



# **Faculty/Staff Data 2010-2011**



Full-Time Employees By Gender and Racial/Ethnic Category  
Fall 2001 through Fall 2010

Gender	2001	2002	2003	2004	2005	2006	2007	2008	2009	2010
Men	470	461	454	460	461	461	471	461	476	483
Women	402	413	415	421	422	442	461	471	482	474
Total	872	874	869	881	883	903	932	932	958	957

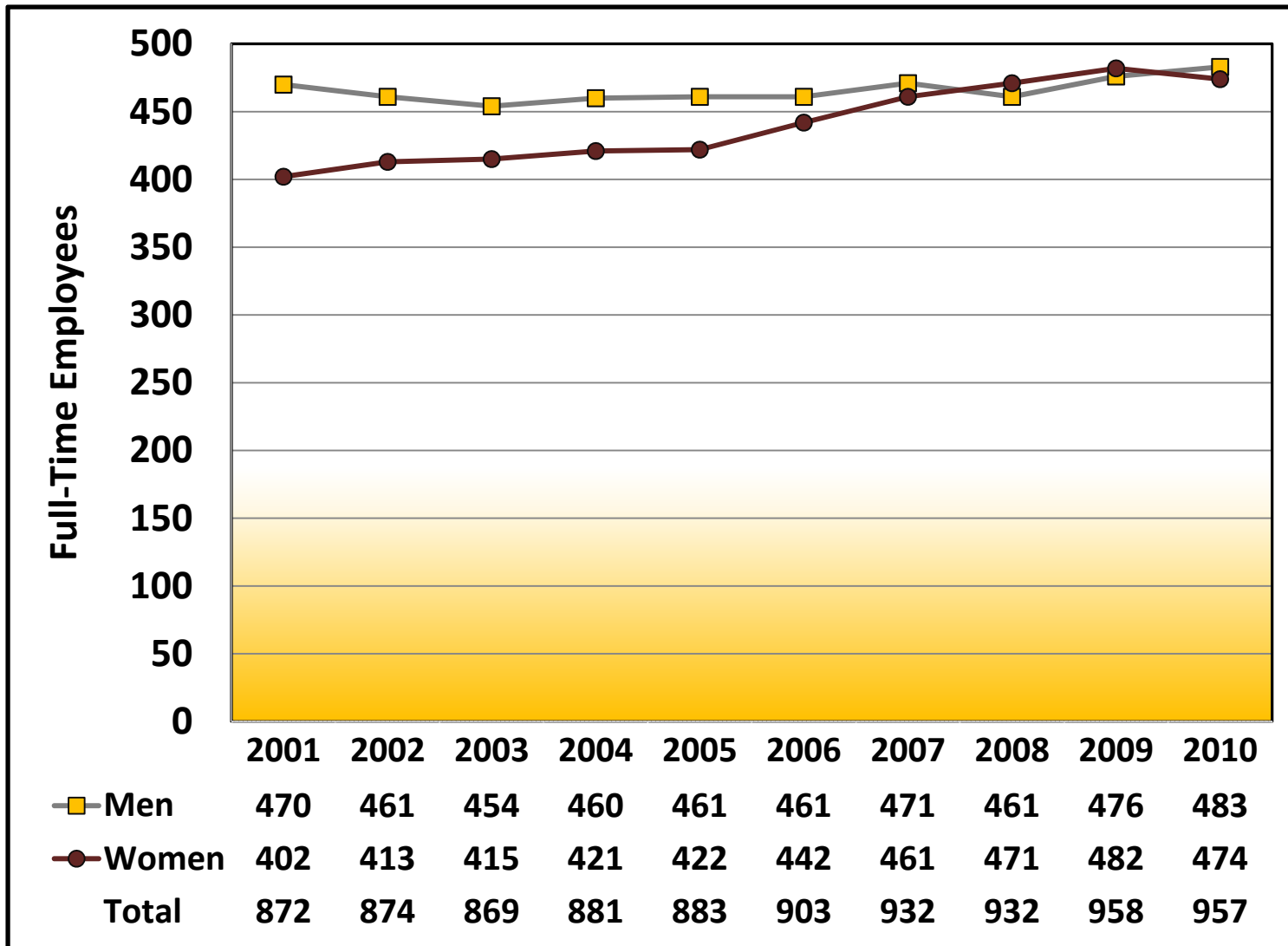
Racial/Ethnic Category	2001	2002	2003	2004	2005	2006	2007	2008	2009	2010
Black, non-Hispanic	30	30	32	28	32	33	40	33	38	36
Asian or Pacific Islander	27	29	32	30	31	32	33	36	30	32
Hispanic	10	10	11	10	11	11	11	11	12	10
American Indian/Alaska Native	2	1	0	0	1	2	3	4	3	2
Multi-Racial									2	4
White, non-Hispanic	803	804	794	813	808	825	845	848	851	849
Non-Resident Alien									12	10
Unknown									10	14
Total	872	874	869	881	883	903	932	932	958	957



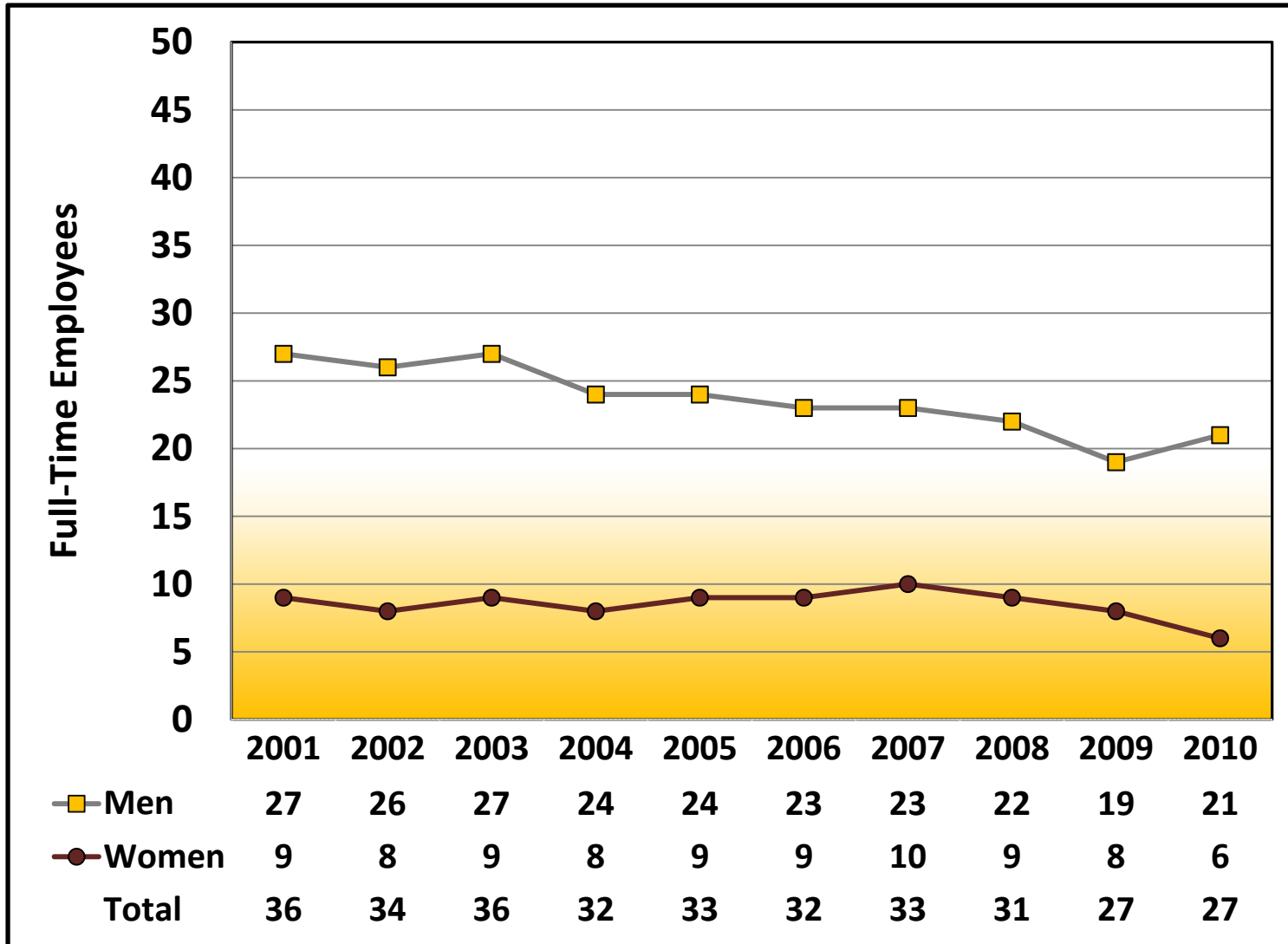
**Full-Time Employees By EEO Category  
Fall 2000 through Fall 2010**

<b>EEO Category</b>	<b>2001</b>	<b>2002</b>	<b>2003</b>	<b>2004</b>	<b>2005</b>	<b>2006</b>	<b>2007</b>	<b>2008</b>	<b>2009</b>	<b>2010</b>
Exec/adm/mgr	36	34	36	32	33	32	33	31	27	27
Faculty	386	377	378	379	383	395	408	408	429	433
Other Professional	119	123	128	130	125	126	141	146	150	157
Technical/ Paraprofessional	32	32	27	27	27	28	25	27	25	24
Clerical/Secretarial	125	134	135	142	142	149	149	152	153	142
Skilled Crafts	53	53	49	51	53	53	48	47	50	47
Service/Maintenance	121	121	116	120	120	120	128	121	124	127
<b>Total</b>	<b>872</b>	<b>874</b>	<b>869</b>	<b>881</b>	<b>883</b>	<b>903</b>	<b>932</b>	<b>932</b>	<b>958</b>	<b>957</b>

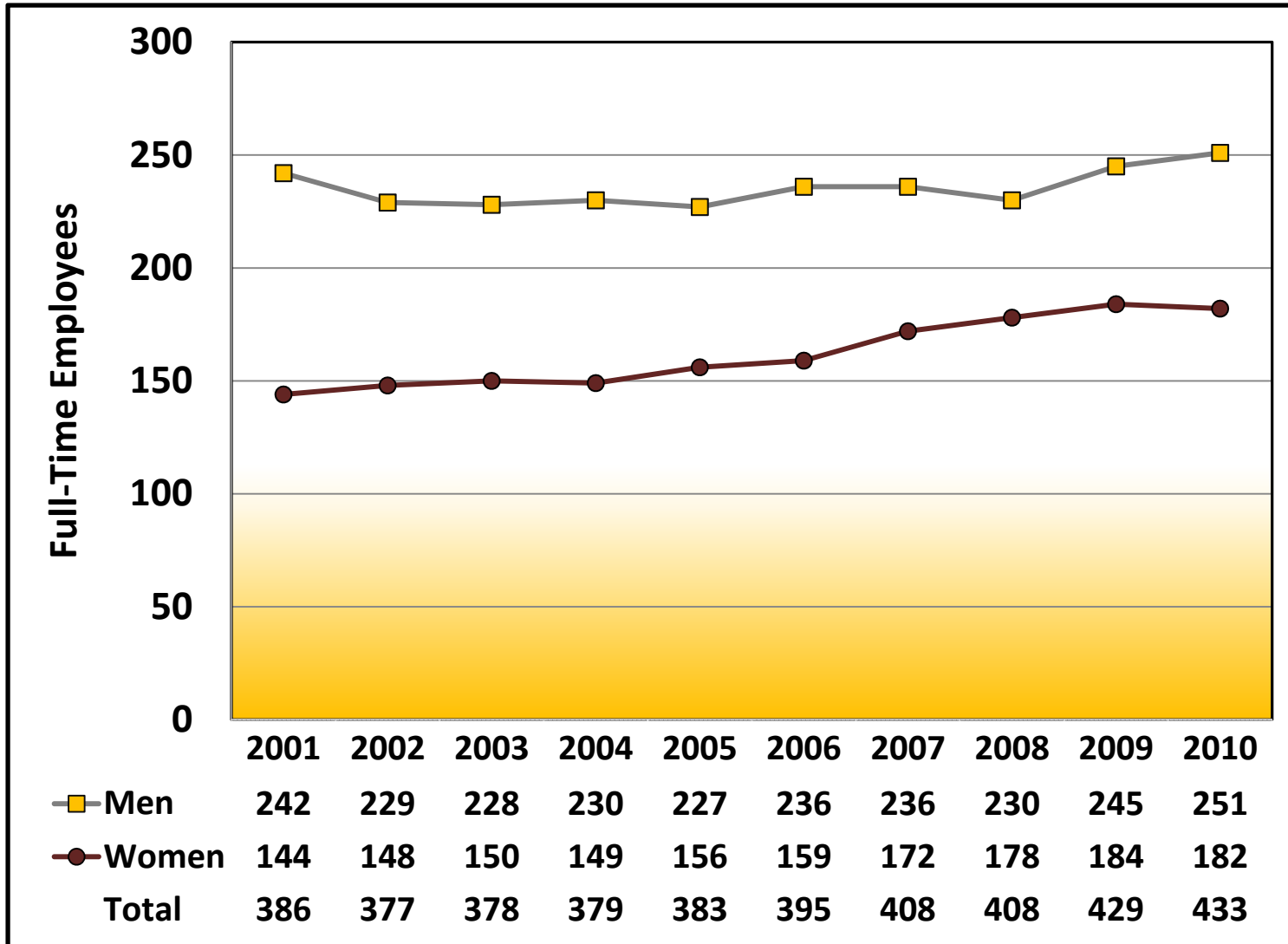
**Full-Time Employees By Gender**  
**Fall 2001 through Fall 2010**



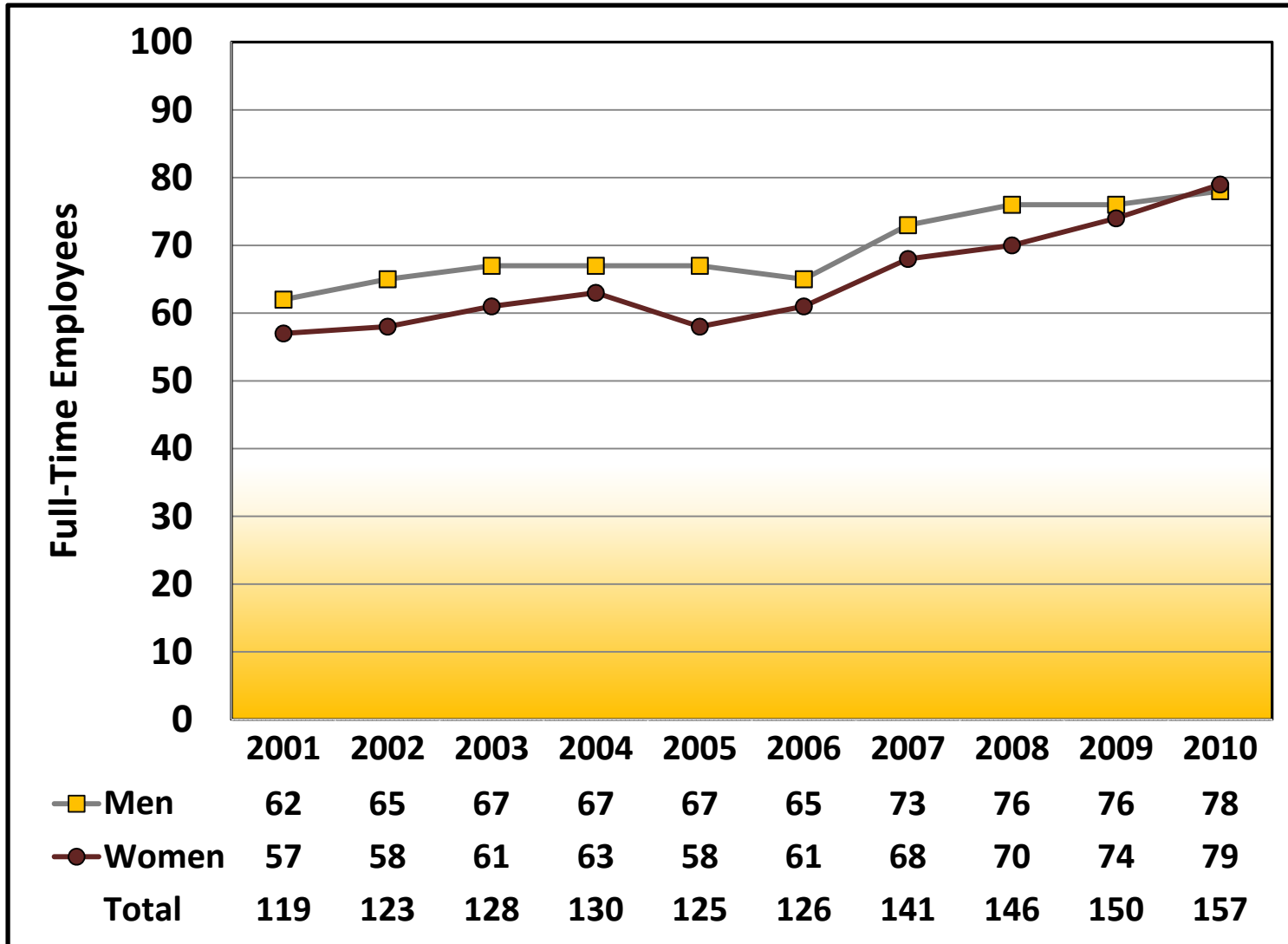
Full-Time Executive/Administrative/Managerial Employees By Gender  
Fall 2001 through Fall 2010



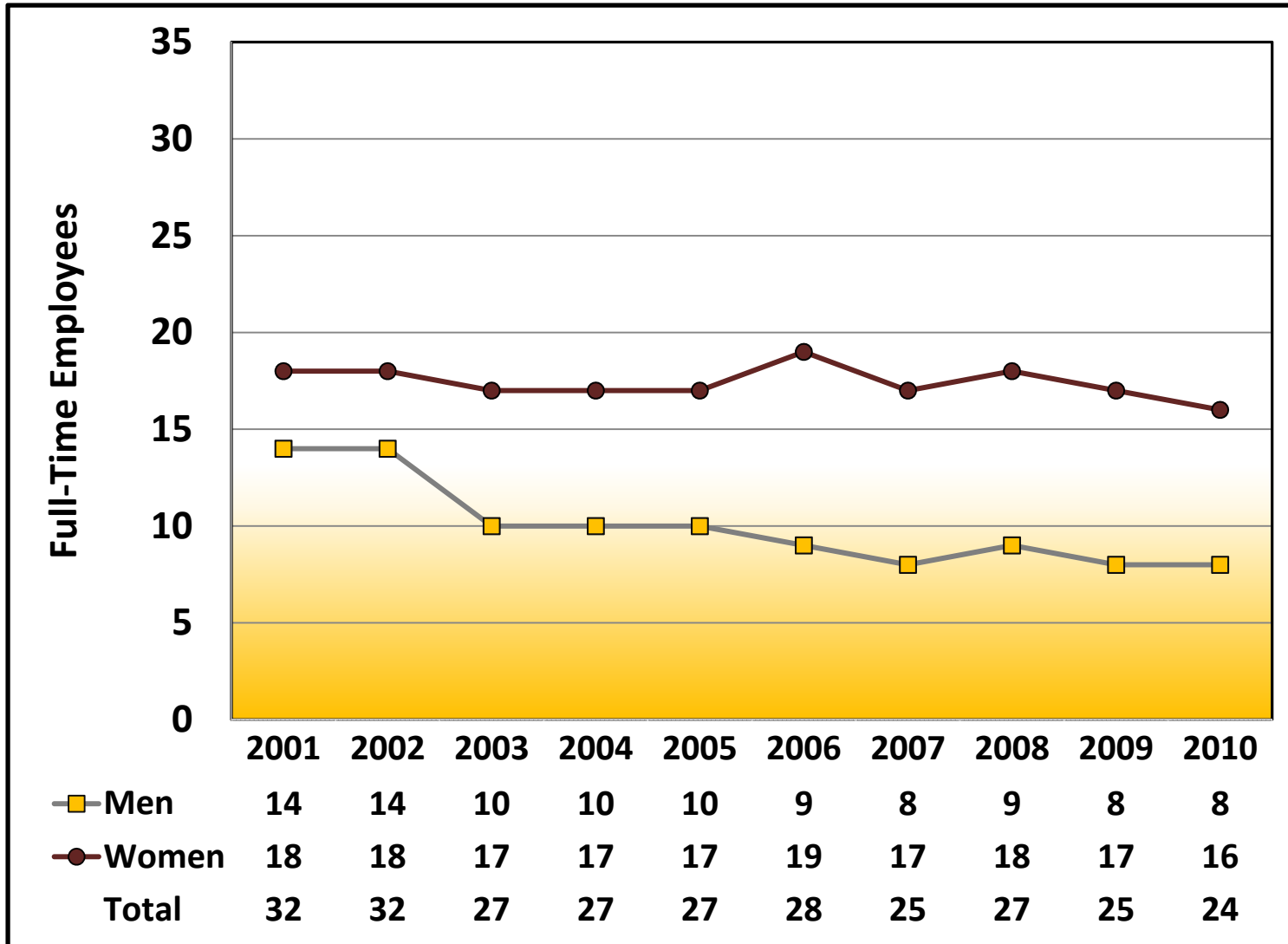
Full-Time Faculty By Gender  
Fall 2001 through Fall 2010



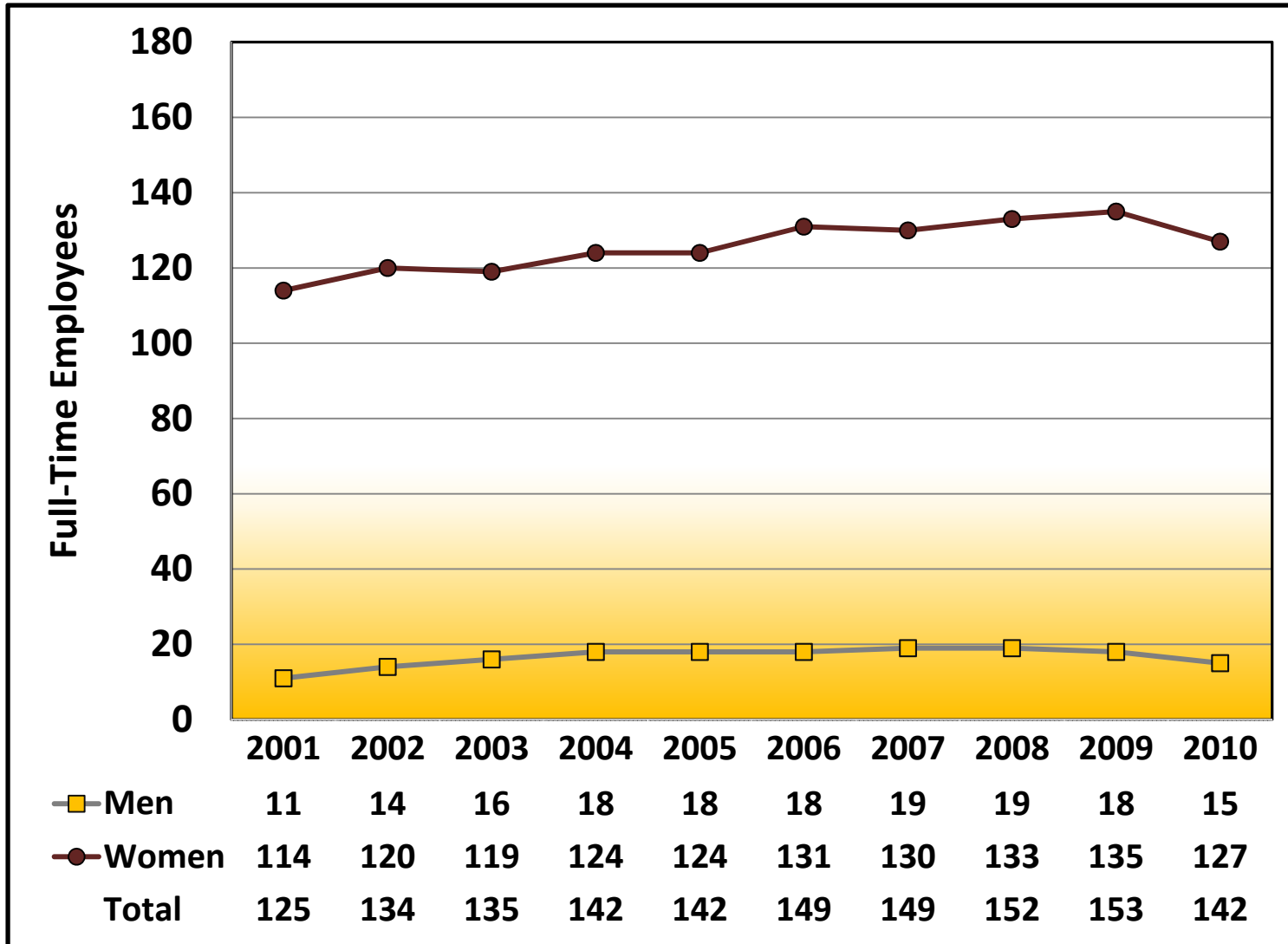
Full-Time Other Professional Employees By Gender  
Fall 2001 through Fall 2010



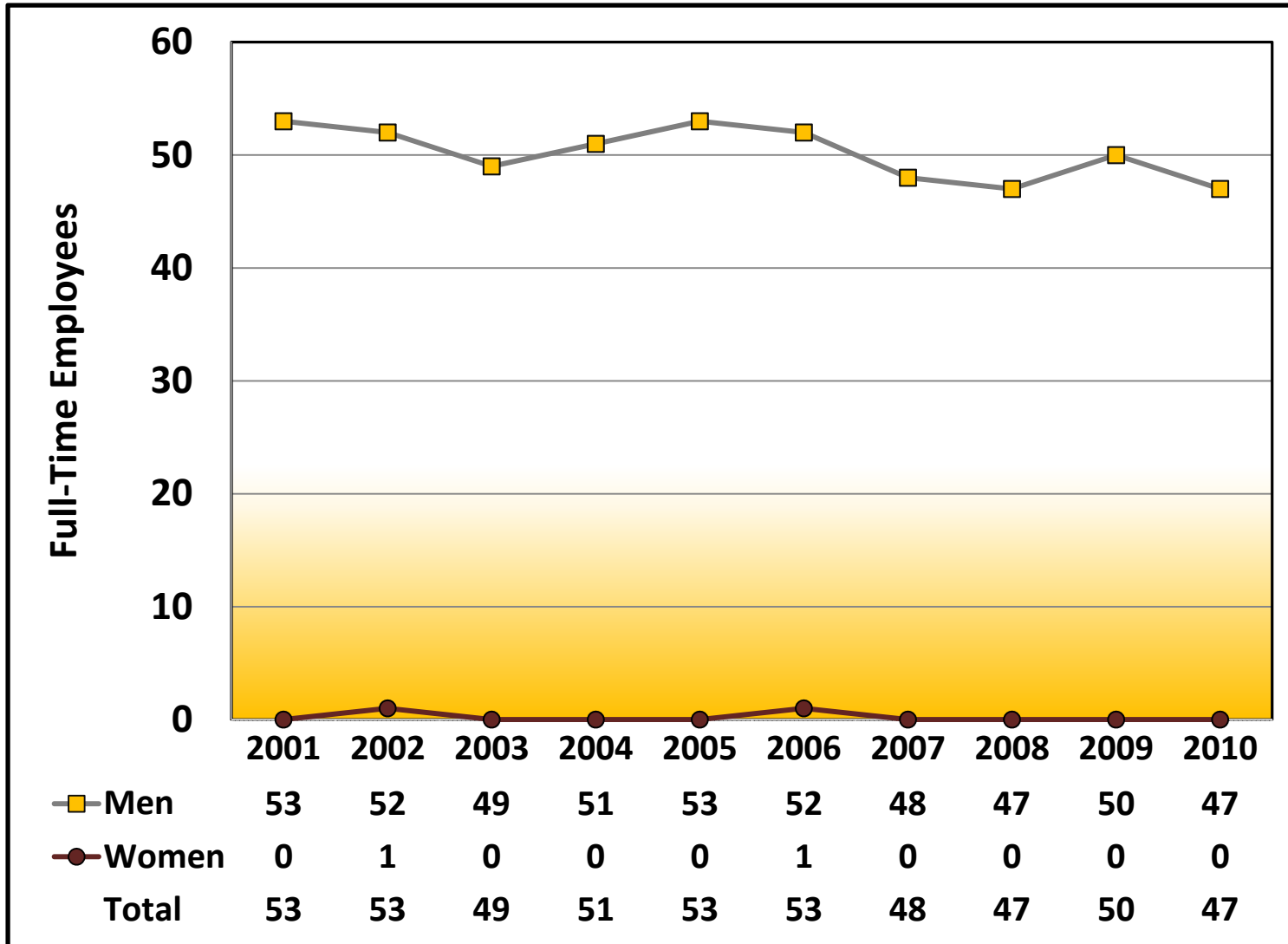
Full-Time Other Technical/Paraprofessional Employees By Gender  
Fall 2001 through Fall 2010



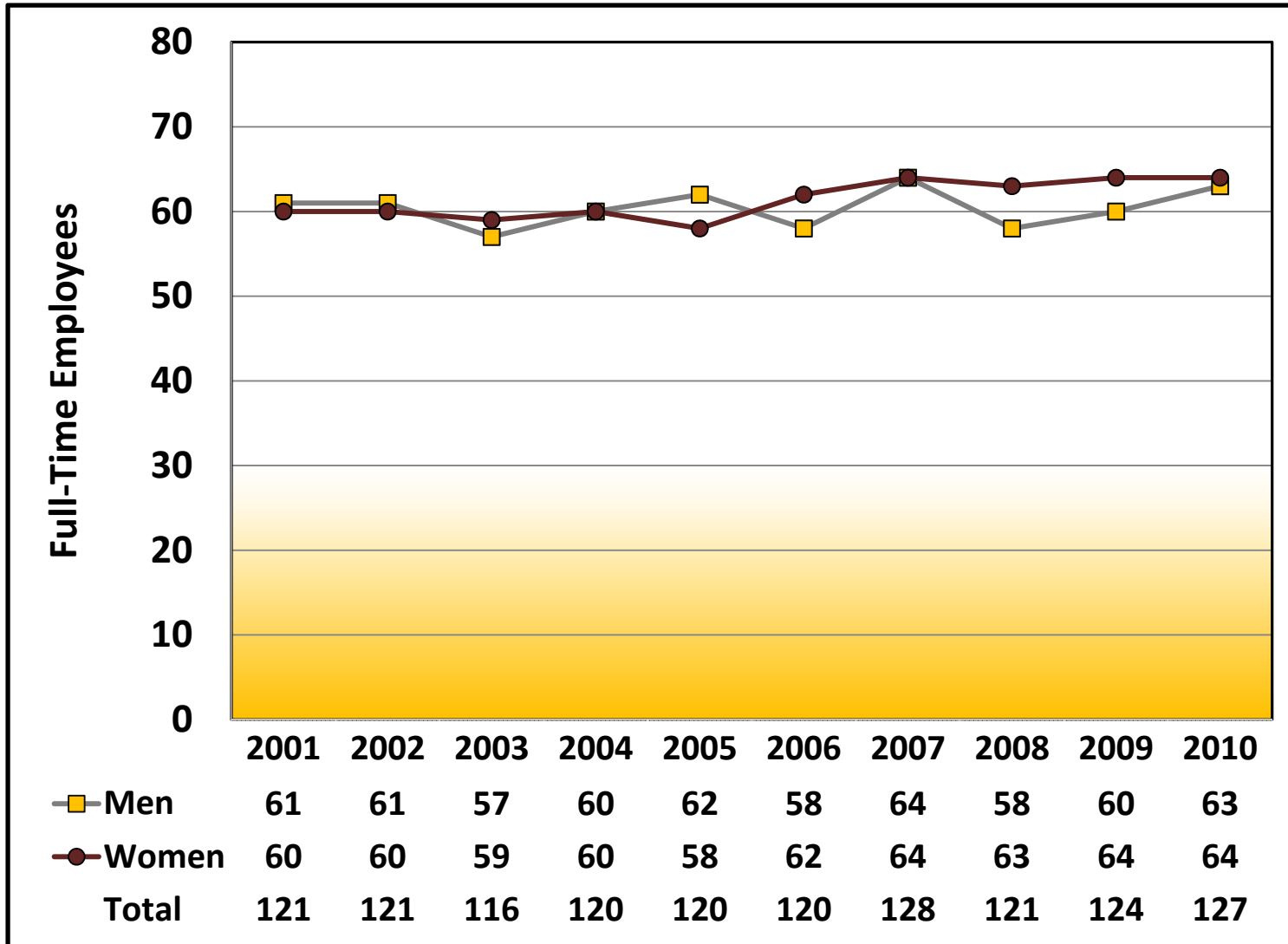
**Full-Time Other Clerical/Secretarial Employees By Gender**  
 Fall 2001 through Fall 2010



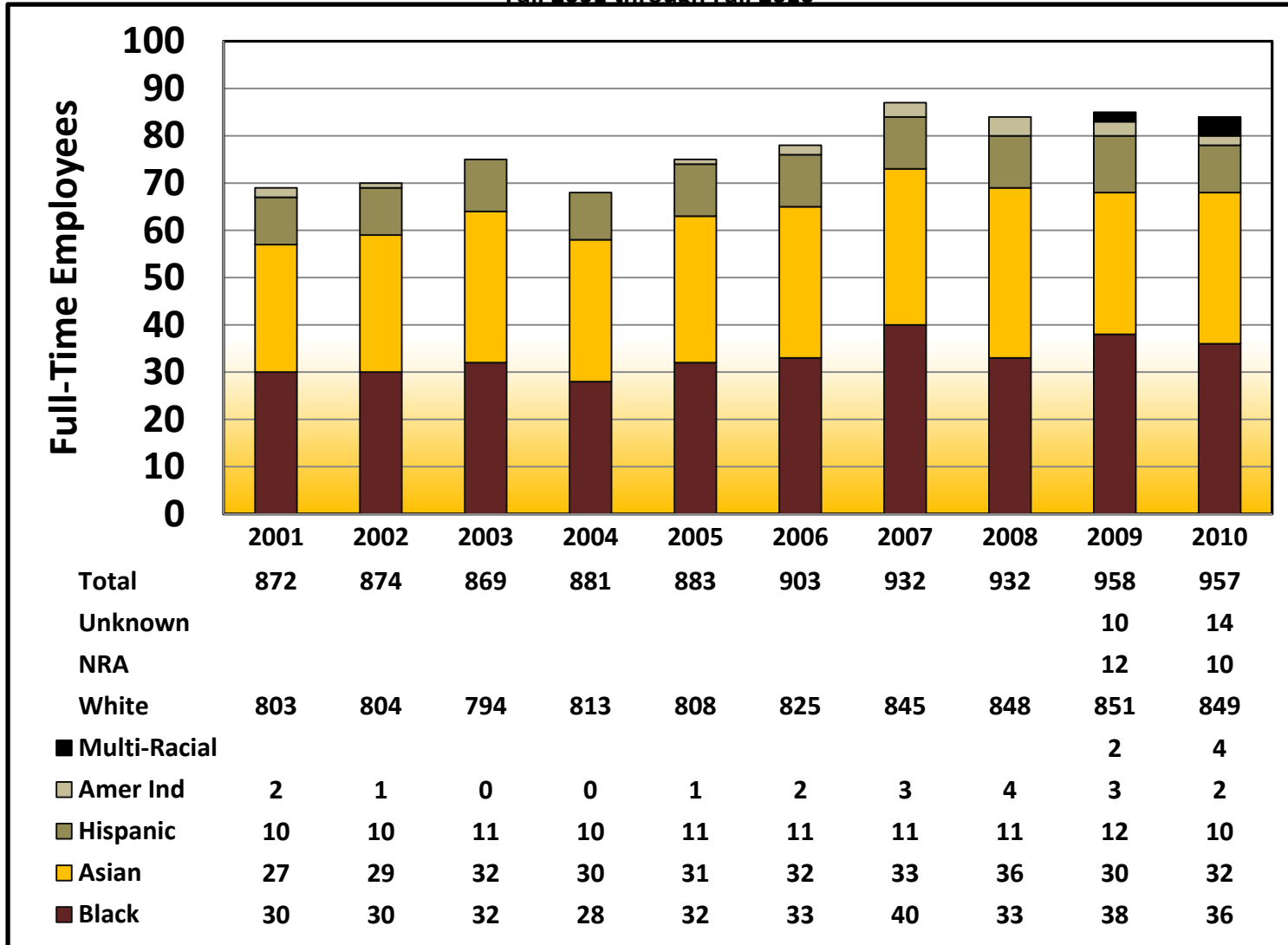
**Full-Time Other Skilled Crafts Employees By Gender**  
**Fall 2001 through Fall 2010**



Full-Time Other Service/Maintenance Employees By Gender  
Fall 2001 through Fall 2010

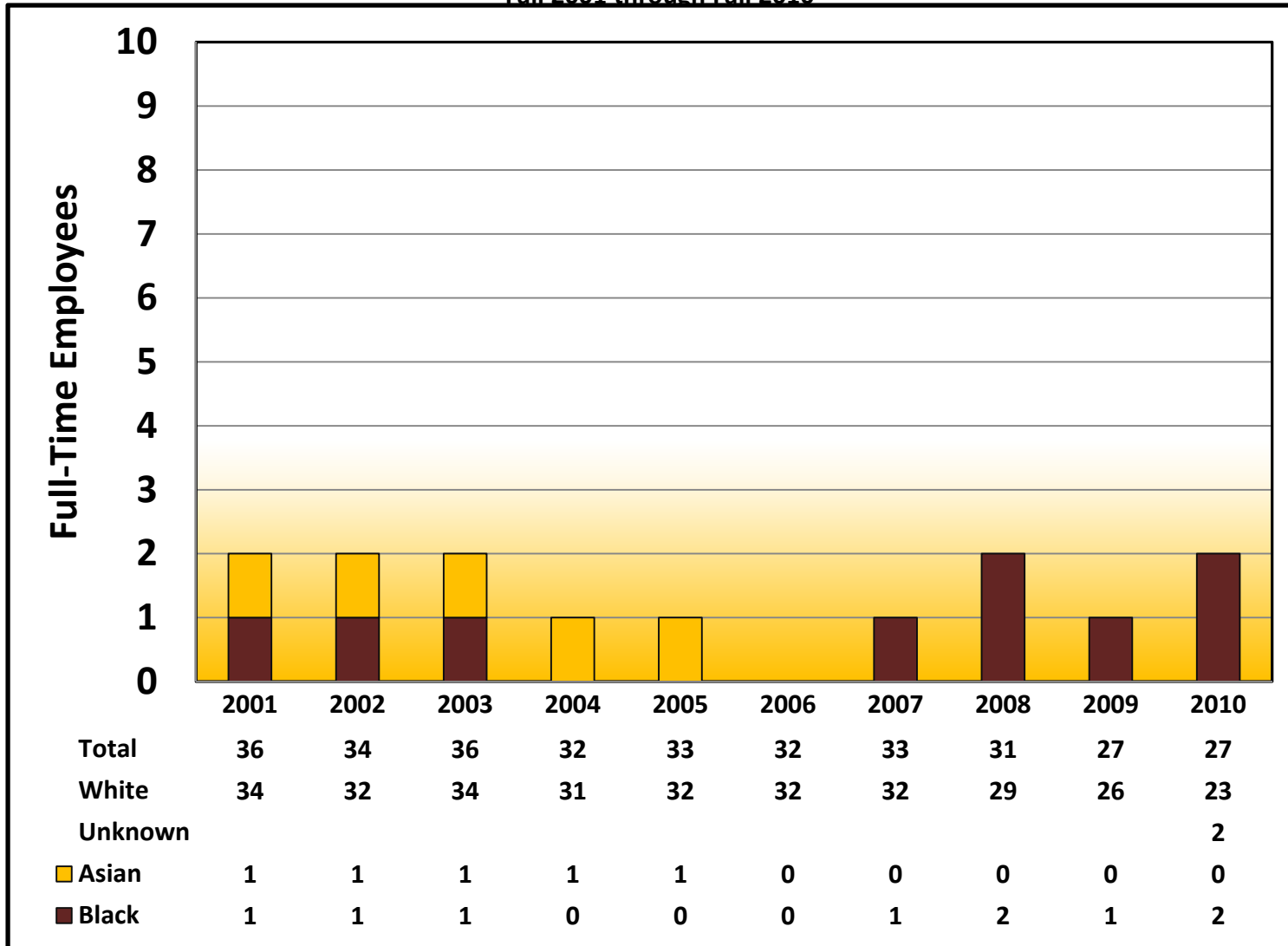


**Full-Time Employees By Racial Category  
Fall 2001 through Fall 2010**

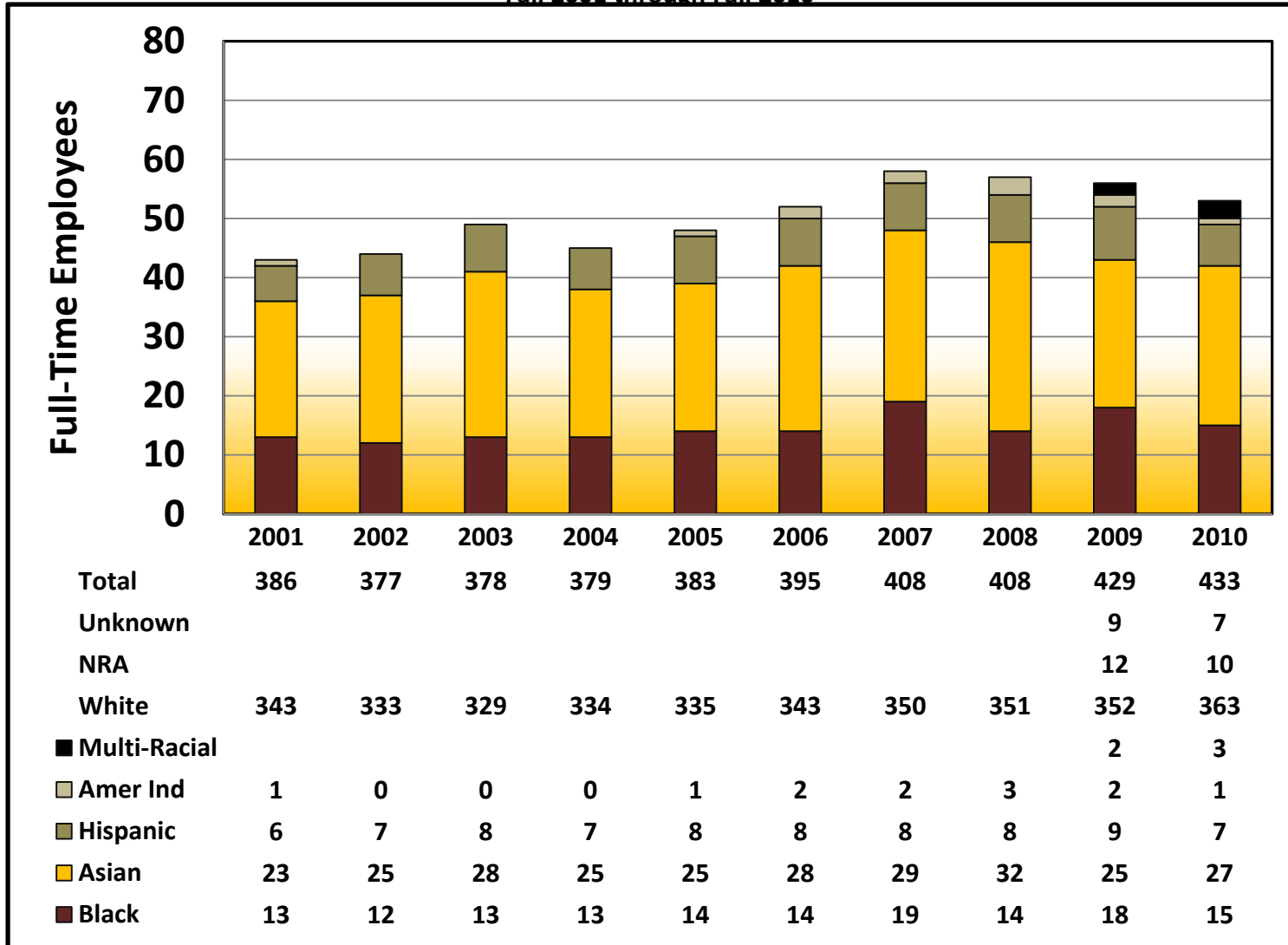




Full-Time Executive/Administrative/Managerial Employees By Racial Category  
Fall 2001 through Fall 2010

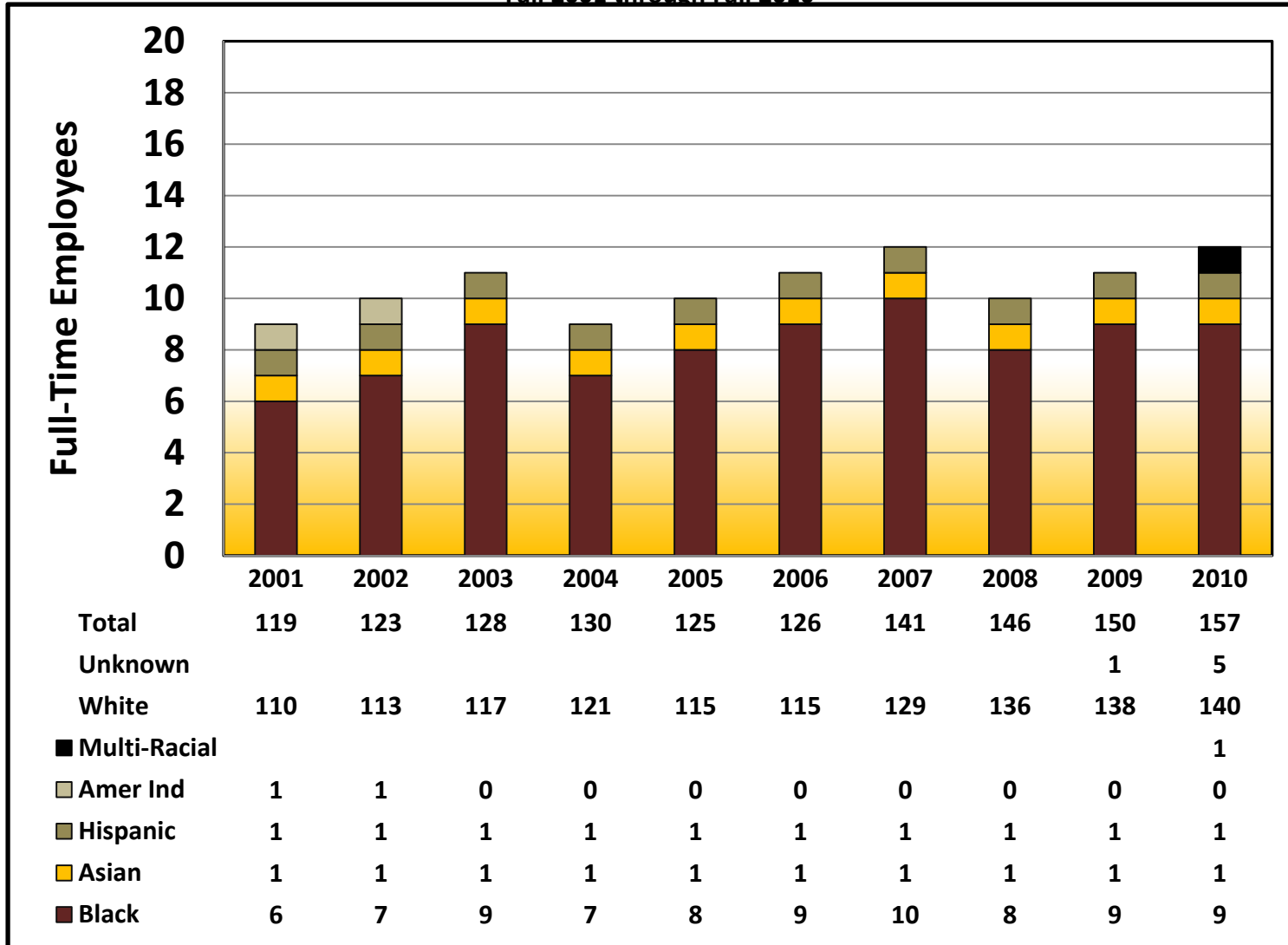


Full-Time Faculty By Racial Category  
Fall 2001 through Fall 2010



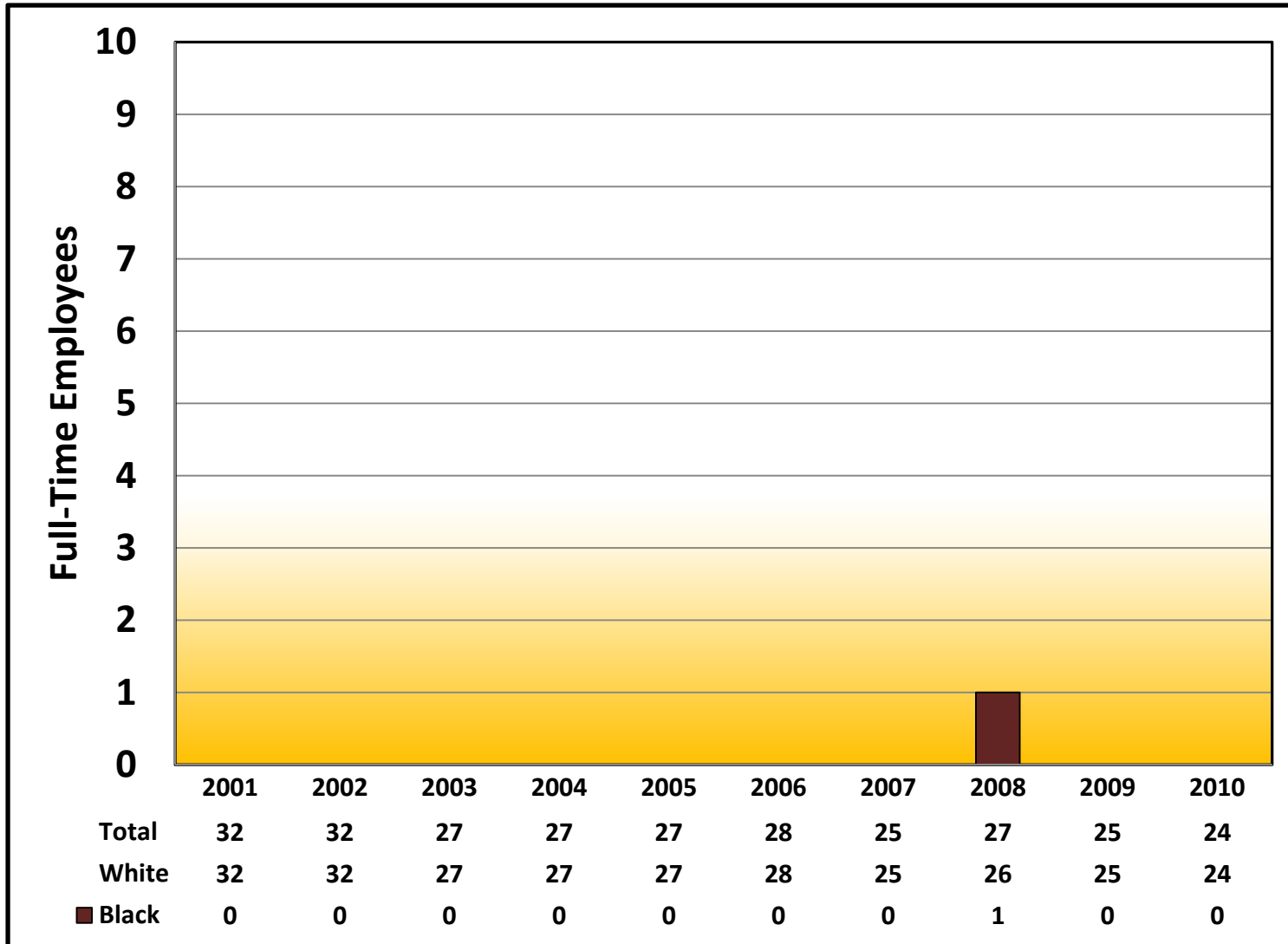


Full-Time Other Professional Employees By Racial Category  
Fall 2001 through Fall 2010

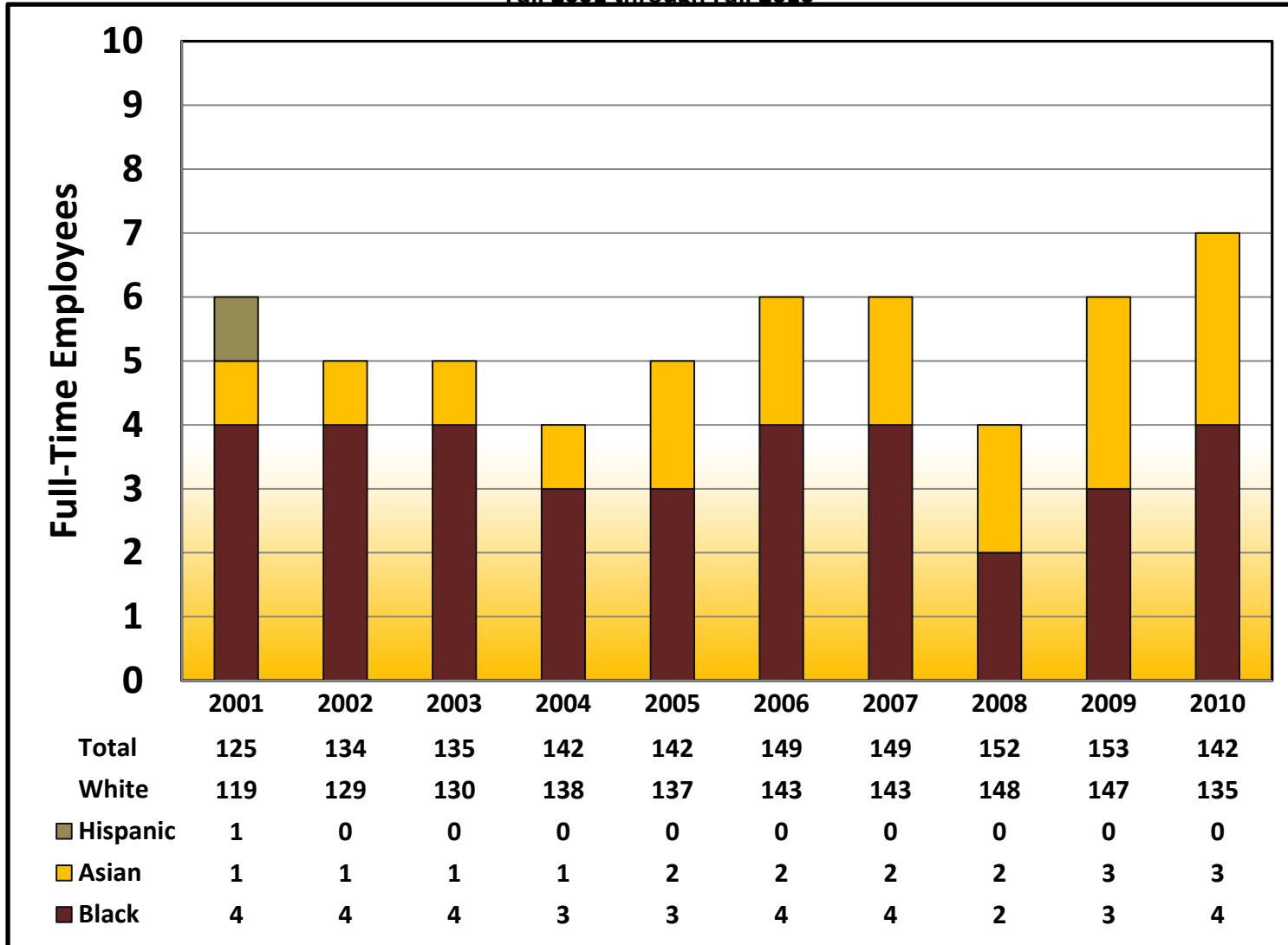




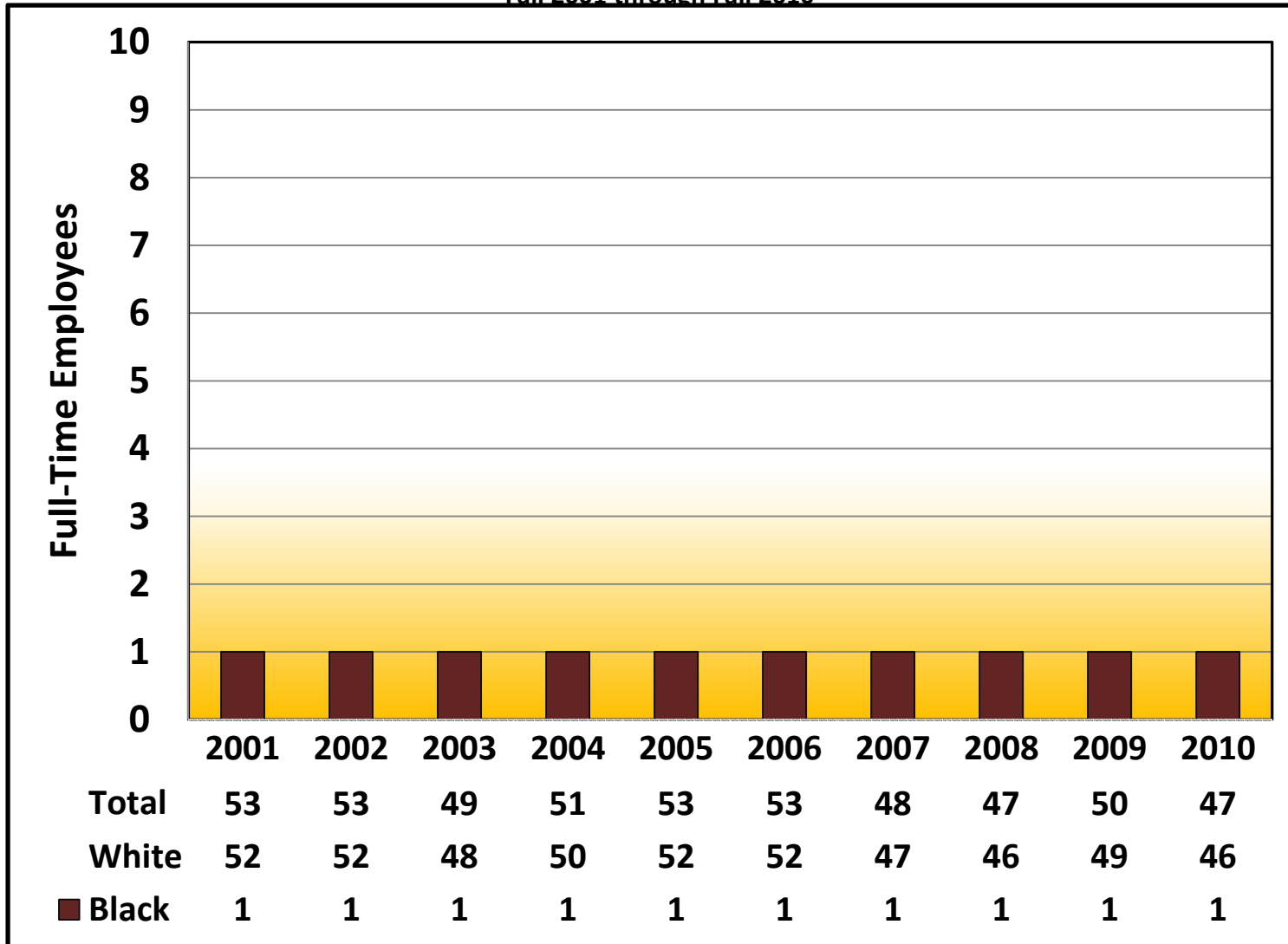
### Full-Time Other Technical/Paraprofessional Employees By Racial Category Fall 2001 through Fall 2010



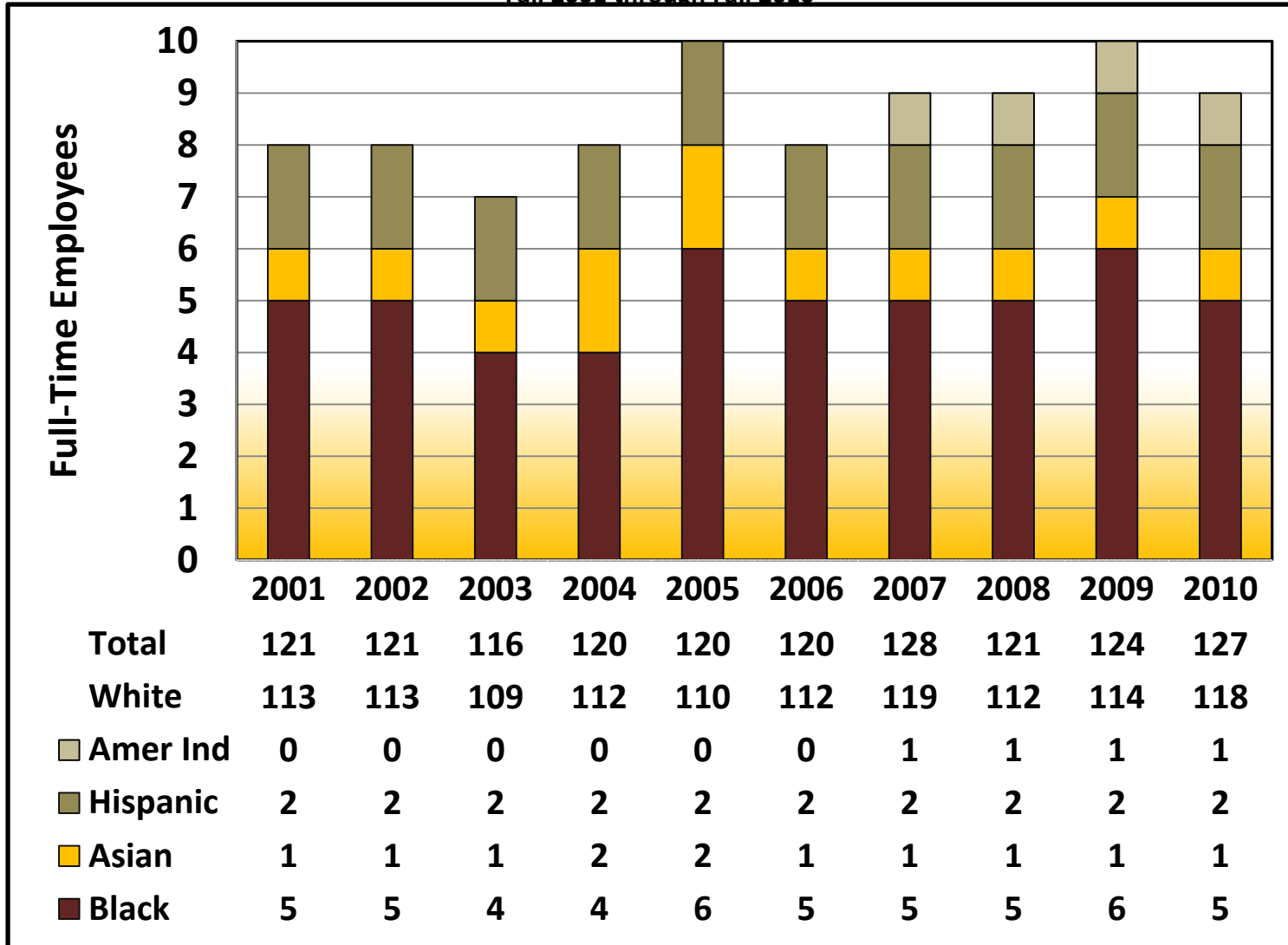
**Full-Time Other Clerical/Secretarial Employees By Racial Category  
Fall 2001 through Fall 2010**



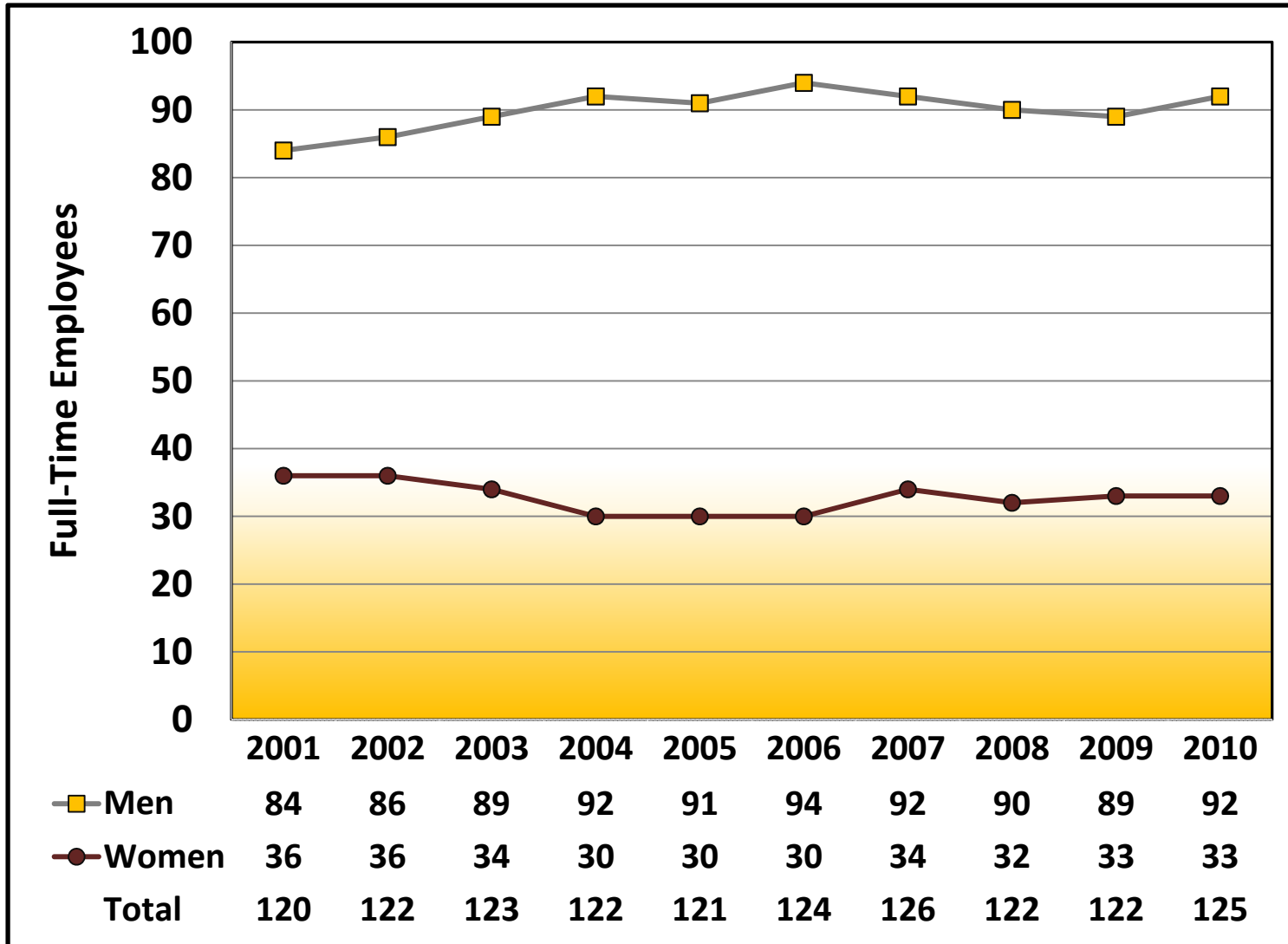
**Full-Time Other Skilled Crafts Employees By Racial Category  
Fall 2001 through Fall 2010**



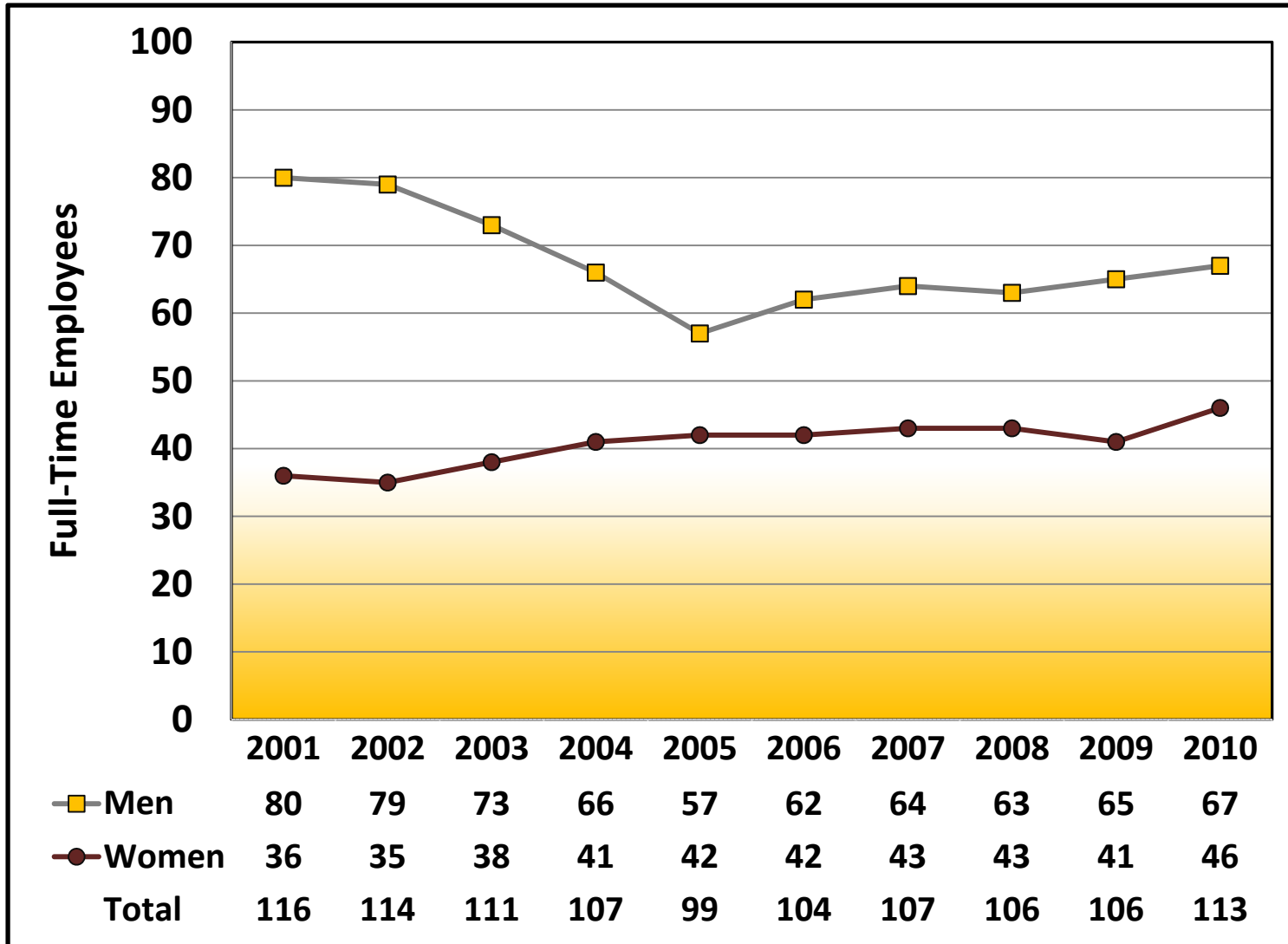
**Full-Time Other Service/Maintenance Employees By Racial Category  
Fall 2001 through Fall 2010**



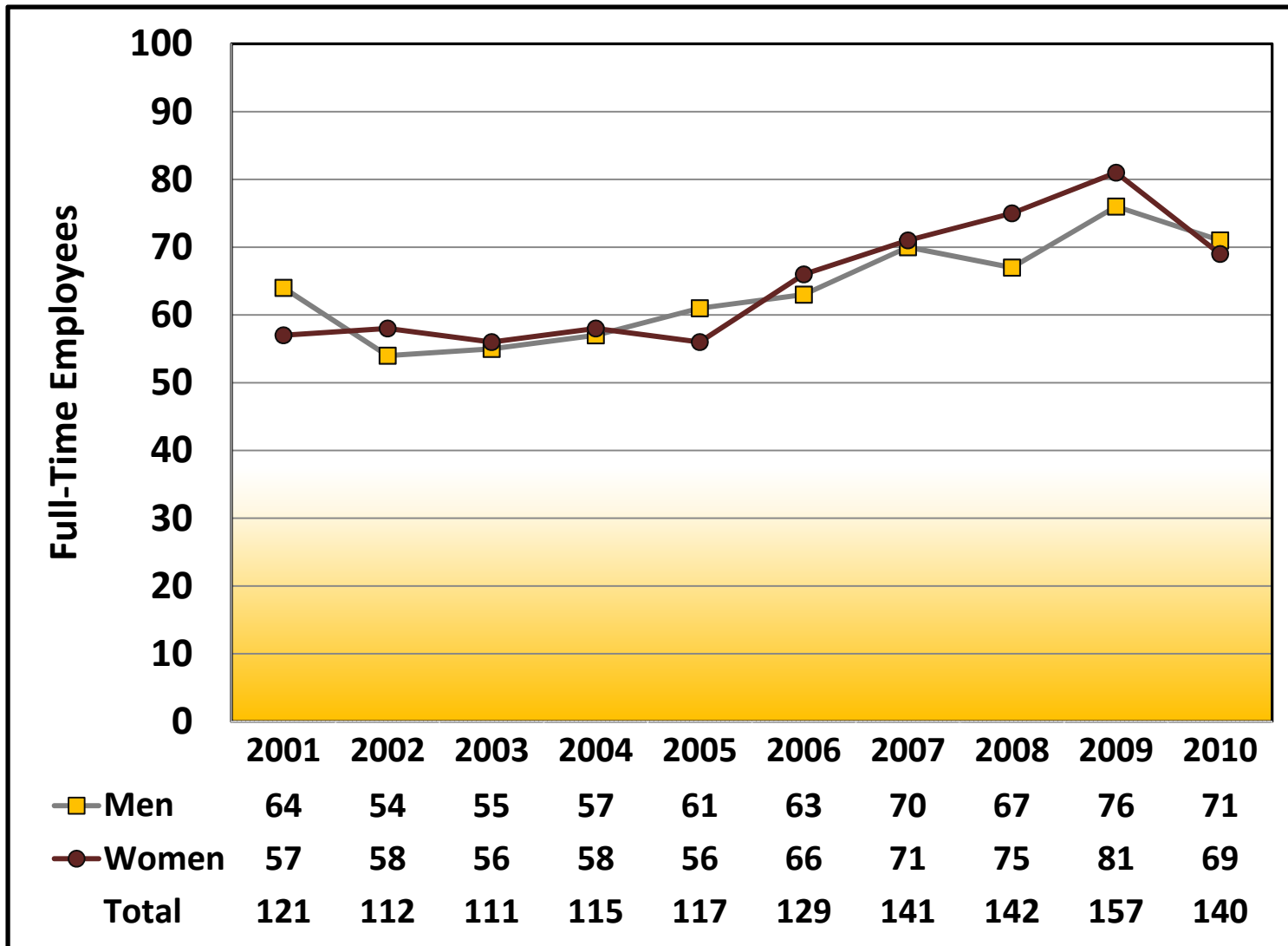
Full-Time Professors By Gender  
Fall 2001 through Fall 2010



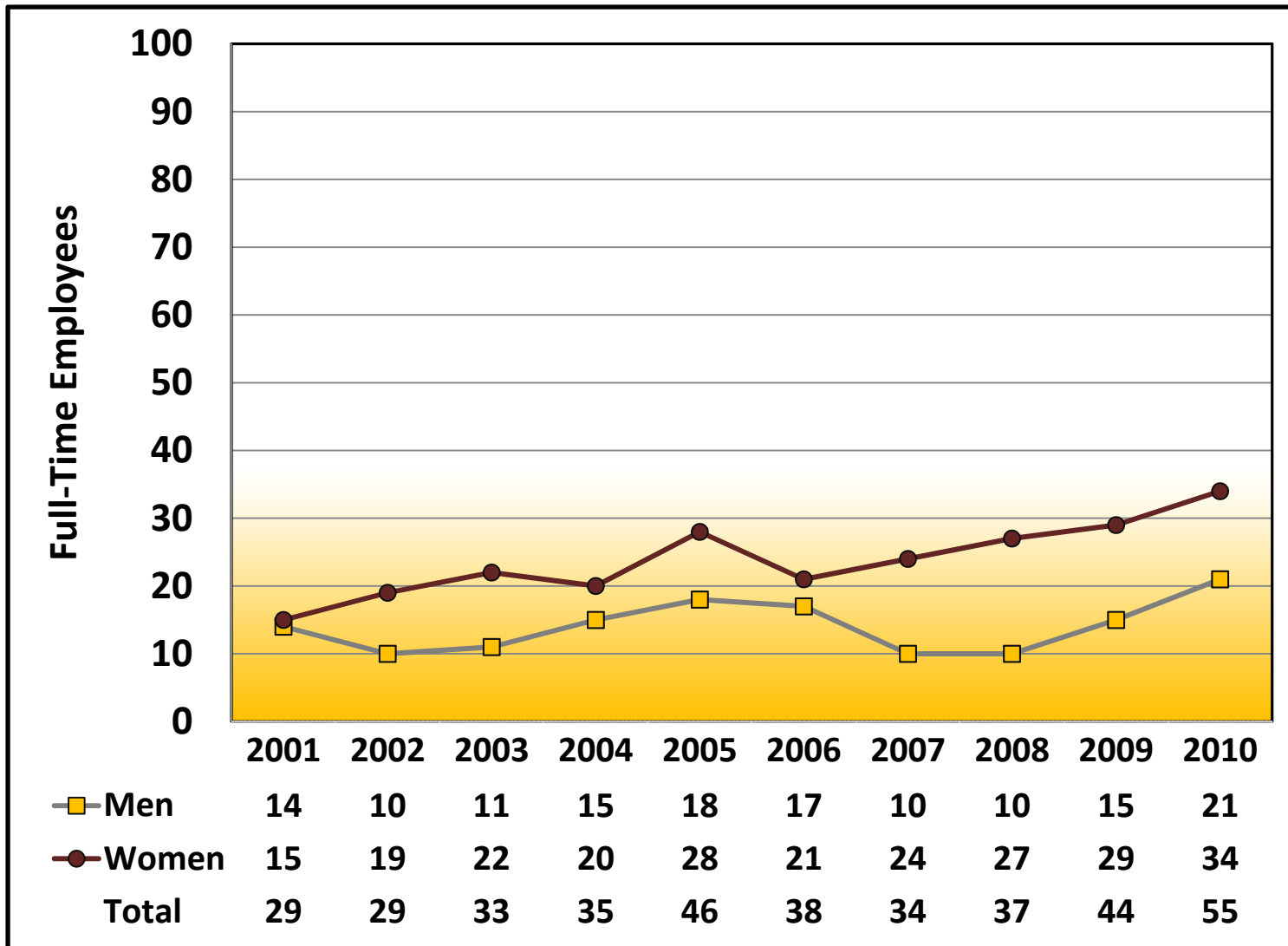
Full-Time Associate Professors By Gender  
Fall 2001 through Fall 2010



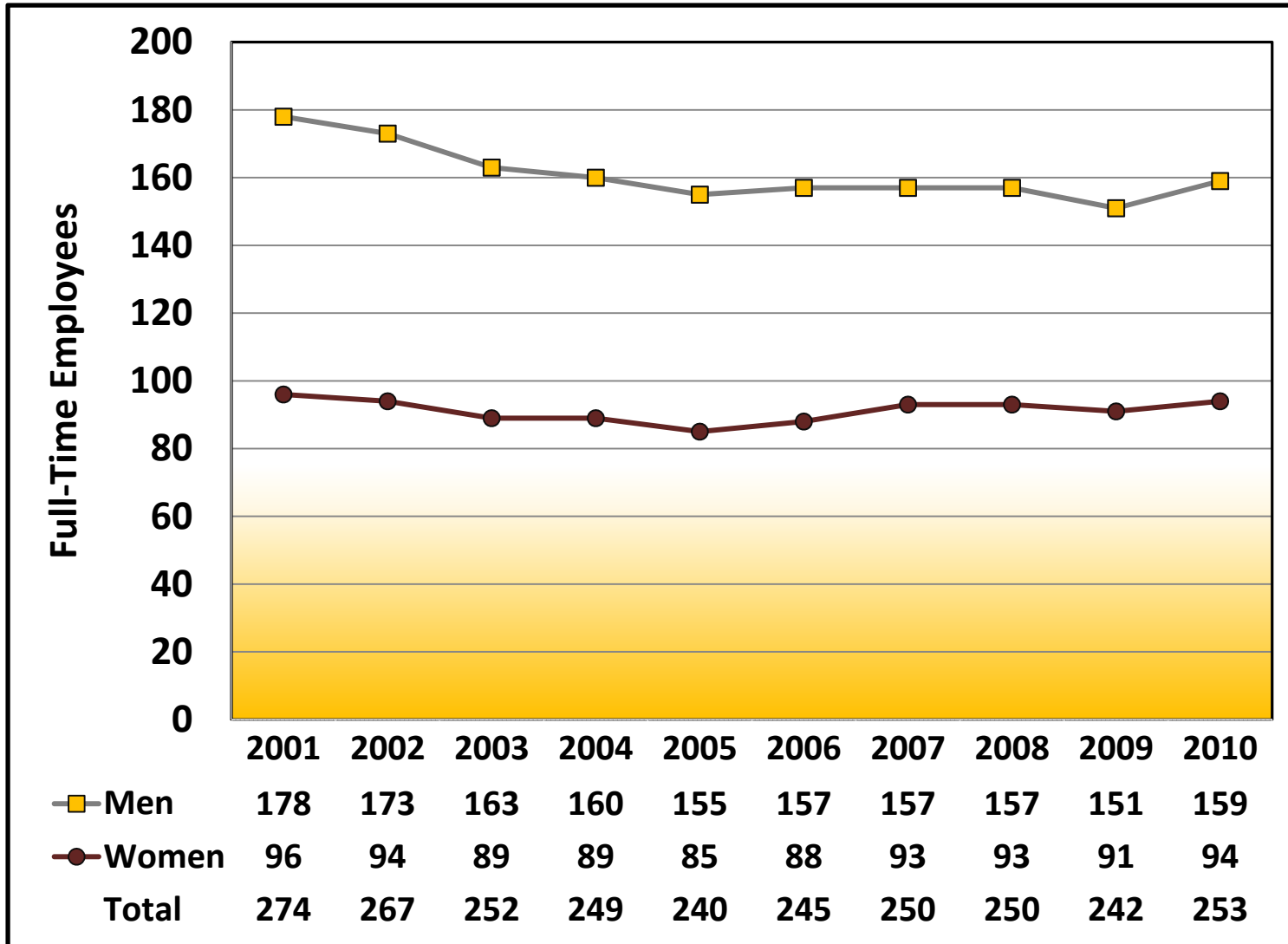
Full-Time Assistant Professors By Gender  
Fall 2001 through Fall 2010



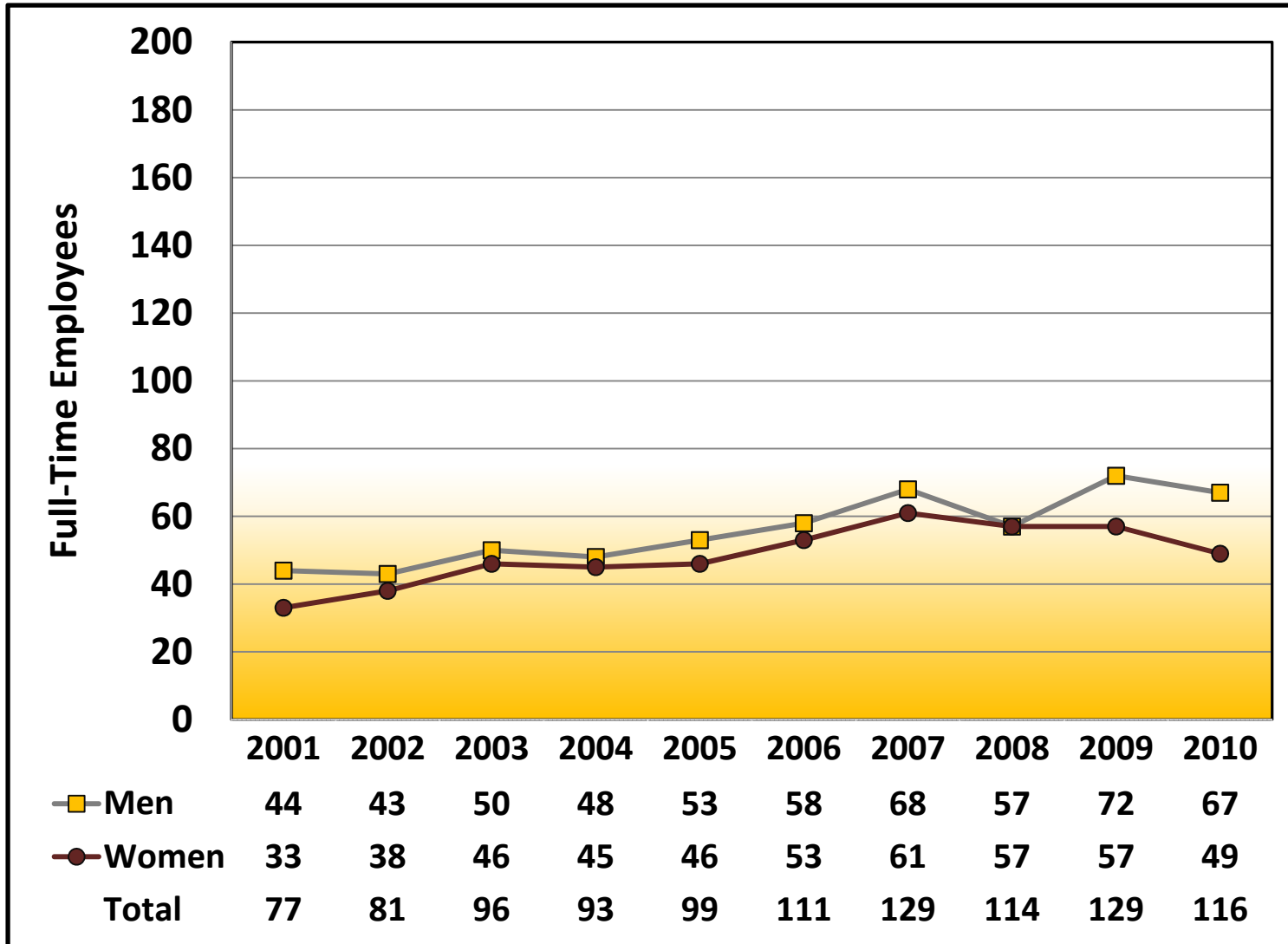
**Full-Time Instructors By Gender**  
**Fall 2001 through Fall 2010**



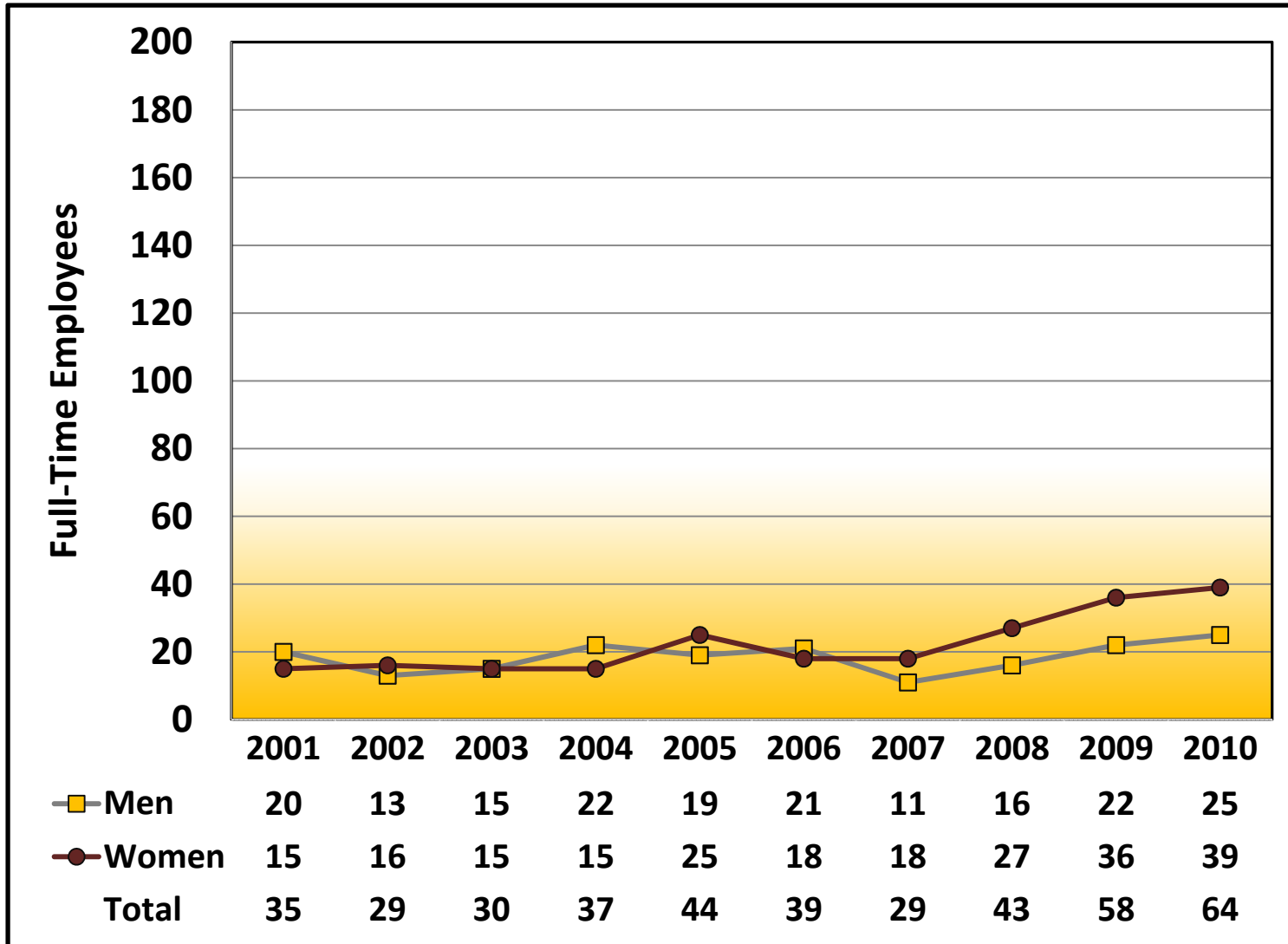
Full-Time Tenured Faculty By Gender  
Fall 2001 through Fall 2010



Full-Time Tenure-Track Faculty By Gender  
Fall 2001 through Fall 2010



Full-Time Not On Tenure-Track Faculty By Gender  
Fall 2001 through Fall 2010





**Full-Time Equivalent (FTE) Faculty and Staff  
Fall 2006 through Fall 2010**

Category	Subcategory	Fall 2006	Fall 2007	Fall 2008	Fall 2009	Fall 2010
<b>FTE Faculty</b>	<b>Permanent</b>	359.00	381.25	370.25	373.00	371.00
	<b>Temporary</b>	58.12	47.03	73.18	91.86	99.90
	<b>Total</b>	<b>417.12</b>	<b>428.28</b>	<b>443.43</b>	<b>464.86</b>	<b>470.90</b>
	<b>Tenured</b>	247.25	252.00	255.00	244.00	255.00
	<b>On-Tenure Track</b>	111.75	129.25	115.25	129.00	116.00
	<b>Not on Tenure-Track</b>	58.12	47.03	73.18	91.86	99.90
	<b>Total</b>	<b>417.12</b>	<b>428.28</b>	<b>443.43</b>	<b>464.86</b>	<b>470.90</b>
<b>FTE Staff - Permanent</b>	<b>Executive</b>	1.00	1.00	1.00	4.00	5.00
	<b>Management</b>	81.00	83.00	79.00	72.00	67.00
	<b>SCUPA</b>	38.10	48.93	47.07	46.88	45.64
	<b>AFSCME</b>	345.88	344.95	351.73	357.23	350.14
	<b>SPFPA</b>	16.31	19.31	18.31	17.80	16.80
	<b>OPEIU</b>	7.00	7.00	8.00	7.00	8.00
	<b>Coaches</b>	20.96	20.96	23.44	22.51	24.51
	<b>Total</b>	<b>510.25</b>	<b>525.15</b>	<b>528.55</b>	<b>527.42</b>	<b>517.09</b>
<b>FTE Staff - Temporary</b>	<b>Management</b>	0.00	0.00	0.00	0.00	1.00
	<b>SCUPA</b>	5.38	3.38	4.88	3.88	5.13
	<b>AFSCME</b>	0.00	0.53	0.00	0.00	0
	<b>SPFPA</b>	0.00	0.00	0.00	0.00	0
	<b>Coaches</b>	0.00	0.31	0.00	0.00	0
	<b>Total</b>	<b>5.38</b>	<b>4.22</b>	<b>4.88</b>	<b>3.88</b>	<b>6.13</b>

FTE data as of October 31 of each year. Includes employees with dual employee assignments. Excludes hourly employees.