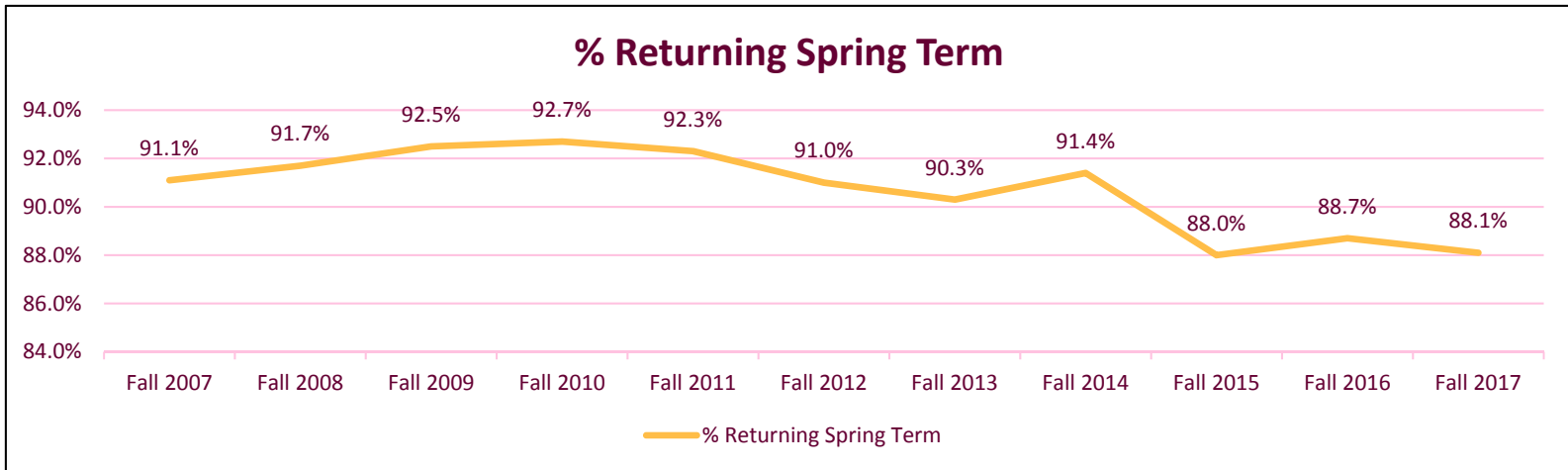


Retention and Graduation Rates

2017-2018



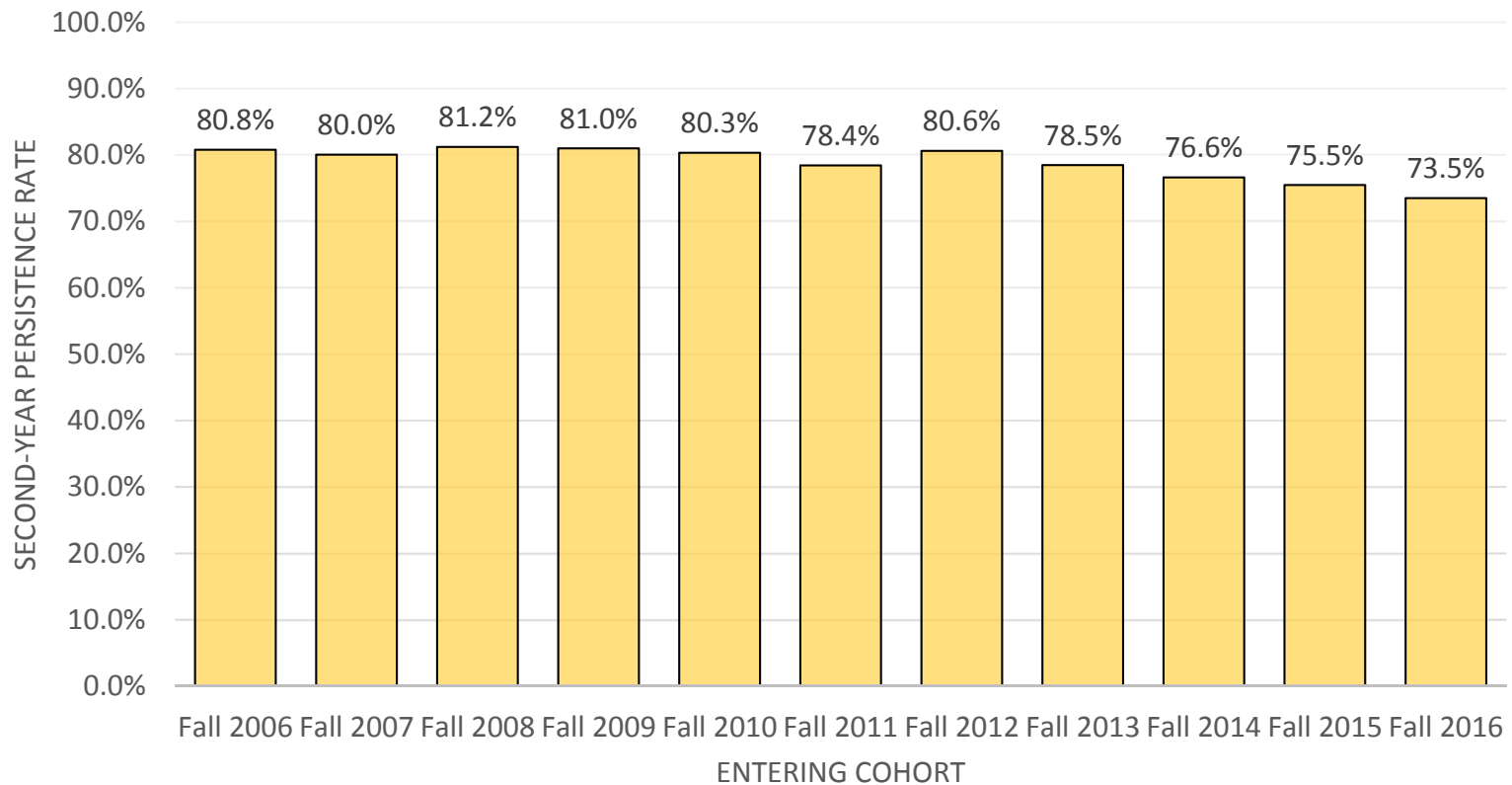
Second Semester Persistence Rates First-Time, Full-Time Freshmen Cohorts Fall 2007 through Fall 2017



Cohort Year	Cohort Size	% Returning Spring Term
Fall 2007	1679	91.1%
Fall 2008	1805	91.7%
Fall 2009	2032	92.5%
Fall 2010	2136	92.7%
Fall 2011	1971	92.3%
Fall 2012	1910	91.0%
Fall 2013	2208	90.3%
Fall 2014	2162	91.4%
Fall 2015	2102	88.0%
Fall 2016	1895	88.7%
Fall 2017	1852	88.1%



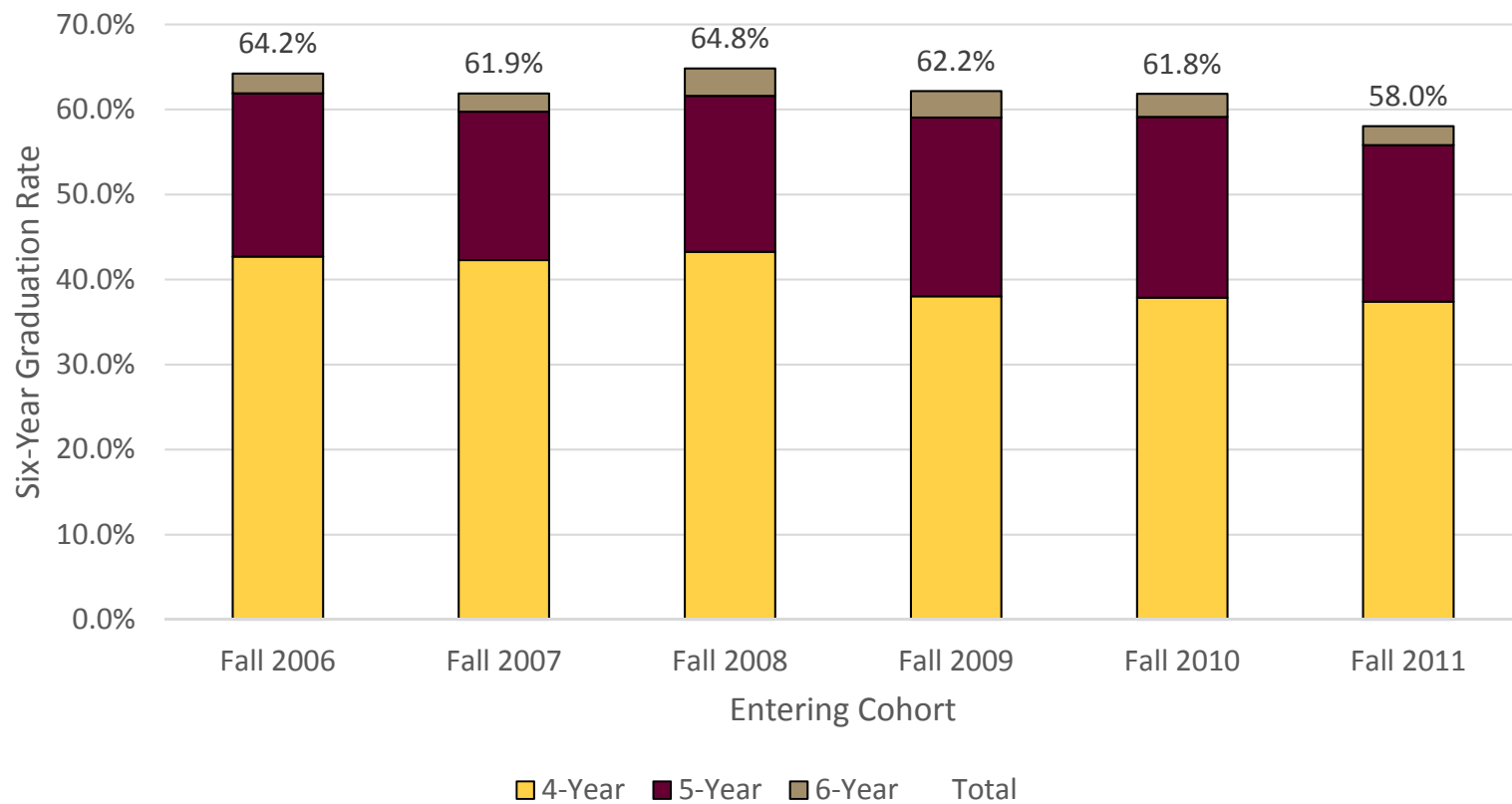
Second-Year Persistence Rates First-Time, Full-Time Freshmen Cohorts Fall 2006 through Fall 2016



Six-Year Graduation Rates

First-Time, Full-Time Freshmen Cohorts

Fall 2006 through Fall 2011



Retention and Graduation Rates

First-Time, Full-Time Freshmen Cohorts

Fall 2006 through Fall 2016

All Freshmen Combined

Cohort Year	Cohort Size	SAT_Avg	Retention			Graduation		Retention		Graduation		Retention
			Year 2	Year 3	Year 4	4 Years	Year 5	5 Years	Year 6	6 Years	Year 7	
Fall 2006	1630	1008	80.80%	70.92%	68.04%	42.70%	23.19%	61.90%	3.31%	64.23%	0.80%	
Fall 2007	1679	1016	80.05%	70.58%	66.83%	42.29%	21.68%	59.74%	3.28%	61.88%	0.95%	
Fall 2008	1805	1021	81.22%	72.47%	68.92%	43.27%	23.93%	61.61%	3.99%	64.82%	0.83%	
Fall 2009	2032	1007	81.00%	70.42%	66.68%	38.04%	26.72%	59.06%	3.79%	62.16%	0.94%	
Fall 2010	2136	1001	80.34%	70.37%	66.39%	37.87%	25.56%	59.13%	3.42%	61.84%	0.75%	
Fall 2011	1971	1003	78.44%	67.02%	63.62%	37.39%	22.78%	55.81%	3.55%	58.04%	1.01%	
Fall 2012	1910	992	80.63%	69.01%	65.71%	37.54%	25.60%	56.60%	4.14%			
Fall 2013	2208	980	78.49%	68.80%	64.90%	40.44%	20.92%					
Fall 2014	2162	975	76.64%	66.84%	63.00%							
Fall 2015	2102	979	75.50%	66.46%								
Fall 2016	1895	974	73.51%									



Retention and Graduation Rates

First-Time, Full-Time Freshmen Cohorts

Fall 2006 through Fall 2016

Fall Freshmen

Cohort Year	Cohort Size	SAT_Avg	Retention			Graduation		Retention		Graduation		Retention
			Year 2	Year 3	Year 4	4 Years	Year 5	5 Years	Year 6	6 Years	Year 7	
New Freshmen												
Fall 2006	1289	1045	81.46%	73.39%	71.14%	48.18%	21.41%	66.95%	2.56%	68.74%	0.54%	
Fall 2007	1347	1049	80.85%	73.13%	70.08%	46.99%	20.71%	64.59%	2.90%	66.44%	0.97%	
Fall 2008	1395	1056	82.51%	75.41%	71.76%	49.25%	21.58%	66.52%	3.23%	69.03%	0.72%	
Fall 2009	1533	1050	82.52%	73.26%	69.93%	44.81%	23.61%	64.58%	2.80%	66.86%	0.72%	
Fall 2010	1613	1043	82.02%	73.53%	70.86%	43.77%	24.67%	65.16%	2.85%	67.64%	0.56%	
Fall 2011	1475	1047	80.75%	71.12%	68.20%	44.14%	21.02%	61.69%	3.19%	64.00%	0.75%	
Fall 2012	1374	1039	82.17%	73.14%	69.72%	44.47%	23.36%	62.81%	3.64%			
Fall 2013	1577	1028	83.01%	74.32%	71.34%	49.71%	18.64%					
Fall 2014	1571	1025	79.89%	71.48%	67.92%							
Fall 2015	1545	1030	79.87%	72.10%								
Fall 2016	1450	1021	76.83%									



Retention and Graduation Rates

First-Time, Full-Time Freshmen Cohorts

Fall 2006 through Fall 2016

Summer Freshmen

Cohort Year	Cohort Size	SAT_Avg	Retention Year 2	Retention Year 3	Retention Year 4	Graduation 4 Years	Retention Year 5	Graduation 5 Years	Retention Year 6	Graduation 6 Years	Retention Year 7
Summer/Fall Freshmen											
Fall 2006	195	938	78.97%	62.05%	55.90%	26.67%	26.67%	47.69%	5.13%	50.77%	2.05%
Fall 2007	204	935	78.92%	61.76%	56.37%	32.35%	21.08%	49.02%	2.94%	51.47%	0.98%
Fall 2008	262	952	77.10%	64.12%	61.07%	29.39%	28.24%	51.53%	4.20%	53.82%	0.76%
Fall 2009	293	930	80.55%	67.58%	61.43%	24.57%	34.81%	52.56%	4.44%	55.97%	1.71%
Fall 2010	344	918	79.07%	66.57%	58.14%	26.74%	26.74%	46.22%	5.81%	50.29%	1.74%
Fall 2011	331	922	74.92%	61.03%	56.50%	22.36%	28.70%	46.22%	4.53%	48.34%	1.81%
Fall 2012	321	924	77.88%	63.24%	59.50%	25.86%	29.28%	49.53%	2.80%		
Fall 2013	408	895	65.20%	54.66%	50.98%	21.08%	24.75%				
Fall 2014	352	876	68.75%	57.39%	54.55%						
Fall 2015	325	871	61.85%	52.31%							
Fall 2016	247	853	65.18%								



Retention and Graduation Rates

First-Time, Full-Time Freshmen Cohorts

Fall 2006 through Fall 2016

Act 101/EOP Freshmen

Cohort Year	Cohort Size	SAT_Avg	Retention Year 2	Retention Year 3	Retention Year 4	Graduation 4 Years	Retention Year 5	Graduation 5 Years	Retention Year 6	Graduation 6 Years	Retention Year 7
Act 101/EOP											
Fall 2006	146	778	77.40%	60.96%	56.85%	15.75%	34.25%	36.30%	7.53%	42.47%	1.37%
Fall 2007	128	793	73.44%	57.81%	49.22%	8.59%	32.81%	25.78%	7.81%	30.47%	0.78%
Fall 2008	148	809	76.35%	59.46%	56.08%	11.49%	38.51%	33.11%	10.81%	44.59%	2.03%
Fall 2009	206	780	70.39%	53.40%	50.00%	6.80%	38.35%	27.18%	10.19%	35.92%	1.46%
Fall 2010	179	788	67.60%	49.16%	41.90%	6.15%	31.28%	29.61%	3.91%	31.84%	0.56%
Fall 2011	165	781	64.85%	42.42%	36.97%	7.27%	26.67%	22.42%	4.85%	24.24%	1.82%
Fall 2012	215	803	74.88%	51.16%	49.30%	10.70%	34.42%	27.44%	9.30%		
Fall 2013	223	799	70.85%	55.61%	44.84%	10.31%	30.04%				
Fall 2014	239	782	66.95%	50.21%	43.10%						
Fall 2015	232	789	65.52%	48.71%							
Fall 2016	198	776	59.60%								



Retention and Graduation Rates

First-Time, Full-Time Freshmen Cohorts

Fall 2006 through Fall 2016

Cohort Year	Cohort Size	SAT_Avg	Retention Year 2	Retention Year 3	Retention Year 4	Graduation 4 Years	Retention Year 5	Graduation 5 Years	Retention Year 6	Graduation 6 Years	Retention Year 7
Male											
Fall 2006	643	1031	80.09%	67.19%	63.76%	34.37%	28.15%	57.08%	4.04%	59.41%	1.71%
Fall 2007	710	1030	80.00%	70.85%	66.48%	33.38%	28.03%	55.07%	5.35%	58.59%	1.41%
Fall 2008	777	1039	79.15%	70.66%	66.15%	33.85%	29.47%	54.83%	6.05%	59.59%	1.42%
Fall 2009	811	1036	80.76%	70.53%	66.83%	31.07%	33.17%	55.49%	5.43%	59.43%	1.73%
Fall 2010	873	1016	78.47%	69.30%	64.15%	28.87%	31.16%	52.81%	5.04%	56.70%	1.15%
Fall 2011	842	1025	76.37%	63.54%	59.50%	29.93%	25.65%	48.46%	5.70%	51.66%	1.19%
Fall 2012	824	1010	80.34%	67.23%	63.35%	30.70%	30.58%	51.70%	5.95%		
Fall 2013	915	996	77.16%	65.25%	60.66%	31.04%	24.26%				
Fall 2014	867	996	74.97%	64.36%	58.48%						
Fall 2015	869	1002	72.38%	61.68%							
Fall 2016	833	988	69.87%								
Female											
Fall 2006	987	994	81.26%	73.35%	70.82%	48.13%	19.96%	65.05%	2.84%	67.38%	0.20%
Fall 2007	969	1005	80.08%	70.38%	67.08%	48.81%	17.03%	63.16%	1.75%	64.29%	0.62%
Fall 2008	1028	1008	82.78%	73.83%	71.01%	50.39%	19.75%	66.73%	2.43%	68.77%	0.39%
Fall 2009	1221	988	81.16%	70.35%	66.58%	42.67%	22.44%	61.43%	2.70%	63.96%	0.41%
Fall 2010	1263	991	81.63%	71.10%	67.93%	44.10%	21.69%	63.50%	2.30%	65.40%	0.48%
Fall 2011	1129	988	79.98%	69.62%	66.70%	42.96%	20.64%	61.29%	1.95%	62.80%	0.89%
Fall 2012	1086	979	80.85%	70.35%	67.50%	42.73%	21.82%	60.31%	2.76%		
Fall 2013	1293	969	79.43%	71.31%	67.90%	47.10%	18.56%				
Fall 2014	1295	961	77.76%	68.49%	66.02%						
Fall 2015	1233	964	77.70%	69.83%							
Fall 2016	1062	964	76.37%								



Retention and Graduation Rates

First-Time, Full-Time Freshmen Cohorts

Fall 2006 through Fall 2016

Underrepresented Minority (URM) vs Non-URM Freshmen

Cohort Year	Cohort Size	SAT_Avg	Retention			Graduation		Retention			Graduation	
			Year 2	Year 3	Year 4	4 Years	Year 5	5 Years	Year 6	6 Years	Year 7	
URM												
Fall 2006	188	836	77.66%	61.70%	57.98%	21.81%	32.45%	42.55%	6.38%	47.34%	1.06%	
Fall 2007	210	880	77.14%	61.90%	54.29%	20.95%	27.62%	39.05%	4.76%	41.43%	0.95%	
Fall 2008	225	887	76.89%	63.11%	59.56%	21.78%	34.22%	42.22%	8.89%	49.78%	1.33%	
Fall 2009	290	860	73.79%	60.69%	57.93%	15.86%	38.62%	40.00%	8.97%	46.55%	1.72%	
Fall 2010	271	875	72.32%	56.46%	50.92%	14.76%	31.00%	38.38%	4.80%	41.33%	1.11%	
Fall 2011	260	867	68.85%	50.00%	47.69%	15.38%	29.62%	34.23%	5.77%	36.54%	0.77%	
Fall 2012	335	881	77.61%	57.31%	55.82%	17.01%	34.33%	36.42%	6.87%			
Fall 2013	386	888	70.73%	59.84%	51.81%	19.95%	28.24%					
Fall 2014	412	871	68.45%	52.67%	47.09%							
Fall 2015	430	886	66.74%	52.79%								
Fall 2016	413	882	62.47%									
Non-URM												
Fall 2006	1334	1031	81.26%	72.26%	69.49%	45.35%	21.89%	64.02%	2.92%	66.04%	0.82%	
Fall 2007	1323	1036	81.10%	72.64%	69.31%	46.33%	20.71%	63.57%	3.17%	65.61%	0.98%	
Fall 2008	1403	1040	82.11%	74.13%	70.63%	46.54%	22.67%	64.79%	3.42%	67.50%	0.78%	
Fall 2009	1526	1034	82.24%	72.80%	68.94%	42.33%	24.84%	63.04%	2.75%	65.33%	0.92%	
Fall 2010	1783	1021	81.66%	72.80%	69.04%	41.56%	24.96%	62.70%	3.20%	65.40%	0.67%	
Fall 2011	1652	1024	80.08%	70.28%	66.71%	41.34%	21.73%	59.69%	3.27%	61.92%	1.09%	
Fall 2012	1545	1017	81.42%	71.84%	68.16%	41.88%	24.08%	61.10%	3.62%			
Fall 2013	1778	1001	80.15%	70.87%	67.94%	45.22%	19.18%					
Fall 2014	1725	998	78.67%	70.32%	66.90%							
Fall 2015	1642	1003	77.59%	69.98%								
Fall 2016	1463	1000	76.62%									

Chart excludes freshmen of unknown race/ethnicity and non-resident aliens.



Retention and Graduation Rates First-Time, Full-Time Freshmen Cohorts Fall 2006 through Fall 2016

Pell Grant Recipients First-Year vs Non-Pell Grant Recipients

Cohort Year	Cohort Size	SAT_Avg	Retention Year 2	Retention Year 3	Retention Year 4	Graduation 4 Years	Retention Year 5	Graduation 5 Years	Retention Year 6	Graduation 6 Years	Retention Year 7
Pell Recipient											
Fall 2006	407	952	71.99%	59.71%	56.27%	28.01%	25.31%	46.68%	5.16%	50.86%	0.74%
Fall 2007	361	953	72.30%	60.94%	54.02%	30.19%	22.71%	45.71%	4.99%	48.20%	1.66%
Fall 2008	387	961	77.78%	66.67%	64.34%	27.13%	33.33%	49.35%	8.27%	55.81%	1.29%
Fall 2009	639	946	78.87%	64.48%	60.41%	28.64%	29.42%	49.92%	5.63%	53.99%	1.56%
Fall 2010	639	955	76.21%	65.26%	60.88%	28.48%	28.01%	51.49%	3.91%	54.93%	0.63%
Fall 2011	579	956	75.99%	63.21%	58.89%	29.88%	26.08%	48.36%	4.15%	50.95%	1.21%
Fall 2012	607	949	77.10%	61.12%	57.17%	25.37%	28.67%	44.15%	5.77%		
Fall 2013	714	938	77.87%	66.81%	61.06%	30.25%	27.45%				
Fall 2014	770	931	72.99%	59.74%	55.32%						
Fall 2015	686	932	71.43%	59.62%							
Fall 2016	662	927	67.07%								
Non-Pell Recipient											
Fall 2006	1210	1027	84.13%	75.04%	72.31%	47.44%	22.56%	66.86%	2.73%	68.60%	0.83%
Fall 2007	1315	1033	82.13%	73.16%	70.27%	45.70%	21.22%	63.73%	2.74%	65.63%	0.76%
Fall 2008	1414	1037	82.18%	74.12%	70.23%	47.74%	21.36%	64.99%	2.83%	67.33%	0.71%
Fall 2009	1387	1034	82.12%	73.32%	69.72%	42.54%	25.45%	63.37%	2.96%	66.04%	0.65%
Fall 2010	1475	1021	82.31%	72.88%	69.15%	42.31%	24.54%	62.85%	3.19%	65.22%	0.81%
Fall 2011	1364	1024	79.62%	69.28%	66.35%	41.13%	21.48%	59.60%	3.37%	61.73%	0.95%
Fall 2012	1293	1013	82.21%	72.70%	69.68%	43.00%	24.36%	62.34%	3.40%		
Fall 2013	1490	1000	78.72%	69.73%	66.71%	45.30%	17.79%				
Fall 2014	1392	999	78.66%	70.76%	67.24%						
Fall 2015	1409	1002	77.43%	69.91%							
Fall 2016	1229	1000	76.97%								



Chart excludes non-resident aliens.

Retention and Graduation Rates

First-Time, Full-Time Freshmen Cohorts

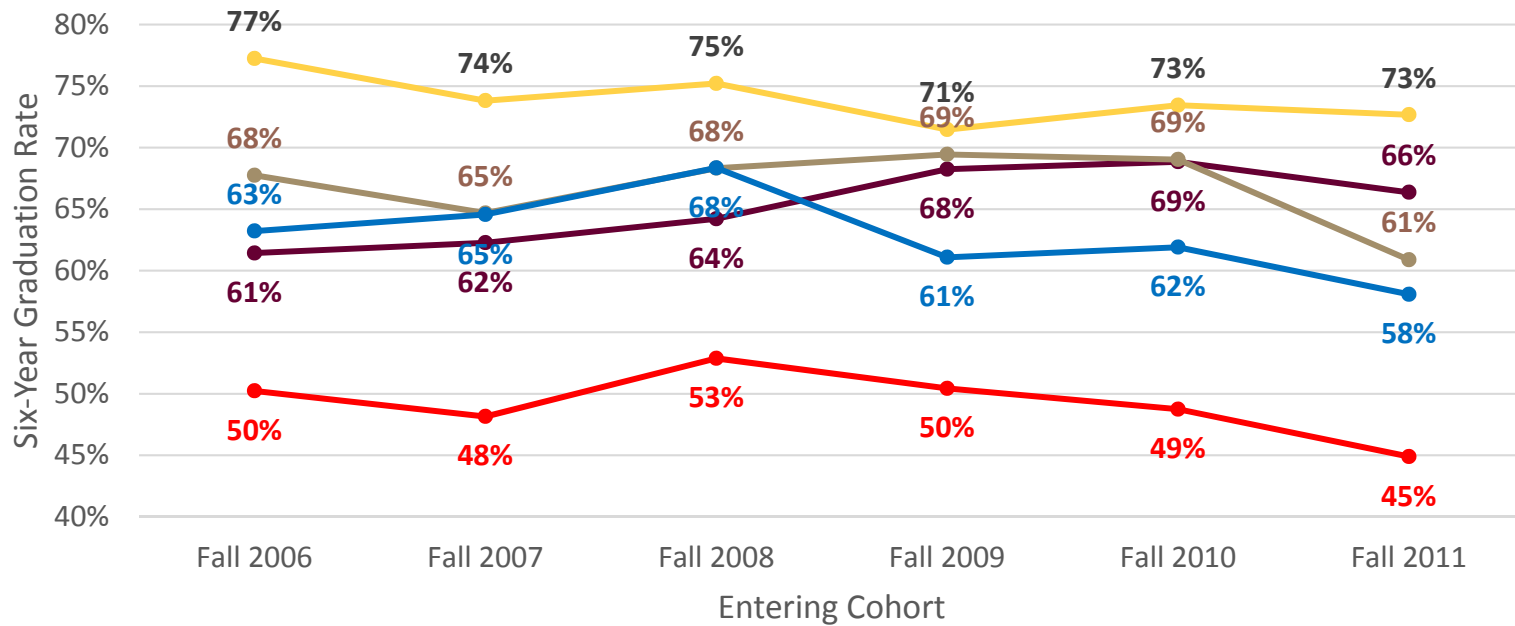
Fall 2006 through Fall 2016

PA Resident vs. Non-Resident

Cohort Year	Cohort Size	SAT_Avg	Retention			Graduation		Retention		Graduation	
			Year 2	Year 3	Year 4	4 Years	Year 5	5 Years	Year 6	6 Years	Year 7
Resident											
Fall 2006	1444	1006	81.44%	71.47%	68.63%	41.48%	24.58%	61.57%	3.67%	64.20%	0.90%
Fall 2007	1467	1017	80.78%	71.10%	67.21%	42.54%	21.81%	60.12%	3.48%	62.24%	1.02%
Fall 2008	1572	1022	80.92%	72.77%	69.15%	42.49%	24.75%	61.20%	4.26%	64.76%	0.95%
Fall 2009	1764	1007	81.63%	70.69%	66.84%	37.70%	27.32%	58.84%	4.08%	62.02%	1.02%
Fall 2010	1828	1001	79.87%	70.73%	66.47%	36.87%	26.81%	58.70%	3.83%	61.65%	0.88%
Fall 2011	1687	1005	79.08%	67.87%	64.32%	37.23%	23.41%	56.14%	3.91%	58.57%	1.19%
Fall 2012	1674	991	81.00%	68.94%	65.65%	36.02%	27.06%	55.85%	4.66%		
Fall 2013	1941	977	78.67%	68.99%	64.76%	39.10%	21.90%				
Fall 2014	1957	973	77.01%	66.89%	63.06%						
Fall 2015	1866	979	75.83%	66.77%							
Fall 2016	1717	972	73.68%								
Non-Resident											
Fall 2006	186	1028	75.81%	66.67%	63.44%	52.15%	12.37%	64.52%	0.54%	64.52%	0.00%
Fall 2007	212	1006	75.00%	66.98%	64.15%	40.57%	20.75%	57.08%	1.89%	59.43%	0.47%
Fall 2008	233	1016	83.26%	70.39%	67.38%	48.50%	18.45%	64.38%	2.15%	65.24%	0.00%
Fall 2009	268	1007	76.87%	68.66%	65.67%	40.30%	22.76%	60.45%	1.87%	63.06%	0.37%
Fall 2010	308	1004	83.12%	68.18%	65.91%	43.83%	18.18%	61.69%	0.97%	62.99%	0.00%
Fall 2011	284	992	74.65%	61.97%	59.51%	38.38%	19.01%	53.87%	1.41%	54.93%	0.00%
Fall 2012	236	1001	77.97%	69.49%	66.10%	48.31%	15.25%	61.86%	0.42%		
Fall 2013	267	1006	77.15%	67.42%	65.92%	50.19%	13.86%				
Fall 2014	205	989	73.17%	66.34%	62.44%						
Fall 2015	236	987	72.88%	63.98%							
Fall 2016	178	1005	71.91%								



Six-Year Graduation Rates By College First-Time, Full-Time Freshmen Cohorts Fall 2006 through Fall 2011



- College of Education
- Zeigler College of Business
- Undeclared
- College of Science & Technology
- College of Liberal Arts

Retention and Graduation Rates First-Time, Full-Time Freshmen Cohorts Fall 2006 through Fall 2016

College of Business Majors

Cohort Year	Cohort Size	SAT_Avg	Retention Year 2	Retention Year 3	Retention Year 4	Graduation 4 Years	Retention Year 5	Graduation 5 Years	Retention Year 6	Graduation 6 Years	Retention Year 7
UCOB											
Fall 2006	276	1042	83.33%	73.91%	71.38%	52.17%	16.67%	67.03%	1.09%	67.75%	0.36%
Fall 2007	269	1046	78.81%	69.52%	67.66%	47.21%	18.22%	63.20%	3.35%	64.68%	0.74%
Fall 2008	281	1051	81.49%	77.22%	74.02%	53.38%	18.15%	66.55%	2.85%	68.33%	1.42%
Fall 2009	252	1049	83.33%	76.19%	70.24%	48.02%	23.81%	68.65%	2.38%	69.44%	0.00%
Fall 2010	268	1044	82.09%	76.12%	70.52%	45.90%	22.39%	67.91%	0.75%	69.03%	0.37%
Fall 2011	271	1042	80.44%	71.59%	67.90%	43.91%	19.19%	58.67%	3.69%	60.89%	0.74%
Fall 2012	266	1032	84.59%	77.07%	73.68%	50.75%	21.43%	68.05%	3.38%		
Fall 2013	322	1030	83.85%	76.09%	73.91%	52.48%	17.39%				
Fall 2014	307	1032	85.99%	75.90%	70.36%						
Fall 2015	342	1012	74.85%	65.50%							
Fall 2016	304	992	72.37%								

Major determined as of the freeze date of the first fall term of enrollment.



Retention and Graduation Rates First-Time, Full-Time Freshmen Cohorts Fall 2006 through Fall 2016

College of Education Majors

Cohort Year	Cohort Size	SAT_Avg	Retention Year 2	Retention Year 3	Retention Year 4	Graduation 4 Years	Retention Year 5	Graduation 5 Years	Retention Year 6	Graduation 6 Years	Retention Year 7
UCOED											
Fall 2006	457	1050	89.06%	81.62%	78.99%	57.11%	21.88%	75.49%	2.63%	77.24%	0.22%
Fall 2007	443	1050	86.00%	79.68%	77.65%	51.47%	24.38%	72.23%	1.81%	73.81%	0.68%
Fall 2008	468	1050	86.11%	79.27%	76.71%	57.69%	19.23%	73.50%	2.56%	75.21%	0.64%
Fall 2009	382	1038	84.29%	75.92%	72.77%	46.07%	25.39%	69.90%	1.57%	71.47%	0.52%
Fall 2010	418	1027	86.60%	77.99%	76.08%	44.98%	27.99%	70.81%	2.87%	73.44%	0.48%
Fall 2011	311	1030	84.57%	76.85%	75.88%	44.69%	30.23%	70.10%	3.22%	72.67%	0.64%
Fall 2012	217	1030	88.02%	82.95%	79.26%	52.53%	24.42%	75.58%	0.92%		
Fall 2013	237	1006	88.19%	81.43%	77.64%	58.23%	17.72%				
Fall 2014	182	1017	79.67%	73.63%	72.53%						
Fall 2015	230	979	84.35%	75.65%							
Fall 2016	208	989	81.25%								

Major determined as of the freeze date of the first fall term of enrollment.



Retention and Graduation Rates First-Time, Full-Time Freshmen Cohorts Fall 2006 through Fall 2016

College of Liberal Arts Majors

Cohort Year	Cohort Size	SAT_Avg	Retention Year 2	Retention Year 3	Retention Year 4	Graduation 4 Years	Retention Year 5	Graduation 5 Years	Retention Year 6	Graduation 6 Years	Retention Year 7
UCOLA											
Fall 2006	242	1034	74.79%	65.70%	64.46%	46.28%	18.60%	60.74%	3.31%	63.22%	0.83%
Fall 2007	206	1055	83.50%	72.33%	70.39%	51.94%	14.56%	63.59%	2.43%	64.56%	0.97%
Fall 2008	218	1057	83.49%	73.85%	69.27%	55.50%	12.39%	64.68%	2.75%	68.35%	0.46%
Fall 2009	221	1051	82.81%	69.68%	68.78%	43.89%	19.00%	57.92%	2.26%	61.09%	1.36%
Fall 2010	252	1032	79.76%	67.86%	67.86%	42.06%	21.83%	59.92%	2.78%	61.90%	0.79%
Fall 2011	260	1039	76.92%	66.15%	62.31%	42.69%	18.85%	56.15%	3.08%	58.08%	0.77%
Fall 2012	250	1022	74.40%	63.60%	63.60%	40.00%	20.40%	54.40%	3.20%		
Fall 2013	243	1006	73.66%	65.84%	62.55%	44.86%	15.64%				
Fall 2014	282	999	76.60%	68.79%	67.38%						
Fall 2015	324	997	75.62%	67.59%							
Fall 2016	266	981	77.82%								



Major determined as of the freeze date of the first fall term of enrollment.
Excludes Liberal Arts Undeclared majors.

Retention and Graduation Rates First-Time, Full-Time Freshmen Cohorts Fall 2006 through Fall 2016

College of Science and Technology Majors

Cohort Year	Cohort Size	SAT_Avg	Retention Year 2	Retention Year 3	Retention Year 4	Graduation 4 Years	Retention Year 5	Graduation 5 Years	Retention Year 6	Graduation 6 Years	Retention Year 7
UCOST											
Fall 2006	223	1042	78.92%	69.96%	65.47%	35.43%	25.11%	59.19%	4.48%	61.43%	1.35%
Fall 2007	273	1064	76.19%	69.23%	64.47%	42.12%	20.51%	58.97%	4.76%	62.27%	1.10%
Fall 2008	299	1077	79.93%	73.91%	68.56%	34.11%	32.78%	60.20%	5.35%	64.21%	0.67%
Fall 2009	485	1074	83.30%	75.26%	71.55%	46.80%	22.89%	64.54%	4.74%	68.25%	1.24%
Fall 2010	443	1082	83.52%	74.72%	72.46%	47.86%	22.80%	66.14%	3.61%	68.85%	0.90%
Fall 2011	443	1073	82.17%	71.56%	69.07%	48.76%	17.61%	64.33%	2.48%	66.37%	0.90%
Fall 2012	400	1076	85.25%	75.25%	70.75%	43.25%	24.50%	61.75%	5.25%		
Fall 2013	493	1066	87.22%	78.50%	75.25%	51.93%	20.49%				
Fall 2014	498	1065	82.33%	74.50%	71.69%						
Fall 2015	487	1065	83.98%	76.80%							
Fall 2016	532	1057	80.45%								



Major determined as of the freeze date of the first fall term of enrollment.
Excludes Science & Technology Undeclared majors.

Retention and Graduation Rates

First-Time, Full-Time Freshmen Cohorts

Fall 2006 through Fall 2016

Undeclared Majors

Cohort Year	Cohort Size	SAT_Avg	Retention Year 2	Retention Year 3	Retention Year 4	Graduation 4 Years	Retention Year 5	Graduation 5 Years	Retention Year 6	Graduation 6 Years	Retention Year 7
Undeclared											
Fall 2006	432	911	74.77%	61.11%	57.64%	23.15%	30.32%	46.30%	4.86%	50.23%	1.39%
Fall 2007	488	924	76.02%	62.91%	56.35%	27.25%	24.80%	45.29%	4.10%	48.16%	1.23%
Fall 2008	539	934	76.62%	62.71%	59.55%	25.60%	30.80%	48.24%	5.57%	52.88%	0.93%
Fall 2009	692	911	76.16%	62.14%	57.95%	21.97%	33.67%	46.10%	5.35%	50.43%	1.16%
Fall 2010	755	916	74.57%	62.38%	55.50%	23.84%	28.21%	45.17%	4.77%	48.74%	0.93%
Fall 2011	686	919	73.03%	58.16%	53.35%	22.16%	25.66%	42.57%	4.52%	44.90%	1.46%
Fall 2012	777	917	76.83%	60.88%	57.27%	25.10%	29.60%	45.43%	5.02%		
Fall 2013	913	903	70.65%	58.49%	53.45%	24.21%	24.64%				
Fall 2014	893	887	69.65%	57.45%	52.30%						
Fall 2015	719	896	67.18%	56.47%							
Fall 2016	585	880	63.08%								



Major determined as of the freeze date of the first fall term of enrollment.
Includes Liberal Arts Undeclared & Science & Technology Undeclared students.