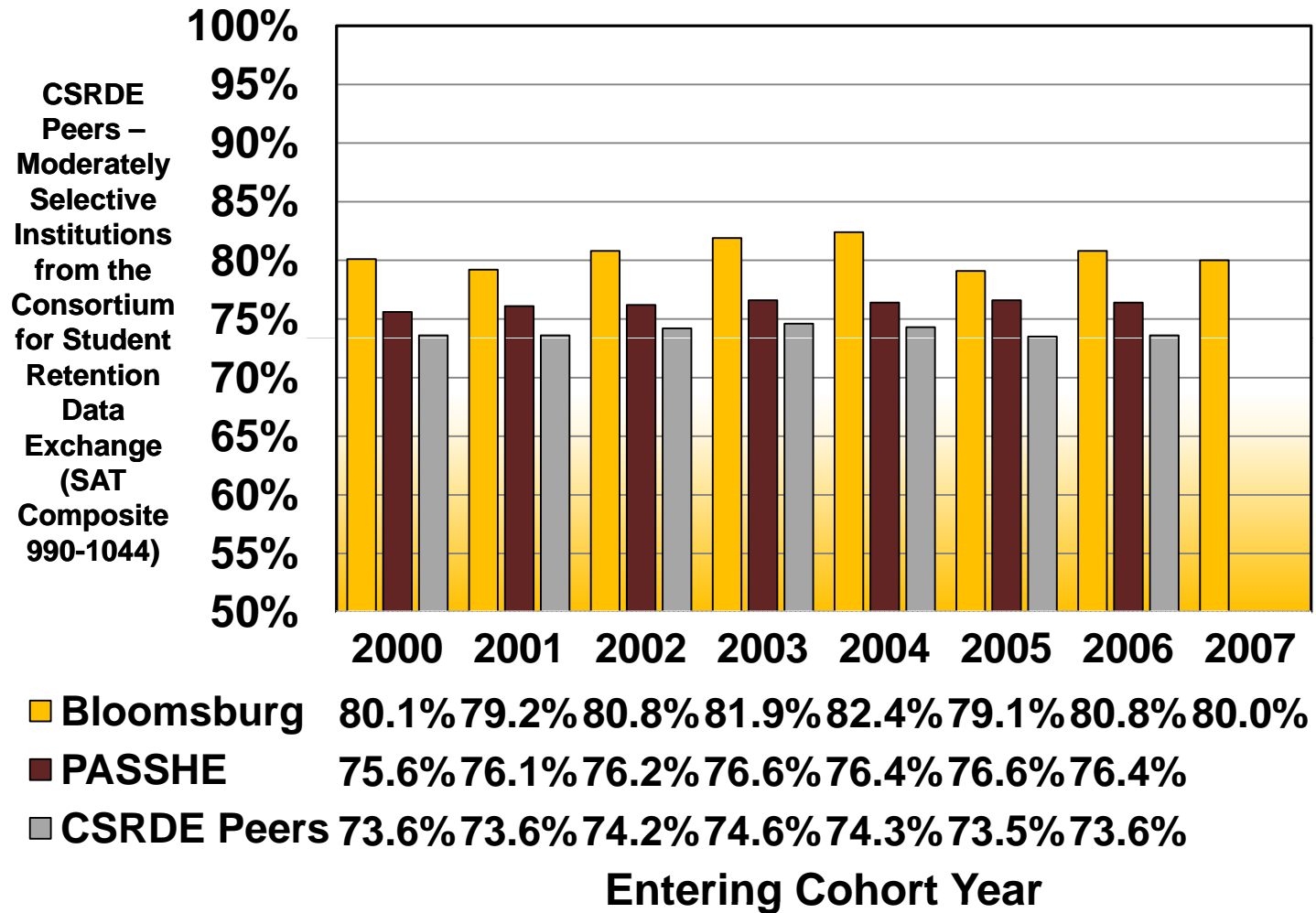
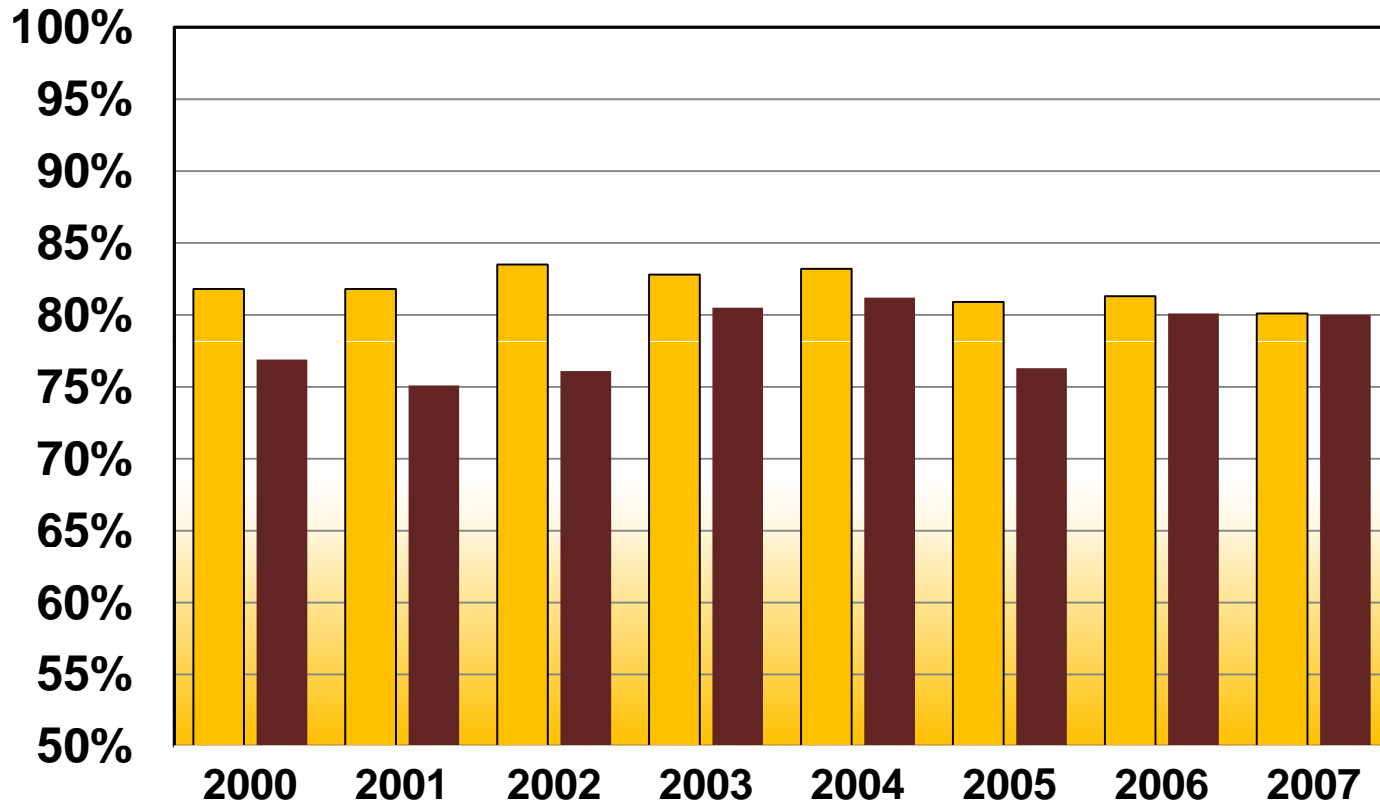


Retention & Graduation Rates

Second-Year Persistence Rates



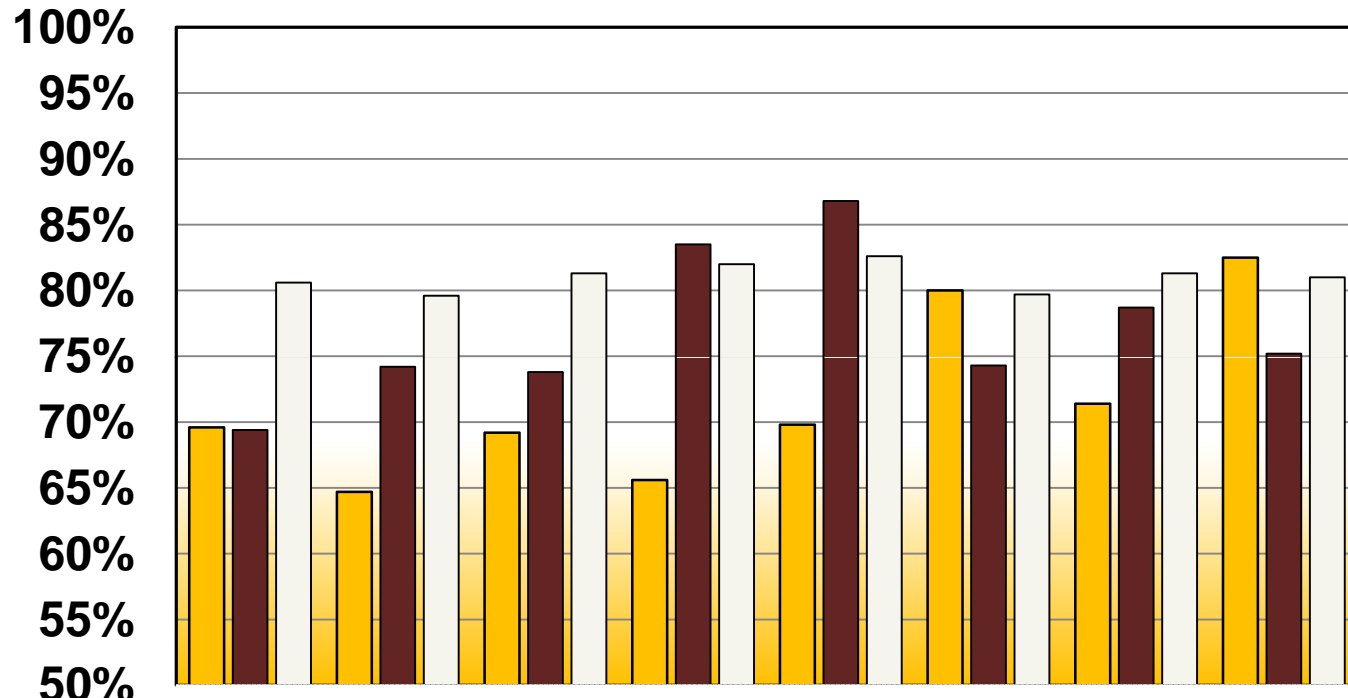
Second-Year Persistence Rates By Gender



Female	81.8%	81.8%	83.5%	82.8%	83.2%	80.9%	81.3%	80.1%
Male	76.9%	75.1%	76.1%	80.5%	81.2%	76.3%	80.1%	80.0%

Entering Cohort Year

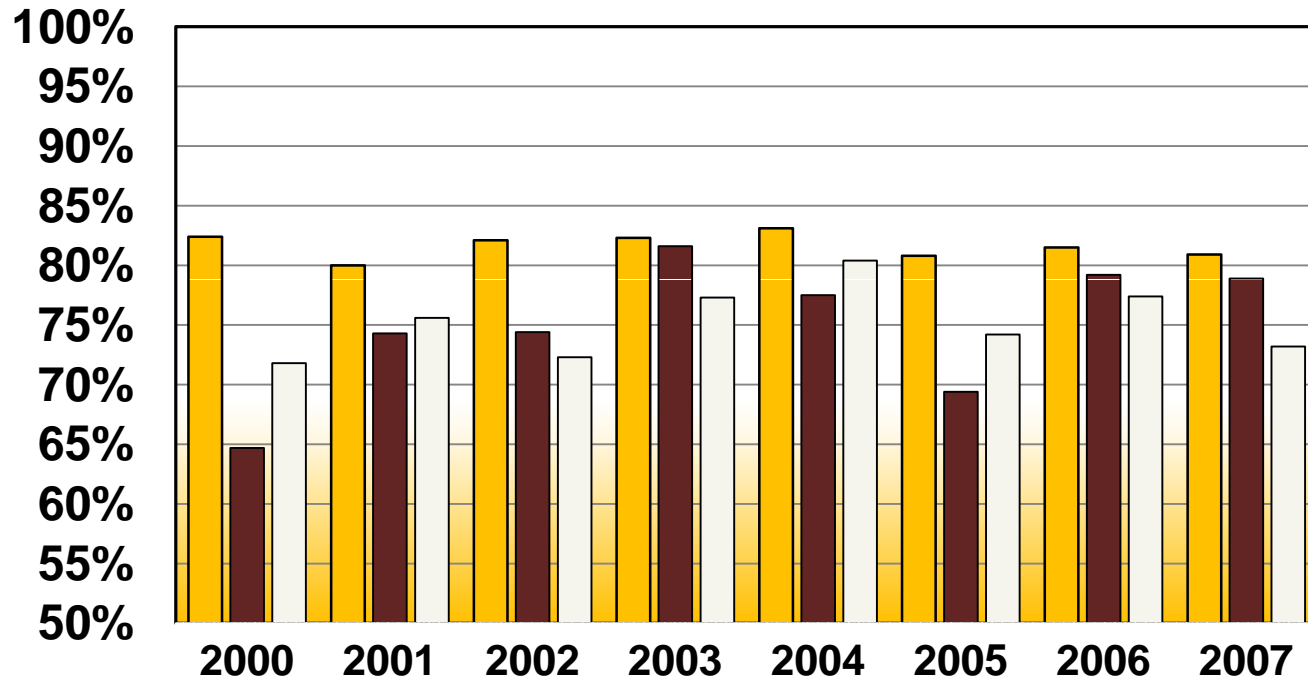
Second-Year Persistence Rates By Race



	2000	2001	2002	2003	2004	2005	2006	2007
■ Latino	69.6%	64.7%	69.2%	65.6%	69.8%	80.0%	71.4%	82.5%
■ Afr Amer	69.4%	74.2%	73.8%	83.5%	86.8%	74.3%	78.7%	75.2%
□ White	80.6%	79.6%	81.3%	82.0%	82.6%	79.7%	81.3%	81.0%

Entering Cohort Year

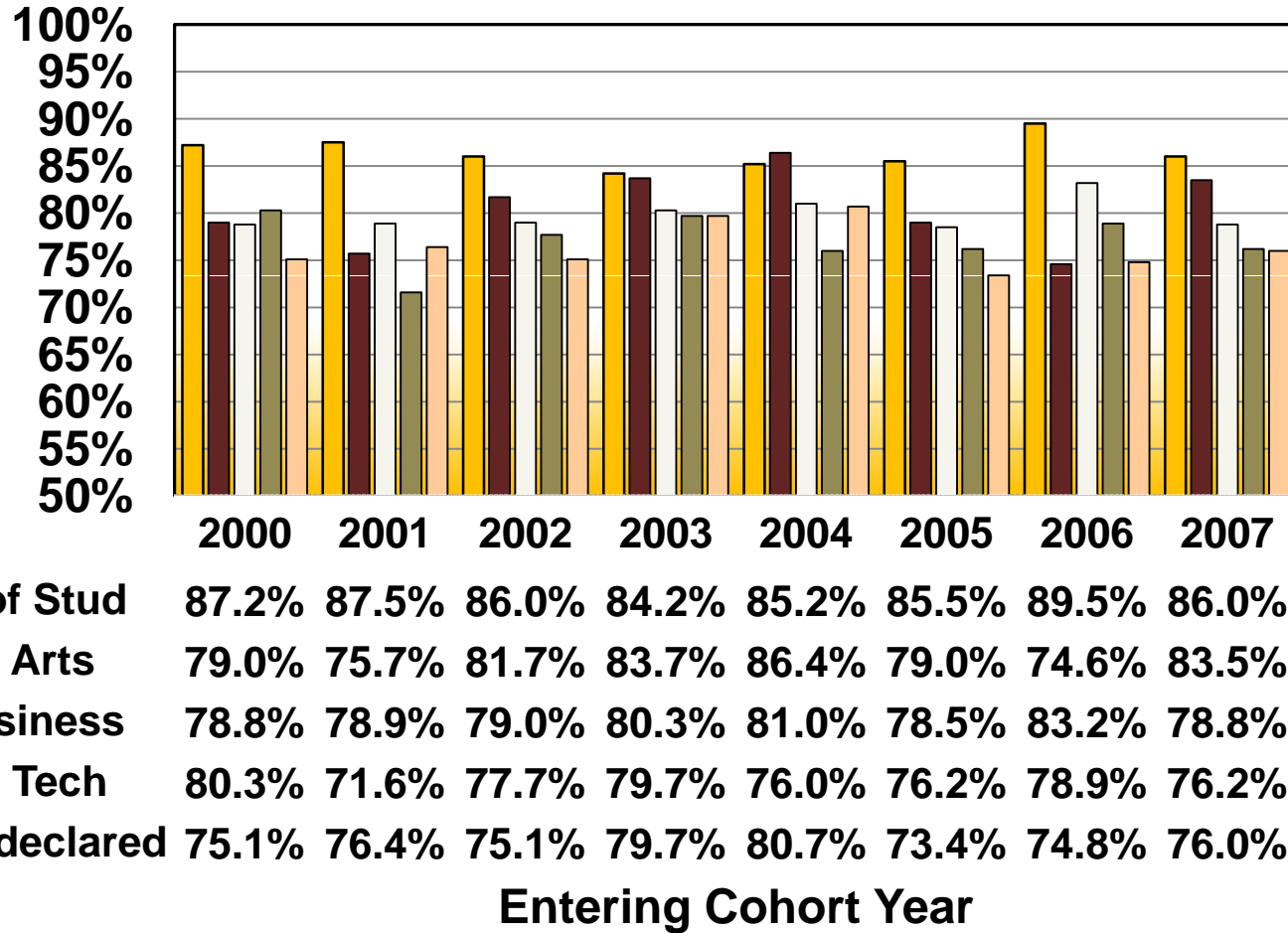
Second-Year Persistence Rates By Admission Category



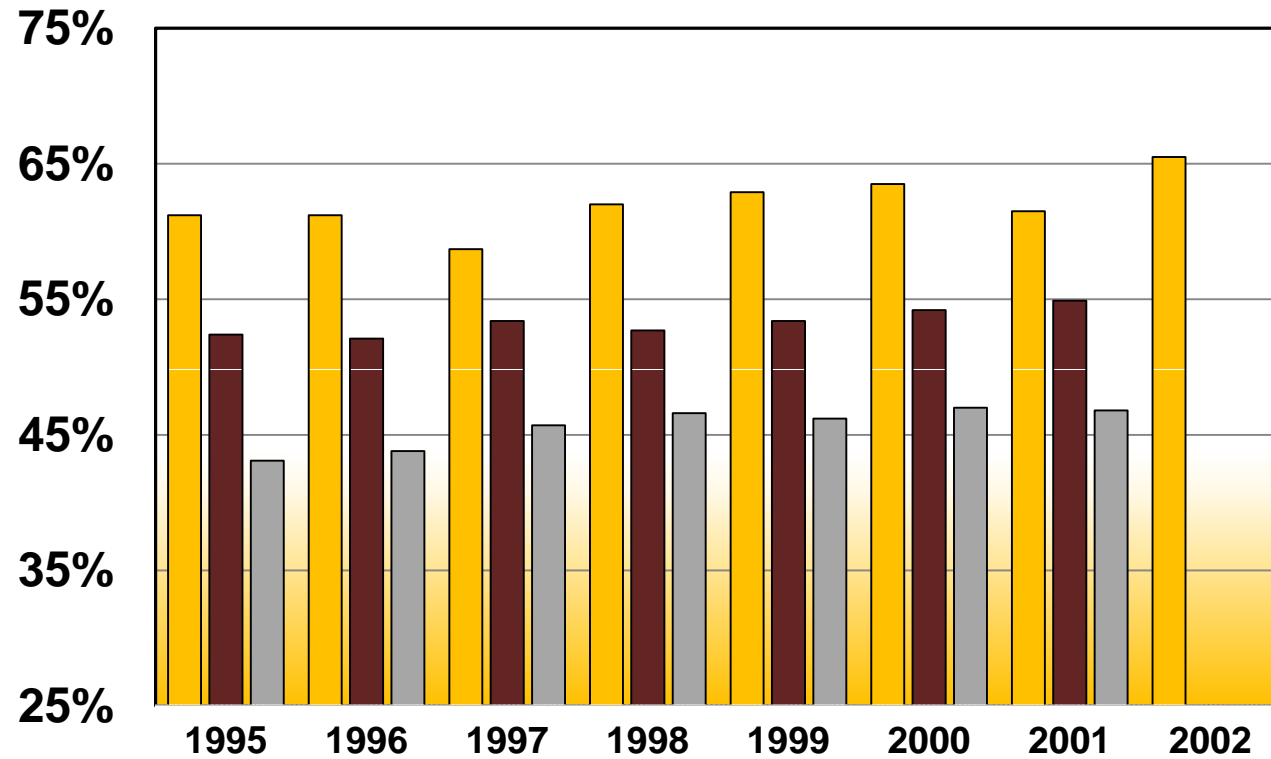
■ New Fresh	82.4%	80.0%	82.1%	82.3%	83.1%	80.8%	81.5%	80.9%
■ Sum Fresh	64.7%	74.3%	74.4%	81.6%	77.5%	69.4%	79.2%	78.9%
■ 101/EOP	71.8%	75.6%	72.3%	77.3%	80.4%	74.2%	77.4%	73.2%

Entering Cohort Year

Second-Year Persistence Rates By College of Admission



Six-Year Graduation Rates

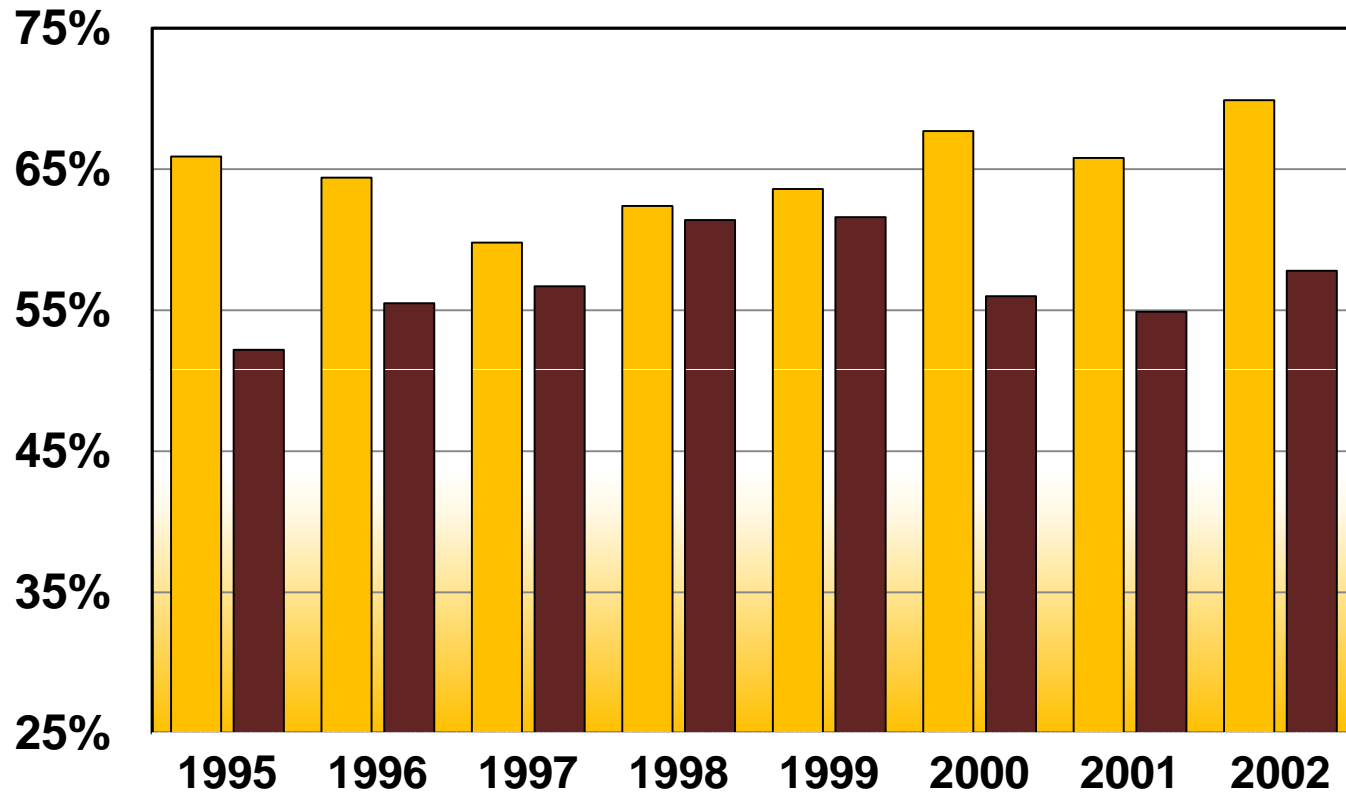


	1995	1996	1997	1998	1999	2000	2001	2002
■ Bloomsburg	61.2%	61.2%	58.7%	62.0%	62.9%	63.5%	61.5%	65.5%
■ PASSHE	52.4%	52.1%	53.4%	52.7%	53.4%	54.2%	54.9%	
■ CSRDE Peers	43.1%	43.8%	45.7%	46.6%	46.2%	47.0%	46.8%	

Entering Cohort Year

CSRDE Peers – Moderately Selective Institutions from the Consortium for Student Retention Data Exchange (SAT Composite 990-1044)

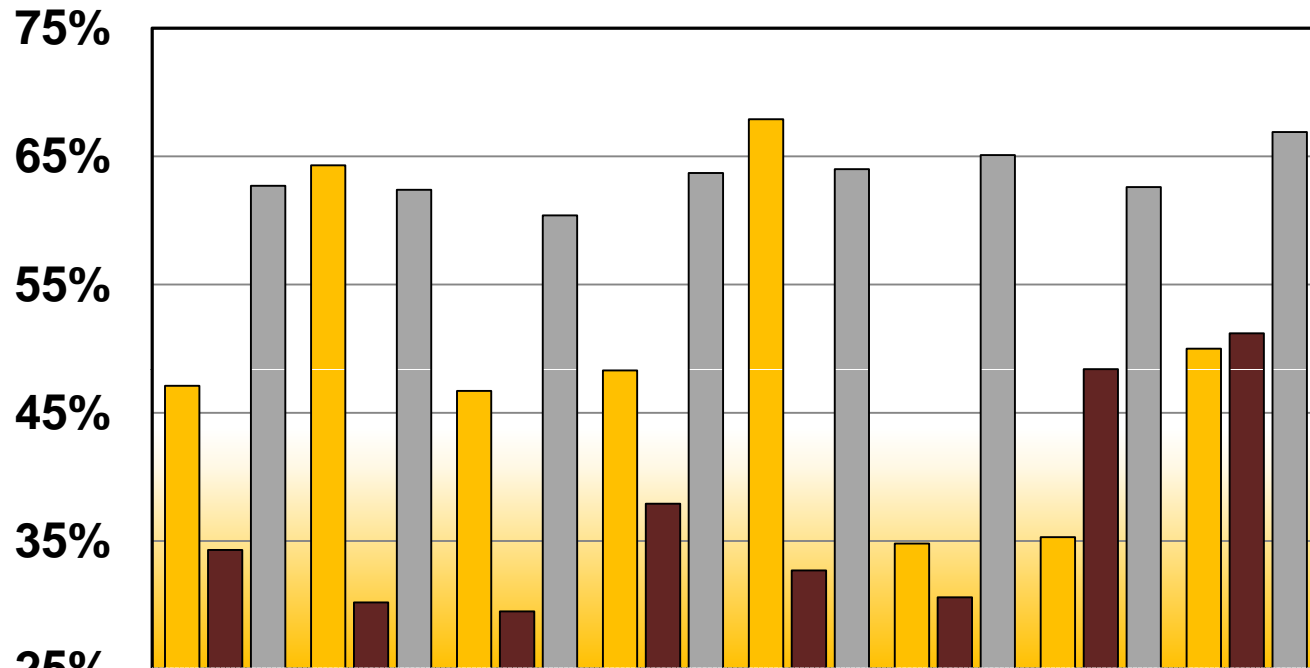
Six-Year Graduation Rates By Gender



■ Female	65.9%	64.4%	59.8%	62.4%	63.6%	67.7%	65.8%	69.9%
■ Male	52.2%	55.5%	56.7%	61.4%	61.6%	56.0%	54.9%	57.8%

Entering Cohort Year

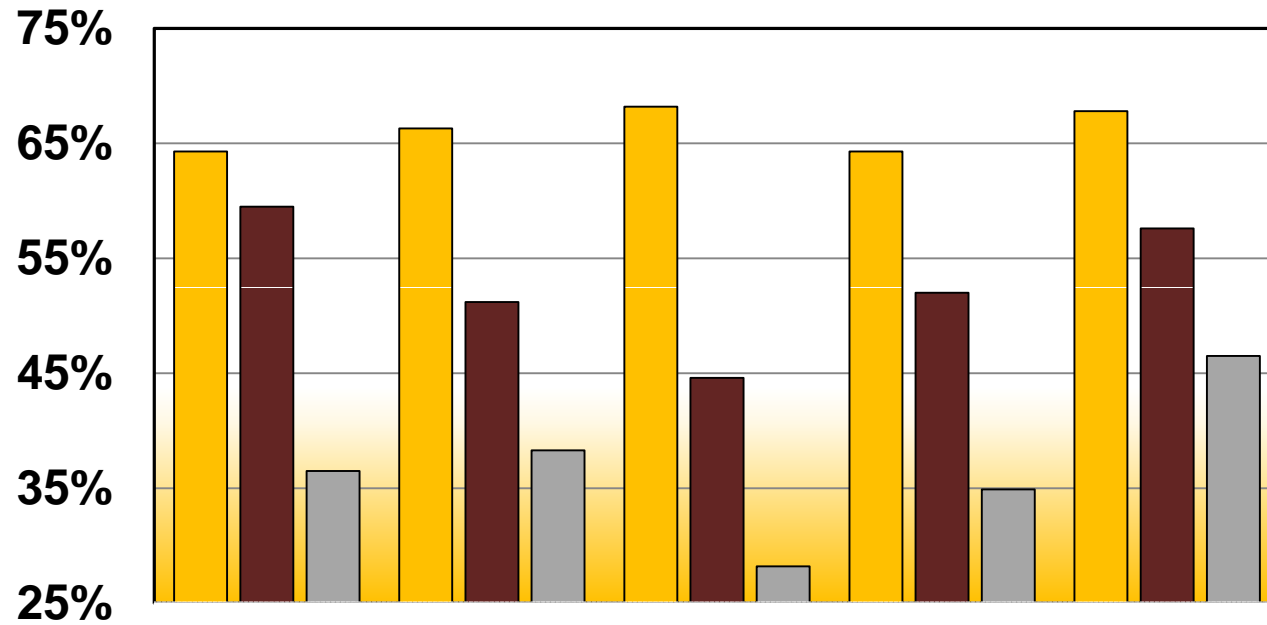
Six-Year Graduation Rates By Race



	1995	1996	1997	1998	1999	2000	2001	2002
■ Latino	47.1%	64.3%	46.7%	48.3%	67.9%	34.8%	35.3%	50.0%
■ Afr Amer	34.3%	30.2%	29.5%	37.9%	32.7%	30.6%	48.4%	51.2%
■ White	62.7%	62.4%	60.4%	63.7%	64.0%	65.1%	62.6%	66.9%

Entering Cohort Year

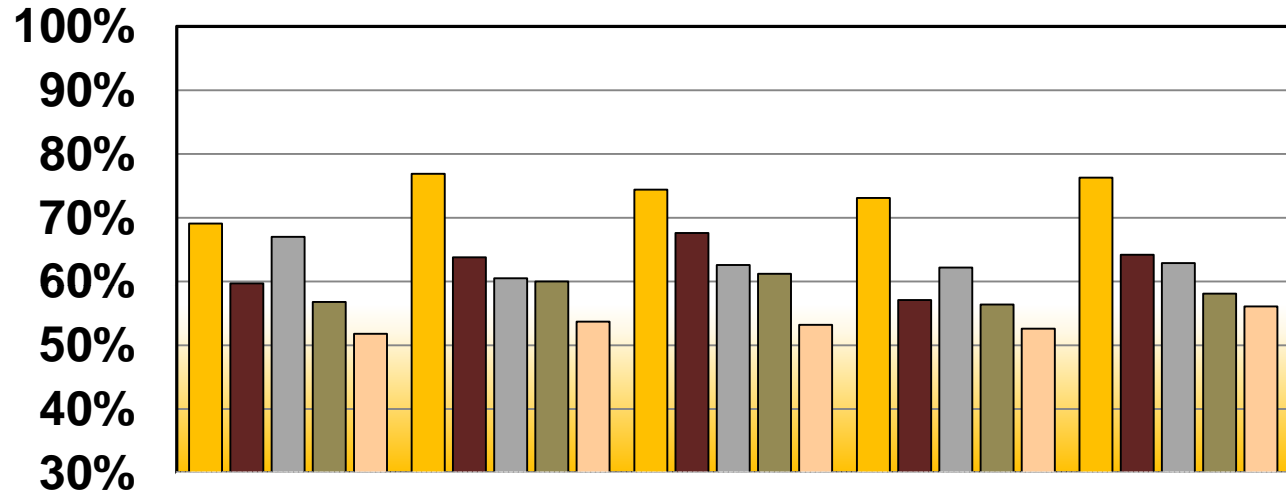
Six-Year Graduation Rates By Admission Category



	1998	1999	2000	2001	2002
New Fresh	64.3%	66.3%	68.2%	64.3%	67.8%
Sum Fresh	59.5%	51.2%	44.6%	52.0%	57.6%
101/EOP	36.5%	38.3%	28.2%	34.9%	46.5%

Entering Cohort Year

Six-Year Graduation Rates By College of Admission



	1998	1999	2000	2001	2002
Prof Stud	69.1%	76.9%	74.4%	73.1%	76.3%
Lib Arts	59.7%	63.8%	67.6%	57.1%	64.2%
Business	67.0%	60.5%	62.6%	62.2%	62.9%
Sci Tech	56.8%	60.0%	61.2%	56.4%	58.1%
Undeclared	51.8%	53.7%	53.2%	52.6%	56.1%

Entering Cohort Year



Retention and Graduation Rates By Gender
 First-Time, Full-Time Freshmen Fall 2000 through Fall 2007

Cohort Type	Cohort Year	Head Count	-- Continuation Rates --			----- Cumulative Graduation Rates and Continuation Rates -----					
			%Enrolled Year 2	%Enrolled Year 3	%Enrolled Year 4	%Grad in 4 Years	%Enrolled Year 5	%Grad in 5 Years	%Enrolled Year 6	%Grad in 6 Years	%Enrolled Year 7
Total	2000	1414	80.1%	72.3%	66.3%	41.5%	23.8%	60.7%	4.2%	63.5%	1.2%
Total	2001	1684	79.2%	69.4%	65.6%	38.4%	24.4%	58.8%	4.2%	61.5%	1.7%
Total	2002	1478	80.8%	72.2%	68.9%	44.0%	22.1%	63.7%	2.5%	65.5%	0.9%
Total	2003	1665	81.9%	72.7%	68.9%	40.7%	24.9%	60.7%	3.3%		
Total	2004	1534	82.4%	71.2%	66.9%	40.7%	22.8%				
Total	2005	1691	79.1%	68.8%	65.4%						
Total	2006	1630	80.8%	70.9%							
Total	2007	1679	80.0%								
Female	2000	912	81.8%	74.2%	69.3%	47.6%	20.9%	65.2%	3.3%	67.7%	0.9%
Female	2001	1021	81.8%	72.5%	69.0%	45.3%	20.6%	63.7%	3.2%	65.8%	1.1%
Female	2002	938	83.5%	74.8%	72.4%	51.3%	18.3%	68.6%	1.6%	69.9%	0.4%
Female	2003	1000	82.8%	74.3%	70.8%	47.6%	19.5%	63.4%	2.9%		
Female	2004	948	83.1%	71.6%	67.6%	45.5%	19.2%				
Female	2005	1050	80.9%	71.1%	67.8%						
Female	2006	987	81.3%	73.4%							
Female	2007	969	80.1%								
Male	2000	502	76.9%	68.9%	60.8%	30.5%	28.9%	52.4%	5.8%	56.0%	1.8%
Male	2001	663	75.1%	64.6%	60.5%	27.6%	30.3%	51.4%	5.6%	54.9%	2.6%
Male	2002	540	76.1%	67.6%	63.0%	31.3%	28.7%	55.2%	4.1%	57.8%	1.7%
Male	2003	665	80.5%	70.2%	66.2%	30.2%	32.9%	56.5%	3.9%		
Male	2004	586	81.2%	70.5%	65.9%	33.1%	28.5%				
Male	2005	641	76.3%	65.1%	61.5%						
Male	2006	643	80.1%	67.2%							
Male	2007	710	80.0%								



Retention and Graduation Rates By Racial/Ethnic Category
 First-Time, Full-Time Freshmen Fall 2000 through Fall 2007

Cohort Type	Cohort Year	Head Count	-- Continuation Rates --			----- Cumulative Graduation Rates and Continuation Rates -----					
			%Enrolled Year 2	%Enrolled Year 3	%Enrolled Year 4	%Grad in 4 Years	%Enrolled Year 5	%Grad in 5 Years	%Enrolled Year 6	%Grad in 6 Years	%Enrolled Year 7
African American	2000	49	69.4%	63.3%	49.0%	12.2%	26.5%	30.6%	10.2%	30.6%	2.0%
African American	2001	62	74.2%	69.4%	61.3%	19.4%	35.5%	40.3%	8.1%	48.4%	3.2%
African American	2002	84	73.8%	64.3%	63.1%	14.3%	45.2%	45.2%	6.0%	51.2%	3.6%
African American	2003	103	83.5%	68.0%	54.4%	11.7%	39.8%	35.9%	9.7%		
African American	2004	121	86.8%	61.2%	52.1%	13.2%	31.4%				
African American	2005	140	74.3%	59.3%	52.9%						
African American	2006	150	78.7%	61.3%							
African American	2007	145	75.2%								
Amer Ind/Alaska Native	2000	1	100.0%	100.0%	100.0%	100.0%	0.0%	100.0%	0.0%	100.0%	0.0%
Amer Ind/Alaska Native	2001	3	100.0%	100.0%	100.0%	33.3%	66.7%	66.7%	0.0%	66.7%	0.0%
Amer Ind/Alaska Native	2002	4	50.0%	25.0%	25.0%	0.0%	25.0%	0.0%	0.0%	25.0%	0.0%
Amer Ind/Alaska Native	2003	5	80.0%	40.0%	60.0%	20.0%	40.0%	40.0%	20.0%		
Amer Ind/Alaska Native	2004	0									
Amer Ind/Alaska Native	2005	2	50.0%	50.0%	50.0%						
Amer Ind/Alaska Native	2006	3	100.0%	66.7%							
Amer Ind/Alaska Native	2007	2	50.0%								
Asian or Pacific Islander	2000	10	90.0%	80.0%	70.0%	20.0%	50.0%	70.0%	0.0%	70.0%	0.0%
Asian or Pacific Islander	2001	15	93.3%	73.3%	60.0%	33.3%	33.3%	60.0%	0.0%	60.0%	0.0%
Asian or Pacific Islander	2002	16	100.0%	87.5%	75.0%	43.8%	37.5%	75.0%	6.3%	75.0%	0.0%
Asian or Pacific Islander	2003	15	93.3%	86.7%	86.7%	46.7%	33.3%	66.7%	0.0%		
Asian or Pacific Islander	2004	14	78.6%	78.6%	78.6%	42.9%	35.7%				
Asian or Pacific Islander	2005	22	81.8%	77.3%	68.2%						
Asian or Pacific Islander	2006	19	84.2%	68.4%							
Asian or Pacific Islander	2007	13	84.6%								



Retention and Graduation Rates By Racial/Ethnic Category
 First-Time, Full-Time Freshmen Fall 2000 through Fall 2007

Cohort Type	Cohort Year	Head Count	-- Continuation Rates --			----- Cumulative Graduation Rates and Continuation Rates -----					
			%Enrolled Year 2	%Enrolled Year 3	%Enrolled Year 4	%Grad in 4 Years	%Enrolled Year 5	%Grad in 5 Years	%Enrolled Year 6	%Grad in 6 Years	%Enrolled Year 7
Latino	2000	23	69.6%	56.5%	43.5%	26.1%	17.4%	30.4%	8.7%	34.8%	4.3%
Latino	2001	34	64.7%	41.2%	44.1%	20.6%	11.8%	35.3%	0.0%	35.3%	0.0%
Latino	2002	26	69.2%	50.0%	50.0%	30.8%	15.4%	46.2%	3.8%	50.0%	0.0%
Latino	2003	32	65.6%	56.3%	50.0%	28.1%	25.0%	40.6%	6.3%		
Latino	2004	43	69.8%	48.8%	46.5%	14.0%	30.2%				
Latino	2005	50	80.0%	64.0%	56.0%						
Latino	2006	35	71.4%	62.9%							
Latino	2007	63	82.5%								
White	2000	1325	80.6%	72.9%	67.3%	42.9%	23.6%	62.2%	3.9%	65.1%	1.1%
White	2001	1564	79.6%	69.8%	66.2%	39.6%	24.0%	60.0%	4.2%	62.6%	1.7%
White	2002	1338	81.3%	73.2%	70.0%	46.4%	20.6%	65.4%	2.2%	66.9%	0.7%
White	2003	1481	82.0%	73.5%	70.2%	43.3%	23.4%	63.1%	2.7%		
White	2004	1297	82.6%	73.3%	69.7%	44.5%	21.8%				
White	2005	1408	79.7%	70.2%	67.5%						
White	2006	1315	81.3%	72.4%							
White	2007	1308	81.0%								
Foreign	2000	6	66.7%	66.7%	50.0%	50.0%	16.7%	66.7%	0.0%	66.7%	0.0%
Foreign	2001	6	50.0%	83.3%	66.7%	16.7%	50.0%	66.7%	0.0%	66.7%	0.0%
Foreign	2002	4	50.0%	50.0%	50.0%	50.0%	0.0%	50.0%	0.0%	50.0%	0.0%
Foreign	2003	7	71.4%	57.1%	57.1%	14.3%	42.9%	28.6%	14.3%		
Foreign	2004	5	60.0%	40.0%	40.0%	40.0%	20.0%				
Foreign	2005	5	40.0%	40.0%	20.0%						
Foreign	2006	12	41.7%	33.3%							
Foreign	2007	3	100.0%								



Retention and Graduation Rates By Racial/Ethnic Category
 First-Time, Full-Time Freshmen Fall 2000 through Fall 2007

Cohort Type	Cohort Year	Head Count	-- Continuation Rates --			----- Cumulative Graduation Rates and Continuation Rates -----					
			%Enrolled	%Enrolled	%Enrolled	-----		-----		-----	
			Year 2	Year 3	Year 4	%Grad in 4 Years	%Enrolled Year 5	%Grad in 5 Years	%Enrolled Year 6	%Grad in 6 Years	%Enrolled Year 7
Unknown	2000	0									
Unknown	2001	0									
Unknown	2002	6	100.0%	50.0%	33.3%	0.0%	33.3%	33.3%	0.0%	33.3%	0.0%
Unknown	2003	22	81.8%	68.2%	72.7%	27.3%	36.4%	50.0%	4.5%		
Unknown	2004	54	81.5%	61.1%	50.0%	33.3%	16.7%				
Unknown	2005	64	79.7%	62.5%	56.3%						
Unknown	2006	96	84.4%	74.0%							
Unknown	2007	145	74.5%								



Retention and Graduation Rates By Admission Category
 First-Time, Full-Time Freshmen Fall 2000 through Fall 2007

Cohort Type	Cohort Year	Head Count	-- Continuation Rates --			----- Cumulative Graduation Rates and Continuation Rates -----					
			%Enrolled	%Enrolled	%Enrolled	%Grad		%Enrolled		%Grad	
			Year 2	Year 3	Year 4	in 4 Years	Year 5	in 5 Years	Year 6	in 6 Years	Year 7
New Freshman	2000	1190	82.4%	74.9%	70.2%	45.7%	23.7%	65.5%	3.7%	68.2%	1.1%
New Freshman	2001	1427	80.0%	71.0%	67.8%	42.0%	23.7%	61.9%	4.1%	64.3%	1.7%
New Freshman	2002	1252	82.1%	74.1%	71.2%	46.3%	21.9%	66.2%	2.0%	67.8%	0.6%
New Freshman	2003	1419	82.3%	73.8%	70.9%	44.3%	23.5%	64.4%	2.6%		
New Freshman	2004	1266	83.1%	73.8%	70.0%	45.7%	21.5%				
New Freshman	2005	1393	80.8%	71.4%	68.7%						
New Freshman	2006	1289	81.5%	73.5%							
New Freshman	2007	1348	80.9%								
Summer-Fall Freshmen	2000	139	64.7%	56.8%	48.9%	24.5%	22.3%	41.0%	2.9%	44.6%	0.7%
Summer-Fall Freshmen	2001	171	74.3%	63.2%	57.9%	21.1%	29.8%	46.8%	4.7%	52.0%	1.8%
Summer-Fall Freshmen	2002	125	74.4%	64.0%	56.8%	41.6%	15.2%	56.0%	3.2%	57.6%	0.8%
Summer-Fall Freshmen	2003	114	81.6%	67.5%	62.3%	29.8%	25.4%	49.1%	2.6%		
Summer-Fall Freshmen	2004	120	77.5%	60.0%	54.2%	22.5%	25.0%				
Summer-Fall Freshmen	2005	169	69.2%	58.0%	52.7%						
Summer-Fall Freshmen	2006	195	79.0%	62.1%							
Summer-Fall Freshmen	2007	204	78.9%								
Act 101/EOP	2000	85	71.8%	62.4%	40.0%	10.6%	27.1%	25.9%	12.9%	28.2%	3.5%
Act 101/EOP	2001	86	75.6%	54.7%	44.2%	11.6%	25.6%	31.4%	4.7%	34.9%	1.2%
Act 101/EOP	2002	101	72.3%	58.4%	56.4%	17.8%	33.7%	41.6%	7.9%	46.5%	4.0%
Act 101/EOP	2003	132	77.3%	65.2%	53.8%	10.6%	38.6%	30.3%	11.4%		
Act 101/EOP	2004	148	80.4%	58.1%	51.4%	12.8%	31.8%				
Act 101/EOP	2005	128	74.2%	54.7%	46.1%						
Act 101/EOP	2006	141	77.3%	59.6%							
Act 101/EOP	2007	127	73.2%								



Retention and Graduation Rates By College of Admission
 First-Time, Full-Time Freshmen Fall 2000 through Fall 2007

Cohort Type	Cohort Year	Head Count	-- Continuation Rates --			----- Cumulative Graduation Rates and Continuation Rates -----					
			%Enrolled Year 2	%Enrolled Year 3	%Enrolled Year 4	%Grad in 4 Years	%Enrolled Year 5	%Grad in 5 Years	%Enrolled Year 6	%Grad in 6 Years	%Enrolled Year 7
Professional Studies	2000	359	87.2%	80.5%	75.8%	51.8%	24.0%	71.9%	3.3%	74.4%	0.6%
Professional Studies	2001	464	87.5%	79.5%	75.9%	50.4%	24.6%	70.3%	3.9%	73.1%	1.1%
Professional Studies	2002	473	86.0%	81.2%	79.3%	55.0%	22.8%	75.5%	1.1%	76.3%	0.6%
Professional Studies	2003	532	84.2%	75.4%	73.1%	47.7%	22.9%	67.9%	2.6%		
Professional Studies	2004	506	85.2%	77.3%	72.3%	48.2%	21.7%				
Professional Studies	2005	511	85.5%	77.9%	74.2%						
Professional Studies	2006	455	89.5%	82.0%							
Professional Studies	2007	443	86.0%								
Liberal Arts	2000	219	79.0%	74.0%	68.9%	50.2%	18.3%	65.8%	2.7%	67.6%	1.4%
Liberal Arts	2001	333	75.7%	64.0%	61.3%	40.8%	17.4%	56.2%	2.7%	57.1%	1.5%
Liberal Arts	2002	246	81.7%	69.5%	67.5%	47.2%	18.3%	61.8%	2.4%	64.2%	0.4%
Liberal Arts	2003	258	83.7%	77.5%	73.3%	48.4%	21.7%	65.5%	0.8%		
Liberal Arts	2004	213	86.4%	76.1%	73.2%	54.5%	17.8%				
Liberal Arts	2005	257	79.0%	66.1%	64.6%						
Liberal Arts	2006	241	74.7%	65.6%							
Liberal Arts	2007	206	83.5%								
Business	2000	278	78.8%	69.8%	66.9%	45.7%	20.1%	60.4%	3.6%	62.6%	1.8%
Business	2001	331	78.9%	69.5%	67.4%	37.8%	26.9%	59.8%	4.8%	62.2%	1.8%
Business	2002	291	79.0%	72.5%	67.4%	43.3%	19.6%	61.9%	2.4%	62.9%	1.0%
Business	2003	279	80.3%	72.4%	71.0%	47.0%	21.1%	65.6%	2.2%		
Business	2004	231	81.0%	72.7%	71.9%	50.6%	18.6%				
Business	2005	298	78.5%	70.1%	68.1%						
Business	2006	273	83.2%	73.6%							
Business	2007	269	78.8%								



Retention and Graduation Rates By College of Admission
 First-Time, Full-Time Freshmen Fall 2000 through Fall 2007

Cohort Type	Cohort Year	Head Count	-- Continuation Rates --			----- Cumulative Graduation Rates and Continuation Rates -----					
			%Enrolled Year 2	%Enrolled Year 3	%Enrolled Year 4	%Grad in 4 Years	%Enrolled Year 5	%Grad in 5 Years	%Enrolled Year 6	%Grad in 6 Years	%Enrolled Year 7
Science & Technology	2000	152	80.3%	72.4%	63.8%	33.6%	28.9%	55.9%	7.9%	61.2%	0.7%
Science & Technology	2001	225	71.6%	62.2%	58.7%	31.6%	25.3%	52.4%	6.2%	56.4%	2.7%
Science & Technology	2002	179	77.7%	67.6%	61.5%	30.7%	24.6%	55.3%	3.4%	58.1%	1.1%
Science & Technology	2003	231	79.7%	70.1%	68.0%	29.4%	32.0%	55.0%	5.6%		
Science & Technology	2004	196	76.0%	64.3%	59.7%	29.1%	25.5%				
Science & Technology	2005	189	76.2%	66.7%	61.9%						
Science & Technology	2006	223	78.9%	70.0%							
Science & Technology	2007	273	76.2%								
Undeclared	2000	406	75.1%	66.0%	56.9%	27.8%	27.1%	50.0%	4.7%	53.2%	1.5%
Undeclared	2001	331	76.4%	65.3%	58.6%	24.2%	28.1%	48.9%	3.9%	52.6%	1.8%
Undeclared	2002	289	75.1%	62.3%	59.5%	32.2%	25.3%	52.9%	4.5%	56.1%	1.4%
Undeclared	2003	365	79.7%	67.1%	58.9%	27.1%	28.2%	46.6%	5.5%		
Undeclared	2004	388	80.7%	63.1%	57.2%	23.5%	27.8%				
Undeclared	2005	436	73.4%	59.9%	55.3%						
Undeclared	2006	432	74.8%	61.1%							
Undeclared	2007	488	76.0%								