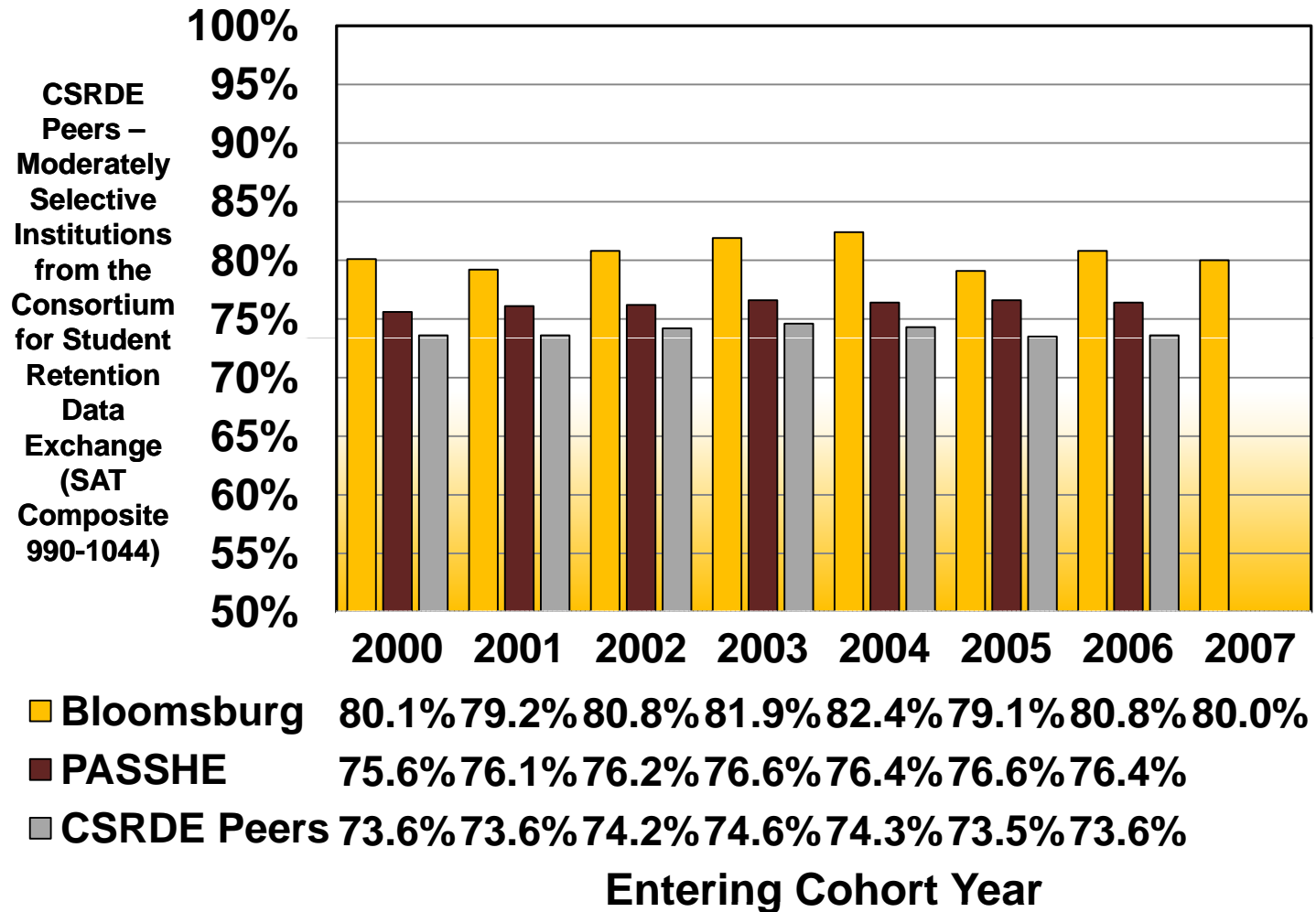
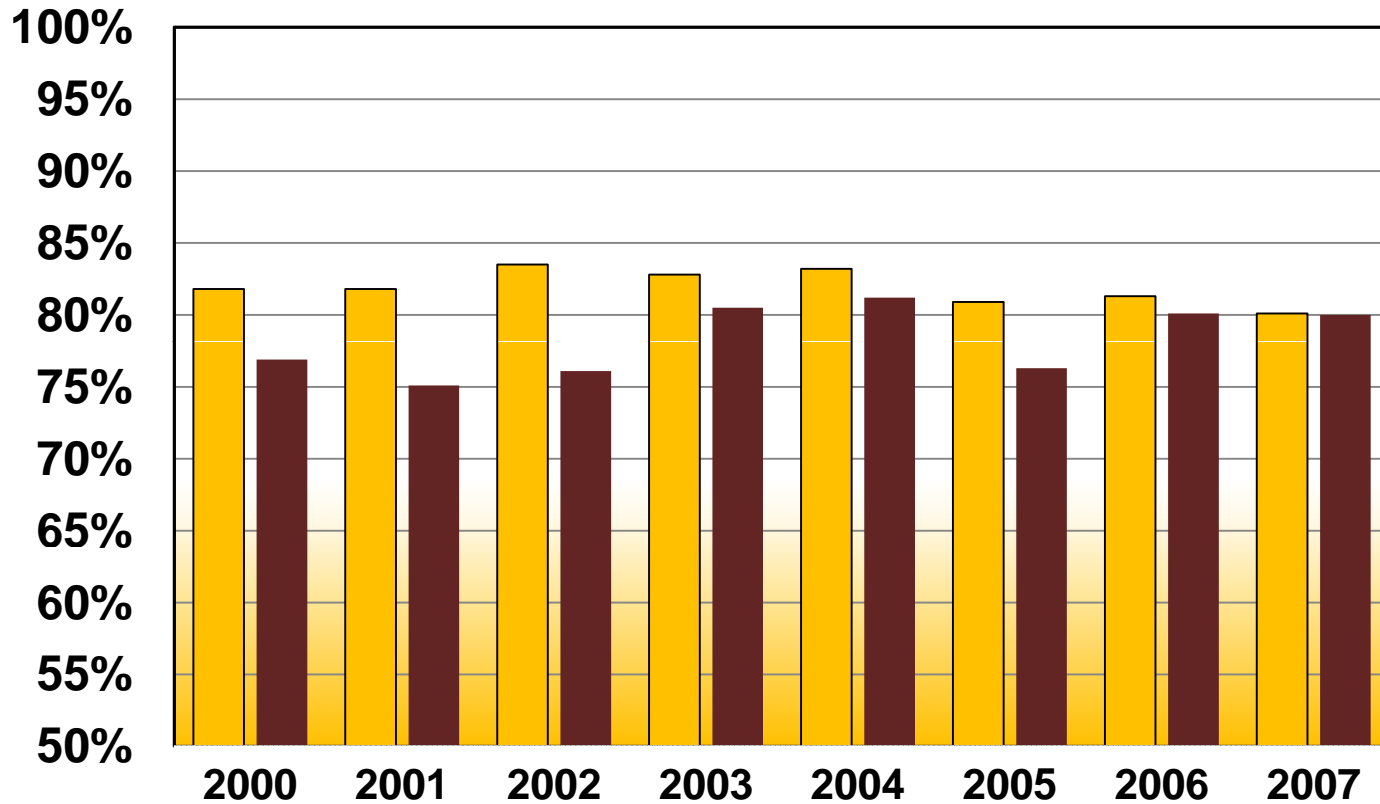


Second-Year Persistence Rates



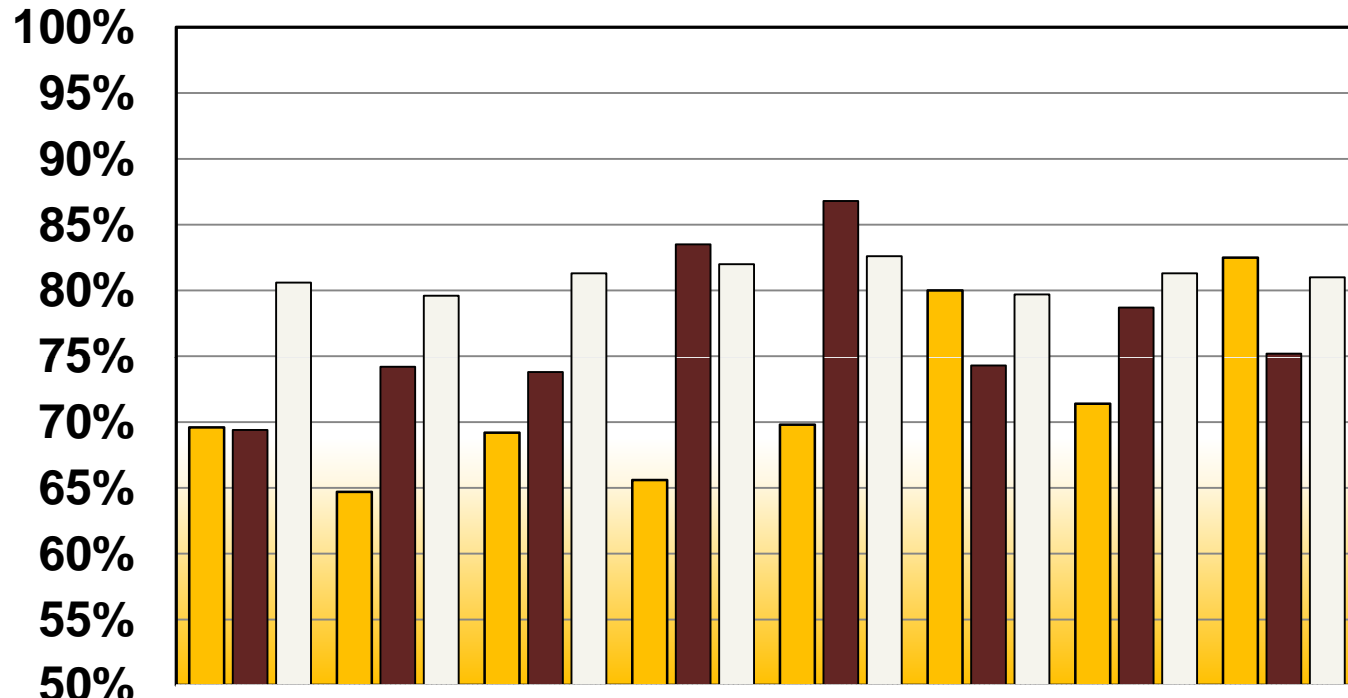
Second-Year Persistence Rates By Gender



Female	81.8%	81.8%	83.5%	82.8%	83.2%	80.9%	81.3%	80.1%
Male	76.9%	75.1%	76.1%	80.5%	81.2%	76.3%	80.1%	80.0%

Entering Cohort Year

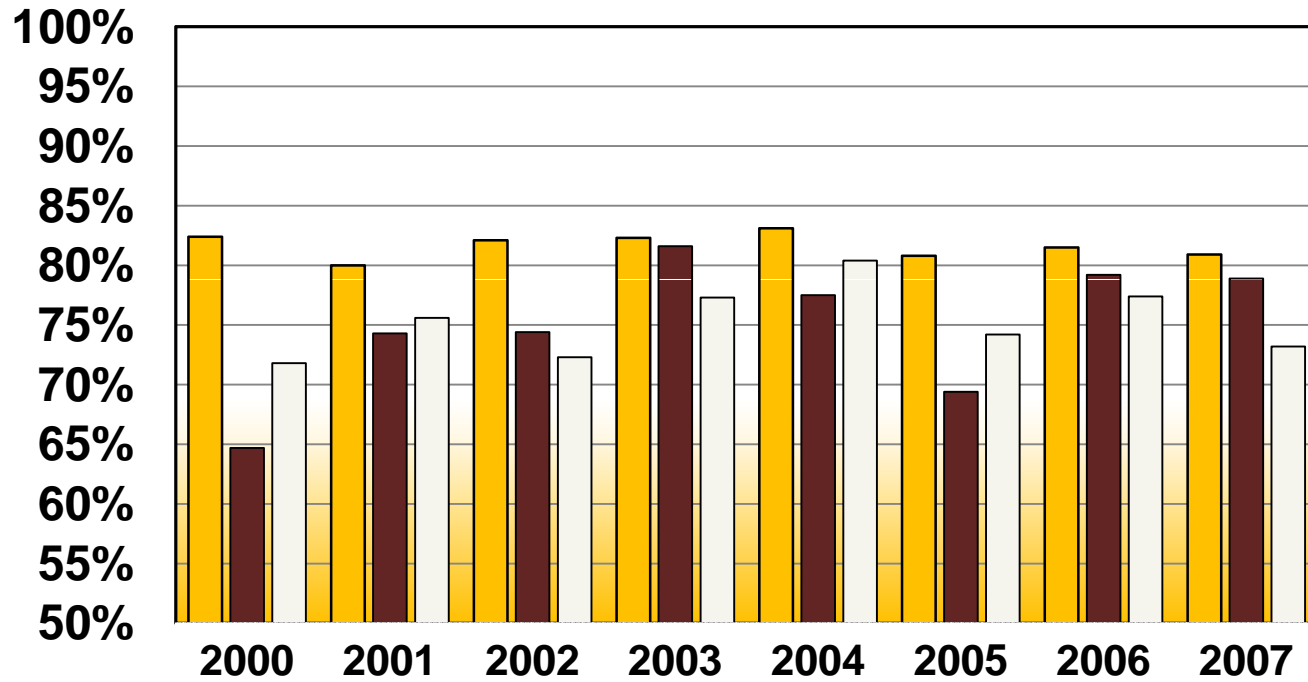
Second-Year Persistence Rates By Race



	2000	2001	2002	2003	2004	2005	2006	2007
■ Latino	69.6%	64.7%	69.2%	65.6%	69.8%	80.0%	71.4%	82.5%
■ Afr Amer	69.4%	74.2%	73.8%	83.5%	86.8%	74.3%	78.7%	75.2%
□ White	80.6%	79.6%	81.3%	82.0%	82.6%	79.7%	81.3%	81.0%

Entering Cohort Year

Second-Year Persistence Rates By Admission Category



■ New Fresh	82.4%	80.0%	82.1%	82.3%	83.1%	80.8%	81.5%	80.9%
■ Sum Fresh	64.7%	74.3%	74.4%	81.6%	77.5%	69.4%	79.2%	78.9%
■ 101/EOP	71.8%	75.6%	72.3%	77.3%	80.4%	74.2%	77.4%	73.2%

Entering Cohort Year

Second-Year Persistence Rates By College of Admission

