

Tenth Annual

Mid **Atlantic** **LGBTQA** **Conference**

Reunion: Return, Reconnect, Respond



November 3 - 5, 2017
Bloomsburg University of Pennsylvania

Welcome from the Conference Chair



Dear Conference Attendees:

On behalf of the conference committee, it is my pleasure to welcome you to the Tenth Annual Mid-Atlantic LGBTQA Conference here at Bloomsburg University! This weekend we celebrate the fact that ten years have gone by since our very own Dr. Mark Usry innovated this wonderful conference. The creation of the conference was a response to a missing programmatic piece. Ten years ago there was no space to send the LGBTQA undergraduate students of Bloomsburg University in order to celebrate their identities, learn about themselves (and others), and network with peers, faculty, and staff. Sensing a great opportunity, he created the space himself. For that, we are all very grateful.

We gather this weekend keeping the theme of “Reunion: Return, Reconnect, Respond” at the forefront of our minds. Whether this is your first or your fourth time attending the conference, I hope that you will feel right at home among this circle of family and friends. I hope that the information that you learn in our fantastic sessions will invigorate you and inspire you to new heights in your professional and personal journeys. Moreover, I hope

that your conference experience will call you to renew your commitment to be engaged civically as you respond to the political, social, cultural, and economic challenges experienced within the communities to which you belong.

I would like to express my heartfelt thanks to a number of people who have made this experience possible for all of us. To all of our presenters, thank you for all of the time and dedication spent preparing to educate us. To Dr. Raechel Tiffe, our Keynote Speaker, thank you for emboldening us to “(Re)Turn to Resistance”, and giving us needed motivation to face these uncertain times. To the conference committee, thank you one million times over for all of your hard work. As you look around at all the smiling faces of the attendees, may you know that it has paid off. A big thank you also to all of our fabulous conference volunteers for all that you do. Thank you to our vendors for supporting our event. Thank you to our Conference Operations Coordinator, Asa Kelley. Although most of his work is done behind the scenes, it is indeed the most vital to making this event happen. We appreciate you very much. Lastly, thank you to our Conference Vice-Chair and Exhibition Curator, Dave Kube. You have done amazing things with the conference art exhibit over the years that call us to poignantly reflect on how art imitates life. I wish you the very best of luck next year as you step into the role of Conference Chair.

Finally, I would like to thank all of you for choosing to spend your weekend at this very special event. During your time here, I hope you will feel the spirit of love, support, and solidarity that persists on stronger than ever, 10 years later.

Sincerely,
Dr. Shavonne Shorter
Conference Chair

Save the date!

The 11th Annual Mid-Atlantic LGBTQA Conference
March On: Leading the Way for a New Generation
November 2-4, 2018

Students today enter college with new attitudes about gender and sexuality; they were raised in a time after Elton and Ellen while it has always been ‘okay to be Takei’. But even as Ru Paul and Laverne Cox bring queer culture into the main stream, this generation must recognize the battles fought and won by our compatriots throughout history, and realize there are many more struggles yet to come.

Be on the lookout for a Call for Proposals
which will be circulated soon.

Cover Image: Kris Sanford - *Folding Chairs*

About our Keynote Speaker—Dr. Raechel Tiffe

Dr. Raechel Tiffe was an activist before she was an academic. As a working-class, first-generation, queer woman, she understood first hand concepts of privilege and power. During her college years at DePaul University she learned the language and theory behind her experiences, as well as the ways in which her experiences connected to other oppressed and marginalized communities. For Dr. Tiffe, education was freedom, and as a senior in college, she decided that she would devote her life to research and teaching that contributed to the project of justice and liberation for oppressed groups.

Before graduate school, Dr. Tiffe was active in social justice communities in Chicago, including anti-war groups, LGBTQ justice organizations, the Palestinian solidarity movement, the labor movement, and more. She owes a great deal to patient mentors who helped her on her journey into self-reflexive allyship. She took those lessons and commitments from the streets with her as she moved onto graduate school.

At the University of Minnesota, Dr. Tiffe studied Communication from a critical cultural studies perspective, and minored in Feminist and Critical Sexuality Studies. Throughout her time in the program, she worked on a variety of academic projects, including a study of transgender media representation that was published in *Liminalities: A Journal of Performance Studies*. Her dissertation, *Queering the Union Movement: The Politics and Potential LGBTQ/Labor Alliances*, is a critical qualitative study that examines the relationship between the US labor movement and LGBT workers. The project interrogates questions related to the political potential of labor organizations and gay rights organizations. She has presented work from the project at multiple conferences. The final chapter of the dissertation argues that the labor movement can better advocate for poor and working class people, especially poor and working class queer people and people of color, by divesting from police and prison unions. This chapter was published in 2015 in *QED: A Journal of GLBT Worldmaking*.

Dr. Tiffe continued her activist work in Minnesota, as an organizer for the graduate student union, as well as other local activist organizations, including the Free CeCe committee and the Occupy Homes movement. In 2012, Dr. Tiffe also became a certified yoga teacher and founded a yoga program at the Hennepin County Detention Center where she taught weekly yoga classes to incarcerated juvenile boys.

Dr. Tiffe received her PhD in 2013, and the same year began working as a Visiting Assistant Professor at Merrimack College outside of Boston. Since earning her PhD, she has maintained an active record of scholarship and publication, including an auto-ethnography published in *Rhizomes: Cultural Studies in Emerging Knowledge*, examining how working-class positionality in the academy changes relationships to academic labor. She was also a contributing author of *Queer Praxis: Questions for LGBTQ Worldmaking* (2015), a book that interrogates the project of building queer communities through queer politics. Most recently, she published a co-authored paper on women in podcasting, published in *Feminist Media Studies* (2017).

In Boston, Dr. Tiffe continues her life as a scholar-activist, committed to teaching, research, organizing, and public-scholarship. She is a regular volunteer for Black & Pink, an LGBTQ prison advocacy organization, and for a social justice yoga organization called Hands to Heart Center, which brings free yoga to underserved communities.

Additionally, Dr. Tiffe co-hosts a weekly podcast called *Feminist Killjoys*, PhD. She and her co-host, Dr. Melody Hoffmann, use the podcast to discuss current events in pop culture and politics, and also do interviews with academics and activists. Dr. Tiffe has also been featured on several radio programs, including NPR's *On Point* and CBC's *The Current*, and has written for several online publications including *The Daily Dot*, *The Huffington Post*, and more.

She continues to move through her work and through the world with Paulo Friere's words as her guide:
"The educator has the duty of not being neutral."



Schedule—Friday, November 3, 2017

6:00 - 10:00 p.m.

The Gallery at The Greenly Center, 55 East Main St., Bloomsburg

Art Exhibition—Opening Reception

Join us for the opening reception of our third annual art exhibition. Refreshments will be served.

6:00 - 10:00 p.m.

The Greenly Center, 55 East Main St., Bloomsburg

Game night!

Join your fellow conference attendees for a fun evening of games and entertainment. Snacks, bingo machine, cards, and other games will be available.

7:30 p.m.

Alvina Krause Theatre, 226 Center St., Bloomsburg

The Arsonists

A moral play without a moral. By Max Frisch in a new translation by Alistair Beaton.

Please note, this event is not included in conference registration. Tickets \$6 adults, \$4 seniors/non-BU students, free for BU students with ID. Any remaining seats will be available at the door starting one hour before curtain time. Cash only please.

Schedule—Saturday, November 4, 2017

8:00 - 9:00 a.m.

Registration & Continental Breakfast — McCormick Center Lobby

9:00 - 9:30 a.m.

McCormick Center 1303

Welcome and Opening Remarks

Shavonne Shorter, Conference Chair, Assistant Professor of Communication Studies, Bloomsburg University, sshorter@bloomu.edu

Mark Usry, LGBTQA Commission Chair, Associate Professor of Business Law, Bloomsburg University, musry@bloomu.edu

James Brown, Dean of the College of Liberal Arts, Bloomsburg University

Mark Bauman, Interim Vice Provost & Dean of Undergraduate Studies, Bloomsburg University

Karen M. Whitney, Interim Chancellor of Pennsylvania's State System of Higher Education

Counseling Resources

We realize that some topics discussed during the conference may be emotional. Counseling Resources are available. Stop by the registration/info desk or email MidAtlanticLGBTQA@bloomu.edu to speak with someone. All conversations are private and confidential.

STD Testing

STD Testing provided by Caring Communities is available in McCormick Center 2223 on Saturday from 8-11 & 1:30-4



9:45 AM - 10:45 AM — Session 1

ABC's of LGBT

Session 1B — McCormick Center 1316

Participants who are new and experienced with terminology within the community will be given a safe and inclusive space to learn and expand their knowledge of terminology, how terminology impacts individuals, and learn why they should always continue to expand their knowledge of LGBTQA terminology that is ever changing.

Em N Moglia, Student, Bloomsburg University, enm73897@huskies.bloomu.edu

Malik Muhammad, Coordinator of Sexual and Gender Diversity, Bloomsburg University, amuhammad@bloomu.edu

LGBTQ+ Communication: Why words matter.

Session 1C — McCormick Center 2303

This workshop will focus on the dynamics of communication in LGBTQ+ spaces; and how important they are, as language is constantly fluctuating. We will challenge individuals to question how they communicate with others, why messages are lost, and how you can navigate arguments. This workshop will encompass videos, hard copies of takeaway communication tactics, as well as new relationships and perspectives that are essential to broadening our knowledge as youth. We will examine why words don't mean things, people mean things; how to "understand" individuals, and the importance of listening to understand, not to reply. By the end of the workshop you'll be able to discern the ways that communication is more of a mindset than a practice.

Cecily Thomas, Vice President of Madison Equality, James Madison University, thoma2ci@dukes.jmu.edu

Getting Comfortable with being Uncomfortable: A Courageous Conversation on Structural Inequality in America

Session 1D — McCormick Center 2314

Conversations revolving around structural inequality have become a part of our daily rhetoric due to the real time exposure of various oppressive transgressions. Frequent occurrences of conversations on inclusivity have become normalized and are plentiful, yet many individuals remain resistant to opportunities that increase cultural competence. Delivery routinely ignites the fear that coincides with engagement in factual conversations about structural inequality; in an effort to combat resistance and fear, participants will play Factuality, a crash course that unpacks various aspects of structural inequality in America that impacts LGBTQ, gender, and race experiences.

Natalie Gillard, Assistant Vice President, Multicultural Experience, Stevenson University, ngillard@stevenson.edu

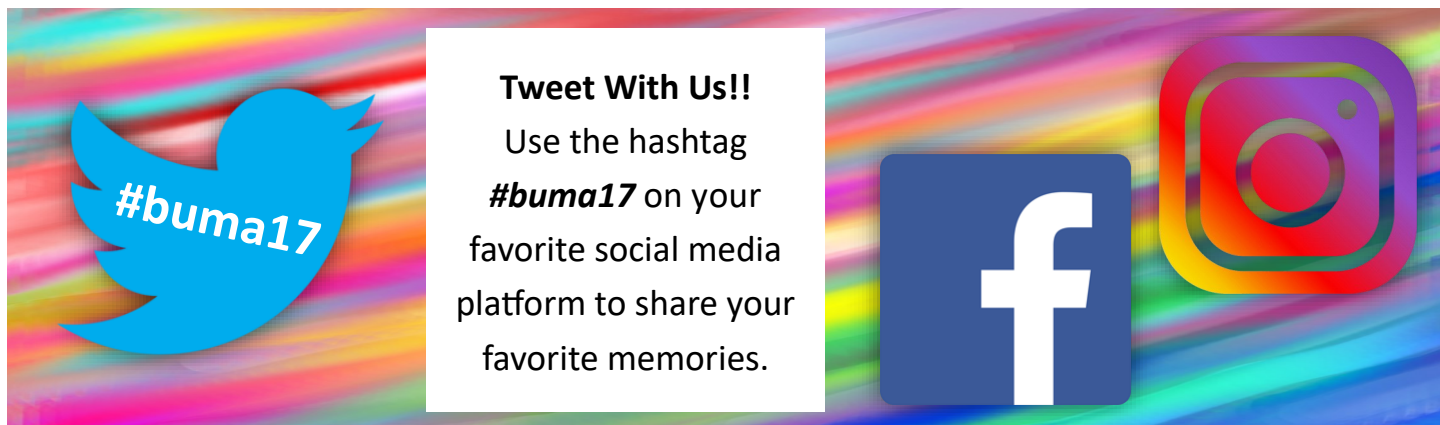
11:00 a.m. - 12:15 p.m.

Ice Breaker — Kehr Union Building 345

Building Community Activities

Ready to get to know your fellow conference participants?! Join us for a slew of fun and games as we get acquainted with everyone here at the Conference!

Malik Muhammad, Coordinator of Sexual and Gender Diversity, Bloomsburg University, amuhammad@bloomu.edu



12:15 - 1:30 p.m.

Lunch — Scranton Commons Dining Hall

Use the ticket included with your name badge to enter the dining area.

Please note, if you leave the dining area, reentry is prohibited.

1:45 PM - 2:45 PM — Session 2

Asexuality 101: The Division Between Communities and How To Reconnect

Session 2A — McCormick Center 1303

This roundtable will examine the issue of division within the asexual community as well as division from the LGBTQ+ community with special attention focusing on reconnecting those within the asexual community to others included in the LGBTQ+ communities, creating a higher understanding for each other. We will begin by exploring the basics of asexuality briefly followed by examining and discussing how personal and community views of asexuality have shifted, leading to more people openly identifying as asexual while still holding previous, and sometimes misunderstood connections, about asexuality.

Em Adam, Student, Moravian College

Syd Brannen, Student, West Chester University

Lorraine Bracker, Student, California University of Pennsylvania

Isley Smith, Student, California University of Pennsylvania

Structuring Effective Student Led LGBTQ+ Outreach

Session 2B — McCormick Center 1316

Learn how to design and manage outreach programs on campus without the leadership of a campus department or office. Join undergraduate co-facilitators Gracie Wheelles and Rain Garant in a discussion surrounding the needs of your campus when creating and implementing student centered LGBTQ+ educational panels across all types of classrooms and campus spaces. They will also discuss ways to transition from student org to campus office centered sponsorship and integrate successful faculty and graduate level support. The end of the session will include a brief demonstration of the panels in place on Wheelles and Garant's campus.

Rain Chris Garant, Educational Coordinator, LGBTQ+ & Ally Education Program, James Madison University, garantrc@jmu.edu

Gracie Wheelles, Educational Coordinator, Madison Equality, James Madison University, wheelegt@dukes.jmu.edu

Come Together, Go in Peace: An Inclusive Christian Worship Service

Session 2C — McCormick Center 2303

ReLIGion has caused deep divisions at reunions, and great pain to those in the LGBTQ community. Can we reclaim faith as a powerful way to reconnect people just as LiGaments join our bones together? We believe in a still-speaking God and in the worth and dignity of all persons just as they were created, everyone a beloved child of God. Please join us as we come together to worship God, source of our strength and peace, share in Holy Communion where the table is open to all, and leave empowered to work together for a more just world.

Darcy Decker, Member, Open and Affirming Journey Team, Shiloh United Church of Christ, Danville, PA

Rev Mary Schmotzer, Pastor, Shiloh United Church of Christ, Danville, PA, mainoffice@shilohucc.org

Kay Shulski, Music Director, Shiloh United Church of Christ, Danville, PA

Rashko Nutaitis, Organist, Shiloh United Church of Christ, Danville, PA

The Elephant in the Dorm Room: A Discussion on the Issues, Possibilities, and Realities of Gender Inclusive Housing

Session 2D — McCormick Center 2314

With the rise of acceptance for gender variant expressions, more institutions of higher education are considering ways to make housing policies more gender inclusive. Join in this roundtable discussion with students and faculty about how introducing gender inclusive housing has impacted their university for transgender students and others in the LGBTQ+ community inside residence halls, in the classroom, and around campus.

Abraham Rexrode, (he/him), Student, Centenary University, rexrodea@centenaryuniversity.edu

Savannah Murphy, (she/her), Student, Centenary University, murphys05@centenaryuniversity.edu

Jonathen Muñoz, (he/him), Student, Centenary University, munozj01@centenaryuniversity.edu

Joseph Cooper, (he/him), Residence Life Complex Director, Centenary University, cooperj03@centenaryuniversity.edu

3:00 PM - 4:00 PM — Session 3

Queer 101

Session 3B — McCormick Center 1316

This presentation explores the history of queer theory and the relationship between queer theory and social justice activism. Through a detailing of this history, I argue that theory and activism are best understood as a symbiotic relationship.

Timothy Oleksiak, Assistant Professor, University of Massachusetts Boston

Gender Outlaws in the Bible

Session 3C — McCormick Center 2303

Through performance and interactive discussion Peterson Toscano reveals stories of gender and sexual minorities in the Bible. Entertaining, informative, and suitable for people secular and religious, Toscano's "performance lecture" deepens well-known (and lesser-known) Bible stories and presents an array of Bible characters with an array of genders. Who knew there are gender non-binary and gender outlaws in the Bible who saved the day? Peterson literally morphs before your eyes and unearths people you had no idea were in the Bible. No previous Bible knowledge required.

Peterson Toscano, Theatrical Performance Activist, Susquehanna University, peterson@petersontoscano.com

They're Already Here and More Are on the Way: Generation Z

Session 3D — McCormick Center 2314

Generation Z (20 years old and younger) is the most diverse and most accepting of diversity of any previous generation. This workshop will focus on the cultural tendencies/characteristics of Generation Z, as well as strategies for successfully working with them. Special emphasis will be given to Generation Z's respect for LGBTQA issues.

Jeffrey Brauer, Full Professor of Social Sciences, Keystone College, jeff.brauer@keystone.edu

4:00 - 5:00 p.m.

Free Time

Use this time however you like. Stop by your hotel to freshen up for the evening, visit the information tables in the lobby, chill in our relaxation areas, or take a walking tour of Campus and Town.

5:00 p.m.

Tenth Anniversary Banquet — Kehr Union Ballroom

Join us for a banquet to celebrate the *Tenth Annual* Mid-Atlantic LGBTQA Conference!

6:00 p.m.

Keynote Address — Kehr Union Ballroom

(Re)Turns to Resistance

This summer we witnessed the streets fill with swastikas and confederate flags. It seemed, to the surprise of many, that shameful parts of our past were, under the current administration, emboldened to resurface. And yet, many others were less surprised—those whose lives are deemed less-than because of race, sexuality, religion, ability, and other marginalized identities, know far too well that hateful ideologies have been alive and well since the colonization of this nation. As queer people whose lives meet at the intersections of race, religion, ability, citizenship, and gender, our existence is always already a temporal result of the legacy of revolutionaries that came before us. We are the children of militant Stonewall rioters, of slave rebellion leaders, of indigenous land protectors, of concentration camp survivors. We are nothing if we are not fighters.

How might we utilize these truths—that neither temporality nor identity is static, that our history is no more past than our modalities are fixed—as liberatory paradigms for social change? How might we better organize with the acknowledgement that white nationalism, anti-gay and anti-trans hate crimes, anti-immigrant rhetorics, (etc) are not “back,” but rather that they have never gone away?

In this keynote, I will ask the audience to join me in thinking through how our past --rich with the narratives of resistance--might help guide and inform how we show up as social justice educators, researchers, activists, and organizers. In addition, I will ask us to consider what new-worldmaking and imagining we have done in our recent movements that could provide constructive remedies to past weaknesses.

Dr. Raechel Tiffe, Instructor of Women's & Gender Studies, Merrimack College, raecheltiffe@gmail.com

7:00 - 10:00 p.m.

Decades Dance Party! — Kehr Union Ballroom

Dance hosted by the Bloomsburg University Equality Alliance. Enjoy dance music and a variety of desserts!

7:30 p.m.

Alvina Krause Theatre, 226 Center St., Bloomsburg

The Arsonists

A moral play without a moral. By Max Frisch in a new translation by Alistair Beaton.

Please note, this event is not included in conference registration. Tickets \$6 adults, \$4 seniors/non-BU students, free for BU students with ID. Any remaining seats will be available at the door starting one hour before curtain time. Cash only please.

7:30 p.m.

Haas Center for the Arts, Mitrani Hall

The Preservation Hall Legacy Quintet

With the Soul Queen of New Orleans Miss Irma Thomas and special guest appearance by The Blind Boys of Alabama.

Please note, this event is not included in conference registration. Tickets \$30 adults, \$15 children & BU students with ID.

Schedule—Sunday, November 5, 2017

8:30 - 9:15 a.m.

McCormick Center Lobby

Continental Breakfast

9:30 AM - 10:30 AM — Session 4

Power, Privilege, and Polar Bears: Queer Responses to Climate Change

Session 4A — McCormick Center 1303

What issue touches the things we are most passionate about: coffee, pets, and LGBTQ issues? Surprise! Global Warming. It's not just about polar bears and grandchildren; it's also about social justice issues affecting people of color, LGBTQ youth and adults, immigrants, and more. Queer comic and human rights activist Peterson Toscano reveals how LGBTQ people are directly affected by climate change and how we are desperately needed to develop bold, creative, and new approaches to the biggest problem in the world. Through interactive discussion, exercises, and thought experiments better understand how you are needed on this new earth.

Peterson Toscano, Theatrical Performance Activist, Susquehanna University, petersontoscano.com

Aging Deaf Lesbians: A Study of Stigmatization, Marginalization, Resistance and Resilience

Session 4B — McCormick Center 1316

I will explore Deaf lesbians' experiences in the United States from 1945 to today. Before specific civil rights movement milestones affecting Deaf lesbians were achieved such as second wave women's movement, the publication of American Sign Language in the dictionary, the recognition of ASL as a legitimate language, and the activism surrounding Stonewall. Because these experiences have been neglected, this presentation aims to bring their narratives to light.

Bridget Klein, Professor, Bloomsburg University, bklein@bloomu.edu

Spoken Word: A Unifying, Intersectional Experience

Session 4C — McCormick Center 2303

The session will bring together spoken word performance and explanation/discussion of academic themes and personal accounts in order to emphasize the importance and relevancy of spoken word in the LGBT community. Through this presentation and performance, attendees will be engaged and will leave with an understanding of how Spoken Word culture evokes unity, understanding, and empowerment.

Dre Ceja, Student, California University of Pennsylvania

How to Train Your(self to be an) Ally

Session 4D — McCormick Center 2314

Have you ever witnessed really problematic behavior by someone claiming to be an ally? Have you ever done something harmful to someone you were trying to be an ally to? In this session we will collaboratively discuss what it means to be an ally to a marginalized community, and reflect on what we can do to practice effective allyship in our own lives.

Taryn Urban, Student, Bucknell University, thu001@bucknell.edu

Morgan Muller, Student, Bucknell University, mrm026@bucknell.edu

10:45 AM - 11:45 AM — Session 5

Praxis for Resistant (Re)Turns

Session 5A — McCormick Center 1303

In this talk-back session, Raechel Tiffe will expand on some of the ideas from her keynote speech, and ask audience members to engage in a conversation about what a praxis for resistance might look like. Audience members will be able to engage Dr. Raechel Tiffe in questions and also share their own valuable insights, research, and ideas. Ideally this will be a relatively informal session for a robust collective conversation.

Dr. Raechel Tiffe, Instructor of Women's & Gender Studies, Merrimack College, raecheltiffe@gmail.com

Identifying Shortcomings in National SGM Health Research Funding

Session 5B — McCormick Center 1316

The National Institutes of Health (NIH) distributes over \$22 billion to more than 75,000 projects every year, yet only a tiny fraction of its overall portfolio is devoted to sexual and gender minority (SGM) health. Of money awarded to SGM studies, the vast majority has been devoted to HIV/AIDS. Considering that SGM populations experience disproportionately negative health outcomes, it is important that researchers identify causes and effective interventions for a greater diversity of topics. This session will explore NIH, examine the studies that have been funded for SGM health, and evaluate the institutes related to their funding trends.

Caroline Voyles, DrPH Student, Drexel University, cvoyles@drexel.edu

"Straight" Queers: Balancing Straight Privilege and Erasure of Multisexuality

Session 5C — McCormick Center 2303

This program will explore the erasures of multisexuality, "dating straight," and femme individuals within the LGBTQA community while recognizing and addressing the historical and present privilege of passing as straight. The focus of this presentation addresses the feeling that some community members have about not being queer enough and having to prove themselves to the queer community. This presentation aims to encourage conversation about advocating for all types of queer. We will speak through our own experiences and those experiences that we have listened to and read.

Sara Graper, Student Affairs Graduate Student, Slippery Rock University, smg1016@sru.edu

How We Win: Ensuring Equity and Inclusion for LGBTQ Pennsylvanians

Session 5D — McCormick Center 2314

Pennsylvania remains a difficult place for many people to be openly LGBTQ under the law. Our state legislature has adopted no law currently in effect to ban anti-LGBTQ discrimination or violence in our schools and communities. To demand full equality under local and state laws, we must be strategic in all our efforts. This session will provide you with a clear understanding of LGBTQ civil rights in Pennsylvania - our histories, present, and future agendas from Harrisburg. Through collaborative work, you will learn important tools you can use back in your communities to advance critical social and economic justice work.

Jason Landau Goodman, Executive Director, Pennsylvania Youth Congress / Law Student at the University of Pittsburgh, jgoodman@payouthcongress.org

Tara Stark, Policy Associate, Pennsylvania Youth Congress, tstark@payouthcongress.org

12:00 PM - 1:00 PM — Session 6

Queering the Archive on College Campuses

Session 6B — McCormick Center 1316

When students look to research their LGBTQ ancestors, university libraries often have few materials because LGBTQ histories are regularly destroyed or devalued. In this session, participants will learn how to reverse this erasure by creating their school's very own LGBTQ oral history collection, even on a small budget. Students are the interviewers and benefit from both the means and the ends of the project. Session participants will listen to audio clips and learn best practices drawn from projects the facilitators developed: the Vassar College LGBTQ Oral History Project and the Princeton LGBTQIA Oral History Project.

Judy Jarvis, Director, LGBT Center, Princeton University, jj20@princeton.edu

Teaching the Singular They

Demonstration of a set of teaching resources that advocates for the use of the singular they in writing. While the pronoun they is commonly used in spoken English to refer to a single person of an unknown gender, rules for written English have historically reinforced either patriarchy or heteronormativity. The YouTube video and supporting resources presented in this session seek to provide teachers with tools for instructing students in the use of a pronoun that includes all genders: the singular they.

Chris Rozelle, Student, Bloomsburg University

Queering School Policy 249: Anti-Bullying Issues in Local PA Schools

In this individual academic presentation I will argue the need for more inclusive anti-bullying policies in schools and the importance of forming policies that include the sexual orientation, gender identity, and/or gender expression (SOGIE) framework. I will also demonstrate and take feedback on an inclusive anti-bullying policy that I created to demonstrate my research on anti-bullying policies as well as my personal idea of an inclusive policy that is better suited for 21st century students.

Paxton Beck, Student, Bloomsburg University, phb75692@huskies.bloomu.edu

Advancing Trans Student Rights**Session 6D — McCormick Center 2314**

Transgender and gender expansive students have unique and often challenging experiences in affirming their gender under the law. Adopting effective policies, as well as ensuring their successful implementation, can be crucial for trans students and youth to have positive experiences in their communities. This session will educate participants on the local, state, and federal laws and school policies that have direct impact on trans students. Participants will gain valuable skills to use in their home communities in the push toward equity and inclusion for trans people. We will also examine several case studies of anti-trans discrimination involving Pennsylvania students..

Jason Landau Goodman, Executive Director, The Pennsylvania Youth Congress / Law Student at the University of Pittsburgh, jgoodman@payouthcongress.org

Tara Stark, Policy Associate, Pennsylvania Youth Congress, tstark@payouthcongress.org

1:00 p.m.**Town Hall Meeting, Open Forum, and Closing Remarks— McCormick Center 1303**

Conference attendees are invited to offer their thoughts and opinions during this interactive conversation. Topics will be participant driven and might range from discussions about issues with which individuals or campuses are coping, questions about current and future programs, or responses to sessions attended at the conference. The floor will be open for discussion and moderated by members of the Conference Committee.

Malik Muhammad, Coordinator of Sexual & Gender Diversity, Bloomsburg University, amuhammad@bloomu.edu

Shavonne Shorter, Conference Chair, Assistant Professor of Communication Studies, Bloomsburg University, sshorter@bloomu.edu

Dave Kube, 2018 Conference Chair, Assistant Professor of Photography, Bloomsburg University, dkube@bloomu.edu

Asa Kelley, Conference Operations Coordinator, Video Production Specialist, Bloomsburg University, akelley@bloomu.edu

3:00 p.m.**Alvina Krause Theatre, 226 Center St., Bloomsburg****The Arsonists**

A moral play without a moral. By Max Frisch in a new translation by Alistair Beaton.

Please note, this event is not included in conference registration. Tickets \$6 adults, \$4 seniors/non-BU students, free for BU students with ID. Any remaining seats will be available at the door starting one hour before curtain time. Cash only please.

Thank you for attending the

bloomu.edu/LGBTQA/Conference/Survey or scan here:

Attendees who complete the survey before November 30 will be entered in a drawing for a free pass to the 2018 conference!



Notes:

This image shows a single sheet of white paper with horizontal ruling lines. The lines are evenly spaced and run across the width of the page. There are no margins, text, or other markings on the paper.

This image shows a single sheet of white paper with horizontal ruling lines. The lines are evenly spaced and run across the width of the page. There are no margins, text, or other markings on the paper.

2017 Mid-Atlantic LGBTQA Conference Planning Committee

Shavonne Shorter, Conference Chair
Dave Kube, Conference Vice-Chair & Art Exhibition Curator
Asa Kelley, Conference Operations Coordinator
Malik Muhammad, Coordinator of Sexual & Gender Diversity
Monica Johnson, Staff Coordinator
Beth Brennan, Treasurer
Mark Usry, Founder
Gretchen Osterman
Craig Young

**The Committee would like to thank the following
for their valuable contributions to the Conference:**

Bloomsburg University
Bashar Hanna, President
Robert Wislock, Office of Social Equity & Accommodative Services
James Brown, College of Liberal Arts
LGBTQA Commission
Equality Alliance
LGBTQA Resource Center
College of Liberal Arts
Department of Art & Art History
Christy Stine, Facilities Scheduling
Kristi Getty, Kehr Union Scheduling
Ken Dunlap, Kehr Union Media Services
ARAMARK at Bloomsburg University
Bloomsburg University Police



Thanks to all of the institutions represented at this year's conference!

Alderson Broaddus University
Bloomsburg University
Bucknell University
California University of Pennsylvania
Caring Communities
Centenary University
Cuyahoga Community College
Drexel University
East Stroudsburg University
Edinboro University
Geisinger Medical Center
Harvard T.H. Chan School of Public Health
Indiana University of Pennsylvania

James Madison University
Keystone College
Lock Haven University
Lorain County Community College
Lycoming College
Mansfield University
Merrimack College
Misericordia University
Moravian College
Nazareth College
Northampton Community College
Pennsylvania Youth Congress

Princeton University
Shiloh United Church of Christ
Slippery Rock University
St. Francis College, Brooklyn
Stevenson University
Susquehanna University
Temple University
The Women's Center, Inc.
Thornton
University of Massachusetts Boston
University of Pittsburgh
University of Virginia
West Chester University

Reunion Exhibition

Reunions illicit numerous emotions and get us thinking about the connections we've made or the connections we've lost. When thinking about all the various thoughts and emotions that come from reunions, four distinct themes seemed to be present in the work selected for this exhibition.

Reunions are always about connections. Whether those connections are met with trepidation or joy, there is always a bringing together of people whose lives and past intertwine with one another. Kris Sanford's *Box Camera* and *Folding Chairs* emphasize a joining of two people. The embrace and touching suggests an intimate and happy connection between these figures. Reza Esapour's image leaves an openness of the space that finds these figures connected and alone within a vast and empty world. Mark S. Zimmerman's *Phone Booth* sculpture represents a crude method of conversing with someone separated and divided. Despite the division, the string is always able to connect the two tin cans. Qin Zang's *We Are All Brothers and Sisters* finds our lives intertwined with one another as each figure overlaps and helps to form a more opaque character.

The stories that get told and shared form the history and past we share with familiars. Tessa Sutton's *After the Fire* finds figures seemingly lost and engaged with one another as they try to grapple with an event. Similarly, Kathryn Jill Johnson's *A Healthy Distrust* seems to preclude an event that mimics a death of sorts as the figure and bird seem lifeless with a looming larger figure. Kerry Kolenut's *Swimming Pools* image celebrates a memory with a group of people whose connection is not as easily forgotten even if the details of the memories get washed away.

As these stories get told, we are reminded of complicated emotions that interweave each reunion. Similar to a voodoo doll or acupuncture, JP Terlizzi's *Pins* shows the complexity in which we may view another person. The photograph of an older photograph also emphasizes time's constant pull forward. Many other artists bring in complication in abstract forms. Kate Walker, Jackie Jiang, Taehee Kim, Vera Genovese, and Jessie Georges all create work and imagery with lines and forms that overlap and intersect each other. They show us that reunions are never a simple act, but one of perpetual interconnectedness and complications.

Reunions are inherently about separation because the coming together implies a distance before and sometimes after. In abstract form, Evin Dubois' *Cute Without the E* consists of dispersed sculptural pieces reflecting a similar identity but separate and divided from each other. Kirby Miles *Skinned* works also implies a disconnect like a river or barrier that keeps the distance between the top and bottom forms. Janene Whitesell and Judy Duggan-McCormack both emphasize the ultimate separate through death. One of a tomb stone and one a reference to a burial site, both show our unbroken connections to the ones we love and the nature we can never escape.

Dave Kube
Curator and Juror



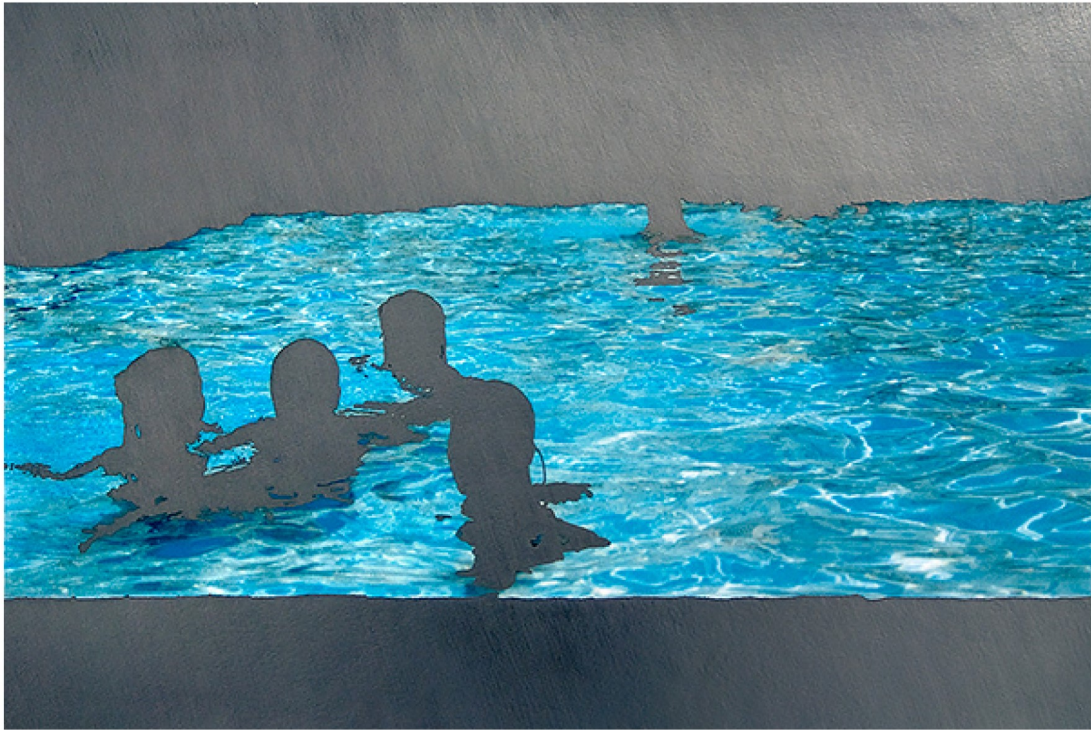
Tessa Sutton – *After the Fire*



Qin Zhang - *We Are All Brothers and Sisters*



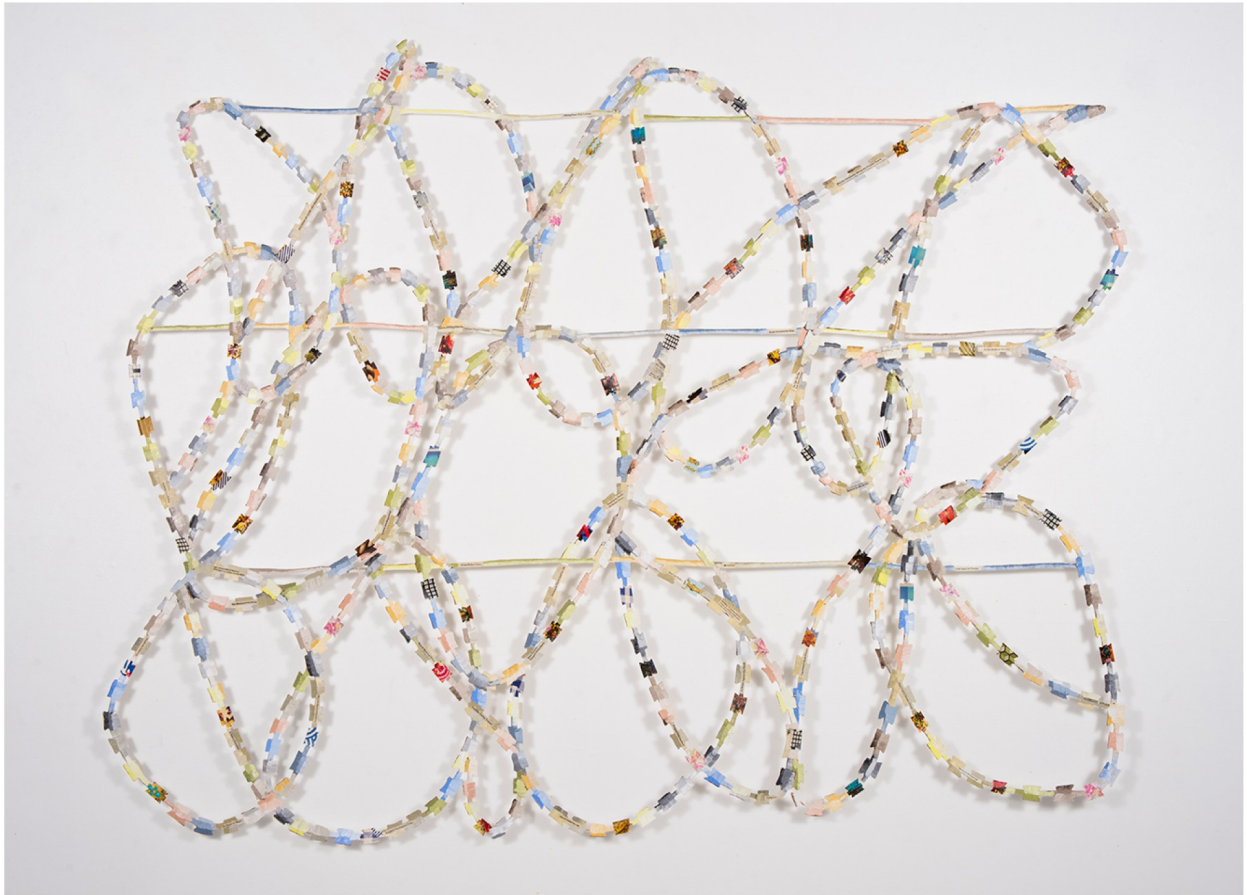
JP Terlizzi – *Pins*



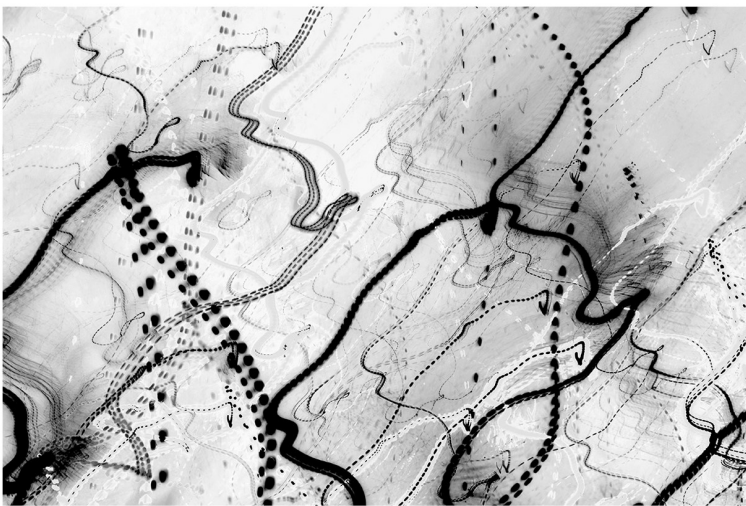
Kerry Kolenut - *Swimming Pools*



Evin Dubois - *Cute Without the E*



Kate Walker- *Trawling*



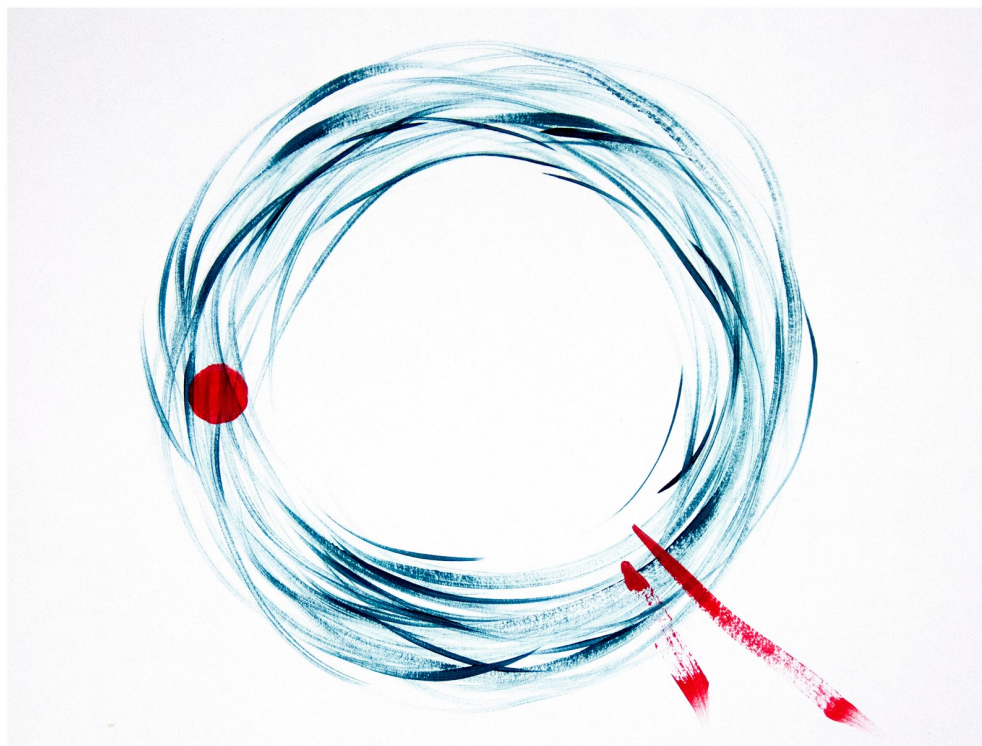
Vera Genovese- *Multiple Scream*



Taehee Kim - *New Form of Life*



Jessie Georges - *Precious Memories*



Jackie Jiang - *Apart and Reunite #1*



Kirby Miles - *Skinned 53*



Judy Duggan-McCormack- *Look Behind you, and Remember That You Are Human*



Reza Esapour



Janene Whitesell – *Charnel Ground*

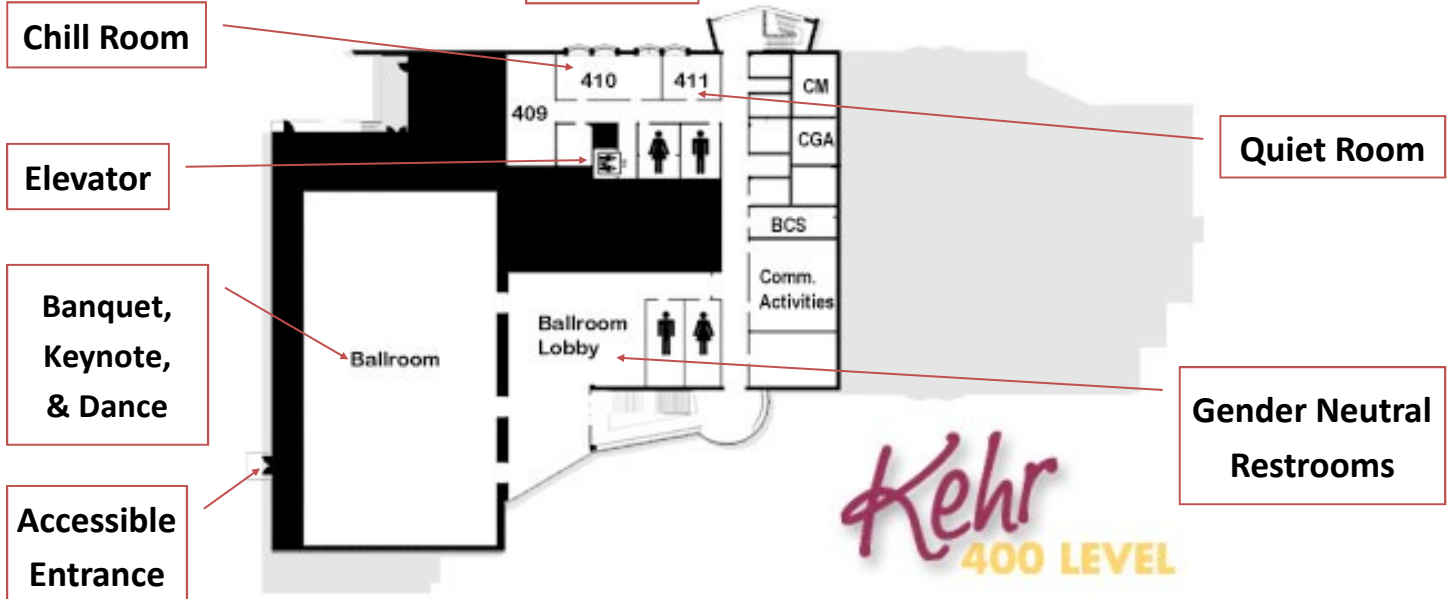
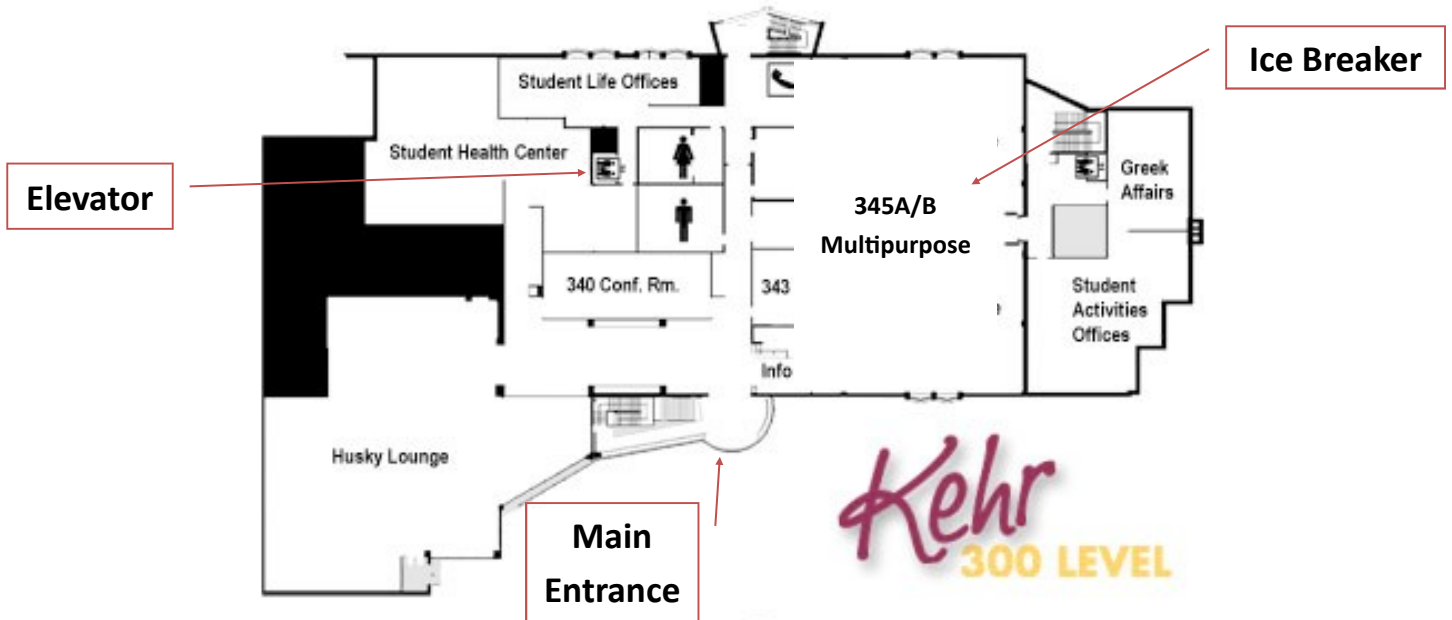
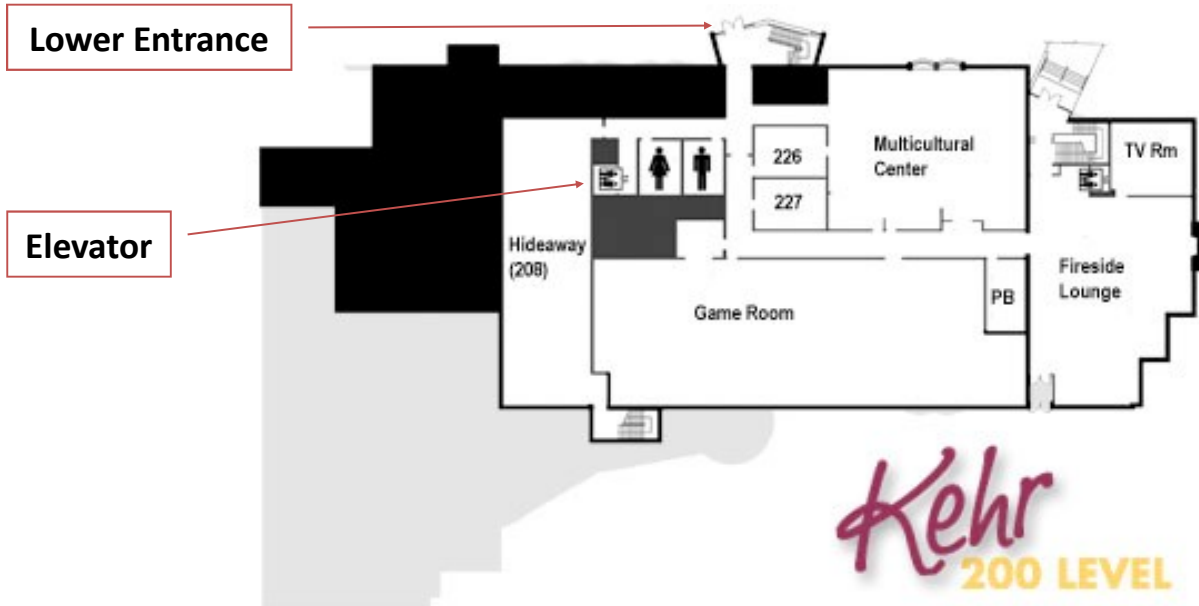


Mark S. Zimmerman – *Phone Booth*

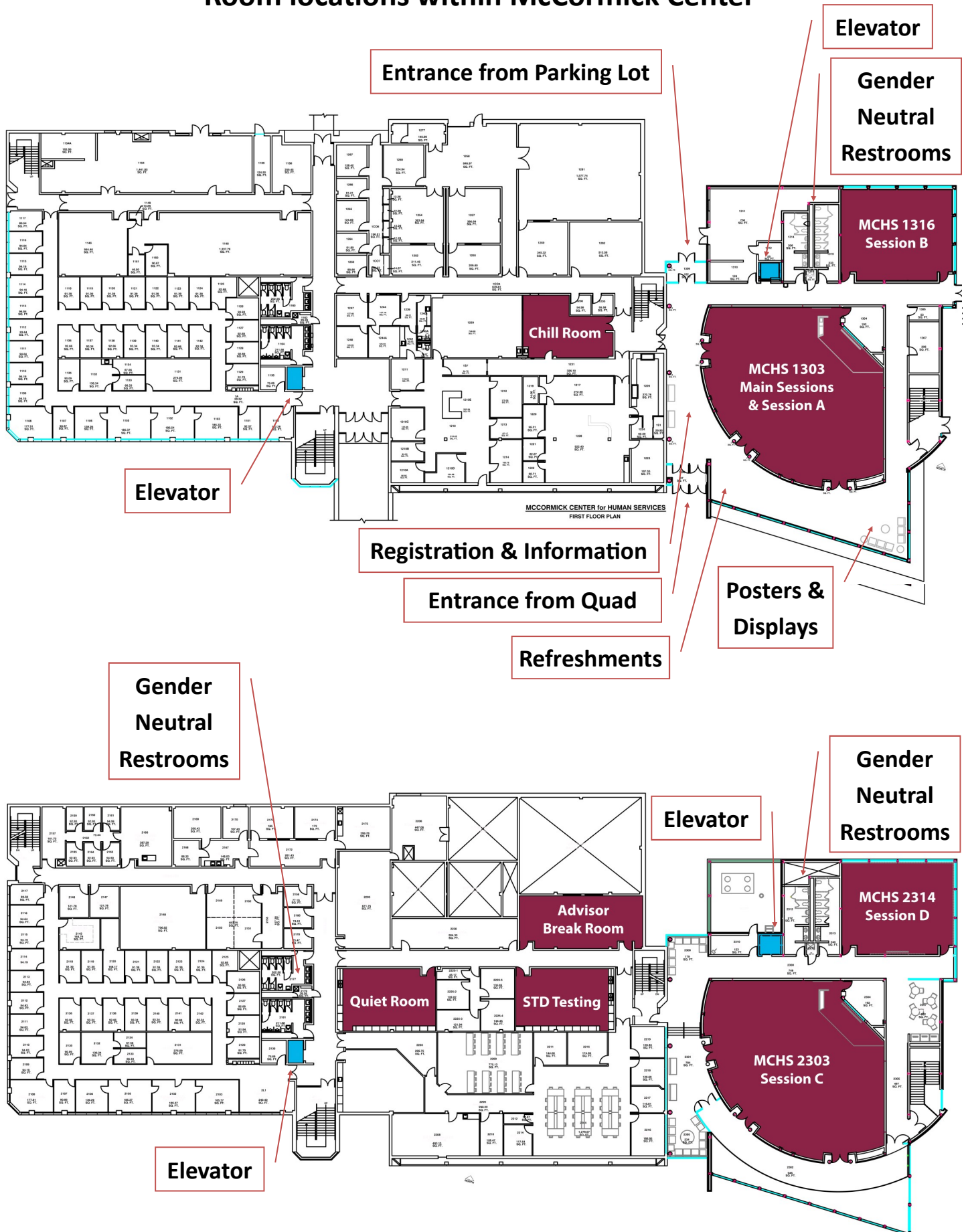


Kathryn Jill Johnson – *A Healthy Distrust*

Room locations within Kehr Union



Room locations within McCormick Center



Internet Access

For your convenience, wireless internet access is available throughout campus. On your Wi-Fi capable device, connect to the "bloomu" network. If your device does not automatically display the "Welcome to the Bloomsburg University Network" page, open a web browser and navigate to a non-secure web page (i.e. <http://cnn.com>, <http://weather.com>, etc.), click the "Guest Login" button and enter the guest account credentials below. Once you authenticate, you will be able to browse the Internet.

Username: lgbtqawifi — Password: november

